

MOJITO DELLA BOSCAGLIA

(M) LOI LO2486115

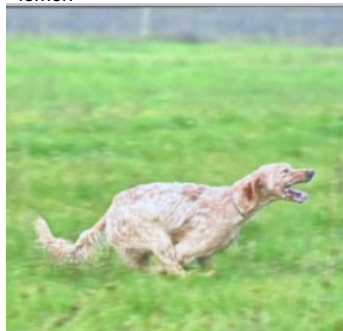
[fiche affixe](#)

hosted by setter-anglais.fr

NATAN 2012-10-03 (M) LOI
LO12157969 (CH IT GQ, Camp. TR. (CH
GQ), CH(IT) - bluebelton



Père
TURNER W/ DELL'AD MONTES
2019-08-16 (M)
LOI LO19181174
- lemon



VANDERGOES DELL'AD MONTES
2016-06-15 (F) LOI LO16133594 -
bluebelton



KAPO' 2003-11-10 (M) LOI
LO0439835 (CH GQ, CH IT) - bluebelton



QUATTA 2009-06-11 (F) LOI
LO1085288 - tricolore



NITRO DEL ZAGNIS 2011-04-26 (M)
LOI LO11106647 (CH IT GQ) -
bluebelton



LOLA 2012-07-05 (F) LOI
LO12129553 - tricolore



NERO 1997-03-29 (M)
LOI LO9817889 (Ch T, Ch
GQ) - bluebelton

KYBA 1998-01-01 (F) LOI
LO98118951 - lemon



ARTU DI ALDO DA SARNO
2006-01-02 (M) LOI
LO0666968 (Ch Italiano Trialler Int
Ripr) - tricolore

AMY 2002-08-10 (F) LOI LO02143515
- tricolore



HECTORE DEL ZAGNIS
2006-12-21 (M) LOI
LO0818749 (Ch. Ital. Lav., CH
GQ) - bluebelton












ADELE 2004-12-23 (F)
LOI LO09162774 -
bluebelton



ANTO 2002-01-07
(M) LOI
LO0246001 (Ch
Italie T, CH IT) -
bluebelton

POIS 2009-06-27 (F) LOI
LO09115893 - bluebelton

	<p><u>CUCCA'S RAYBAN</u> 2006-07-04 (M) LOI LO0740771 (Camp. Ital. Lav., Camp. Tr. (CH GQ)) - liver</p> 	<p><u>DODGE DEL TIRSO</u> 1998-02-14 (M) LOI LO9942918 (Ch IT-T, CHIB, Camp. Tr. (Ch GQ)) - bluebelton</p> 	<p><u>DERRYK</u> 1991-05-10 (M) LOI ST443351 (Ch GQ) - bluebelton</p> 
<p>Mère <u>TESSA DEL CODICE PIN</u> 2017-05-05 (F) LOI LO17111717 - bluebelton</p> 	<p><u>GINGER</u> 2008-03-10 (F) LOI LO0926481 - bluebelton</p>	<p><u>CUCCA'S ESTER</u> 2004-05-01 (F) LOI LO0477644 - liver</p> 	<p><u>RADENTIS NOMAR</u> 1998-03-22 (M) LOI LO98133353 ((CHGQ CHIT / CHIT.B)) - liver</p> 
		<p><u>TODAY</u> 2001-05-07 (M) LOI LO01146212 (Camp. Tr. (Ch GQ)) - bluebelton</p> 	<p><u>GIBELTARIK BESSIE</u> 2000-12-11 (F) LOI LO03116018 (Camp. Ripr.) - lemon</p>
		<p><u>FURIA</u> 2002-07-08 (F) LOI LO02138218 - bluebelton</p>	<p><u>PALAZIENSIS PEPE</u> 1997-07-03 (M) LOI LO99203608 - liver</p> 
			<p><u>BEA DEL ZAGNIS</u> 1999-07-01 (F) LOI LO0057831 - bluebelton</p>
			<p><u>GOLIA</u> 1992-09-03 (M) LOI ST476466 (Ch GQ) - bluebelton</p> 
			<p><u>ODA</u> 1999-04-16 (F) LOI LO99159014 - bluebelton</p>

Eleveur : davide ricciardi / Propriétaire : Stefano Marinoni
Estimation des points au pédigrée : 24

Taux de consanguinité (estimation) : 1.8 %

FURIA (6 X 3) : 0.003906
PALAZIENSIS PEPE (6,6 X 4) : 0.003906
DECOR LOTI (7,8,8,8 X 6,6,6,7,7,8,8,8,8,8,8,8,8) : 0.003784
NEGUS (6,8,8,8,8,8 X 7,7) : 0.001099
GOLIA (7,7 X 4) : 0.000977
OLAF (6 X 5) : 0.000977
ROYAL MOZART (8,8 X 5,5,7,7,8,8) : 0.000854
RADENTIS GIAN (7 X 6,7,7,8,8,8) : 0.000671
DUN DEL MESHIO (8,8 X 8,8,8,8,8,8,8,8) : 0.000458
FRANCINI'S LUCA (6 X 7) : 0.000244
OLAF DEI TRE PONTI (7,8 X 7) : 0.000183
ASOR (7,8 X 7) : 0.000183
DEM (7,8 X 7,8) : 0.000153
EMO DELLA TRAPPOLA (8 X 7,8) : 0.000061
NELSON DEL DIANELLA (7 X 8) : 0.000061
CAM DEL BINARIO (8 X 8) : 0.000031
ORFEO DELLA TRAPPOLA (8 X 8) : 0.000031



Note : les données ne sont pas garanties. Elles ont été entrées par les membres sans garantie d'exactitude.