

MILLER DI CROCEDOMINI

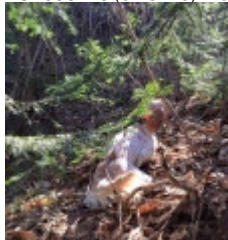
2024-05-20 (M) LOI LO24100043
Couleur : bianco nero marrone (tricolore)
[fiche affixe](#)



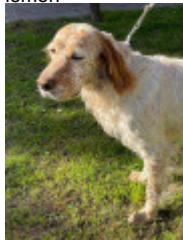
Père
ASSO
2022-04-23 (M)
LOI LO22104344
- lemon



TISSOT 2013-05-31 (M) LOI
LO1396775 (CH SPEC) - lemon



MELITA DI CROCEDOMINI
2017-03-05 (F) LOI LO1775430 -
lemon



GION DI CROCEDOMINI 2008-01-06
(M) LOI LO08103087 (Camp. Ripr. (CH)) -
lemon



ISLA dite MARILIN 2009-07-13 (F)
LOI LO09143879 - lemon



GION DI CROCEDOMINI 2008-01-06
(M) LOI LO08103087 (Camp. Ripr. (CH)) -
lemon



ISA DI CROCEDOMINI 2013-04-25
(F) LOI LO1385037 - tricolore



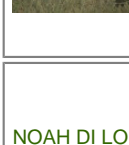
GIBELTARIK FLEMMING 2003-08-23
(M) LOI LO0790204 - lemon



EVA DI CROCEDOMINI
2004-05-01 (F) LOI
LO04101913 (Camp. Ital.
Lav.) - bianco nera



**LUPIN DELLO
ZORINO** 2005-09-10
(M) LOI LO0643055
(Camp. Ripr.) - tricolore



NOAH DI LORO PICENO 2008-08-09
(F) LOI LO091730 - lemon



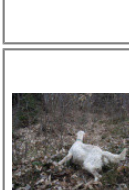
GIBELTARIK FLEMMING 2003-08-23
(M) LOI LO0790204 - lemon



EVA DI CROCEDOMINI
2004-05-01 (F) LOI
LO04101913 (Camp. Ital.
Lav.) - bianco nera




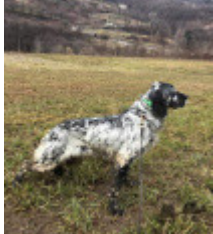


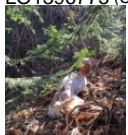









**HILL DI
CROCEDOMINI**
2008-03-20 (M) LOI
LO08106958 -
bluebelton



CHIARA 2011-06-26
(F) LOI LO11126600 -
lemon

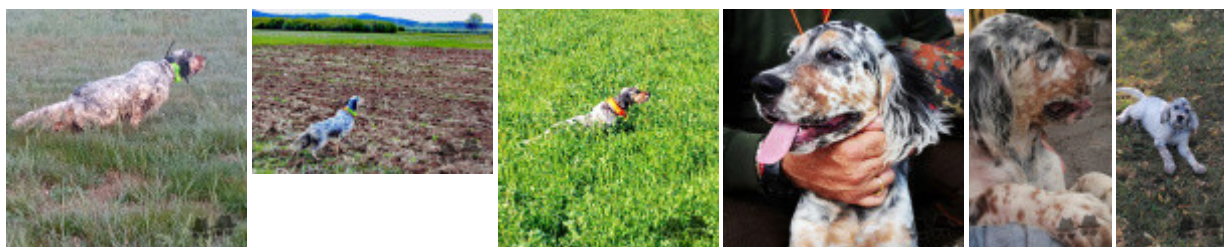


	<p><u>DENDABERRI PIRLO</u> 2013-07-01 (M) LOE 1747738 (Ch.IT) - bluebelton</p> 	<p><u>DENDABERRI JAI</u> 2007-03-12 (M) LOE 1704343 (TrCP, TrPR, TrBC) - bluebelton</p> 	<p><u>PALAZIENSIS RAMBO</u> 1999-11-01 (M) LOI LO0060896 (Ch W0F/ICH, IT T, ITF, Camp. Tr. (Ch GQ), CH(ES)T, CH(GB)T) - lemon</p> 
<p>Mère <u>ASHA DI CROCEDOMINI</u> 2020-12-05 (F) LOI LO2138926 - bluebelton</p>	<p><u>PERLA</u> 2015-09-04 (F) LOI LO15174267 - bluebelton</p> 	<p><u>BRUJA DEL ALTO PAS</u> 2009-04-02 (F) LOE 1871490 - bluebelton</p> 	<p><u>UMLANA DEL CAVALDROSSA</u> 2000-06-01 (F) LOI LO0336882 - bluebelton</p> 
		<p><u>TISSOT</u> 2013-05-31 (M) LOI LO1396775 (CH SPEC) - lemon</p> 	<p><u>GIBELTARIK CHESTER</u> 2001-11-05 (M) LOE KGC02202 (Ch GQ) - lemon</p> 
		<p><u>VELA DI CROCEDOMINI</u> 2011-04-13 (F) LOI LO1185322 - bluebelton</p> 	<p><u>IRA DE PIEDRALLADA</u> 2005-04-13 (F) LOE 1543735 - bluebelton</p> 
			<p><u>GION DI CROCEDOMINI</u> 2008-01-06 (M) LOI LO08103087 (Camp. Ripr. (CH)) - lemon</p> 
			<p><u>ISLA dite MARILIN</u> 2009-07-13 (F) LOI LO09143879 - lemon</p> 
			<p><u>GION DI CROCEDOMINI</u> 2008-01-06 (M) LOI LO08103087 (Camp. Ripr. (CH)) - lemon</p> 
			<p><u>ALICE DI CROCEDOMINI</u> 2004-03-05 (F) LOI LO04122672 - tricolore</p> 

Eleveur : GIORGI GIACOMO / Propriétaire : PAVANI MIRCO
Puce : 380260102697690
Estimation des points au pédigrée : 15

Taux de consanguinité (estimation) : 14.2 %

TISSOT (2 X 3) : 0.065582
GION DI CROCEDOMINI (3,3 X 4,4) : 0.047699
FIERO (6,6,6,7,8 X 5,7,7,7) : 0.004333
RADENTIS ERICA (5,5 X 5,6,6) : 0.004028
ALICE DI CROCEDOMINI (5 X 4) : 0.003906
BIBA DI CROCEDOMINI (6,6,6,7,8 X 5,7,7) : 0.003174
EVA DI CROCEDOMINI (4,4,6 X 5,5) : 0.001953
RADENTIS SBRANCO (6,6,7,7,7 X 6,7,7,7,8,8,8) : 0.001953
RADENTIS GIAN (8,8,8,8,8,8,8,8,8,8,8,8 X 7,7,8,8) : 0.001892
ARNQ (7,7,7,7,7,7,7,8,8 X 6,8,8,8,8,8,8) : 0.001678
LERRY (6,6,6,6 X 7,7,7) : 0.001221
LUPIN DELLO ZORINO (4,6 X 5) : 0.001053
FULL (5,5,6,7 X 6,6) : 0.001007
HEVELIN DI CROCEDOMINI (5,5,6,7 X 6,6) : 0.000977
CASSIA (6,6,6,7,8 X 7,7,7) : 0.000671
ODE DEL SOLE (6,6,7,7 X 6,7,7,8,8) : 0.000488
RADENTIS BORG (7,7,8,8,8 X 7,8,8,8,8) : 0.000214
CASMIR (7,7,7,7,8,8 X 8,8,8,8) : 0.000183
AKIRA DEL VARO (7,7,7,7,8,8 X 8,8,8,8) : 0.000183
ROVAL VIENNA (8,8,8,8,8,8 X 8) : 0.000153
KROL DI CROCEDOMINI (8,8 X 8) : 0.000061



Note : les données ne sont pas garanties. Elles ont été entrées par les membres sans garantie d'exactitude.