

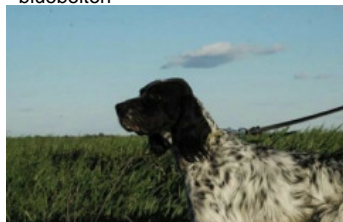
DENDABERRI RUENTE

2014-02-07 (M) LOE
Couleur : BLANCO E HIGADO (liver)
[fiche affixe](#)

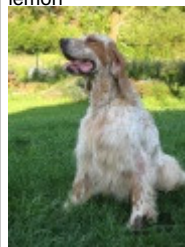


hosted by setter-anglais.fr

Père
EUSKITZE HAKINNEN
2008-05-12 (M)
LOE 1816533
(TR.GB)
- bluebelton



PALAZIENSIS RAMBO 1999-11-01
(M) LOI LO0060896 (Ch WOF/CH, IT T,
ITF, Camp. Tr. (Ch GQ), CH(ES)T, CH(GB)T) -
lemon



PALAZIENSIS PEPE 1997-07-03 (M)
LOI LO99203608 - liver



GUERCINO DELLA FRATTONA
1996-05-07 (M) LOI ST554737 -
bluebelton

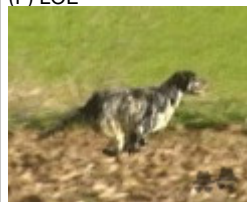
PALAZIENSIS NIVES 1995-11-13 (F)
LOI ST529742 - liver

LADY 1994-04-30 (F) LOI ST499069
(Ch A) - bluebelton

IRAK DEL LADERCHI 1990-01-10 (M)
LOI ST411384 - tricolore

LOLA 1988-05-03 (F) LOI ST366110 -
bluebelton

EUSKITZE FIORENTINA 2006-06-19
(F) LOE



EUSKITZE RUGBY 2000-06-02 (M)
LOE 1205440 - bluebelton



**RADENTIS
SBRANCO**
1991-07-01 (M) LOI
ST448908 (CH IB, Ch.
Int. Lav.) - lemon

EUSKITZE KATI (F) LOE 755772

NESKA 1997-09-02 (F) LOE 873632
(Ch IT) - tricolore



EUSKITZE DAMBA (M)
LOE 577594

CINA DE GONZA LOSA (F) LOE
640953 (Champion)

GIBELTARIK BORIS 2000-12-14 (M)
GKC02014 (Ch T GQ) - liver



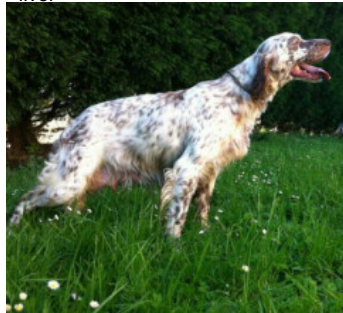
DODGE DEL TIRSO 1998-02-14 (M)
LOI LO9942918 (Ch IT IT-T, CHIB, Camp.
Tr. (Ch GQ)) - bluebelton



DERRYK
1991-05-10 (M) LOI
ST443351 (Ch GQ) -
bluebelton

ASTRA DEL TIRSO 1992-10-01 (F)
LOI ST454300 - lemon

Mère
DENDABERRI KIKA
2008-11-15 (F)
LOE 1859451
(Tr Primavera. Tr Cp. Tr Gb.)
- liver



RADENTIS ERICA 1995-05-25 (F)
LOI ST531494 ((CH(I)B)) - lemon



**RADENTIS
SBRANCO**
1991-07-01 (M) LOI
ST448908 (CH IB, Ch.
Int. Lav.) - lemon

ODE DEL SOLE 1993-09-10 (F) LOI
ST490145 - liver

DENDABERRI LIRU 2006-07-22 (F)
LOE 1662001 - lemon



RADENTIS D'ESPANA 1995-05-22
(M) LOE 990823 (Ch IT B, Ch GQ) -
lemon



**RADENTIS
SBRANCO**
1991-07-01 (M) LOI
ST448908 (CH IB, Ch.
Int. Lav.) - lemon

RADENTIS ALA 1994-03-15 (F) LOI
ST496649 (Ch T) - lemon

DENDABERRI GINA (F) LOE
1512376

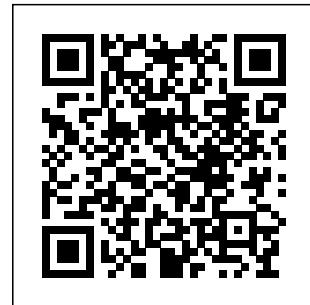
PALAZIENSIS RAMBO
1999-11-01 (M) LOI
LO0060896 (Ch WOF/CH, IT T,
ITF, Camp. Tr. (Ch GQ), CH(ES)T,
CH(GB)T) - lemon

DENDABERRI CRISTINA 1999-10-12
(F) LOE 1134757 - lemon

Sang italien (estimation) : 95 %
Estimation des points au pédigrée : 32

Taux de consanguinité (estimation) : 7.5 %

PALAZIENSIS RAMBO (2 X 4) : 0.031494
RADENTIS SBRANCO (4 X 4,4) : 0.016602
DECOR LOT (6,6,7,7,7,7,7,8,8,8 X 6,6,7,7,7,7,7,7,7,8,8) : 0.014252
ROVAL MOZART (5,6,7 X 5,8) : 0.003777
CINA DE GONZA LOSA (4 X 6) : 0.001984
RADENTIS BORG (5 X 5,5,5) : 0.001953
RADENTIS GIAN (6 X 6,6,6,6,6,7,8,8) : 0.001465
DUN DEL MESHIO (8,8,8,8,8 X 7,8,8,8,8,8,8,8,8,8,8) : 0.001404
RADENTIS DIDO (6,7 X 6,6,7) : 0.000854
OLAF DEI TRE PONTI (7,8 X 7,7) : 0.000366
ATOS DELLE TORRICELLE (7 X 6) : 0.000244
MUR (7,8 X 7,8) : 0.000092
GIP DELLA BASSANA (6,7 X 8) : 0.000061
BAIRO (7 X 7,7,7,8) : 0.000061
CRISMANI OLAF (8 X 8) : 0.000031



Note : les données ne sont pas garanties. Elles ont été entrées par les membres sans garantie d'exactitude.