

HORUS DES SONNAILLES DU HAUT DAVY

2012-10-10 (M) LOF 225407/38374

Color: Fau.PBl.Env. (lemon) / Qualifications: TR CH-FTP / Dyspl.: A
Kennel

hosted by setter-anglais.fr

KAPO 2003-11-10 (M) LOI LO0439835
(Ch IT GQ) - bluebelton

Father

CAPO DU VAL DU RUTH 2007-01-09
(M) LOF 189873/31383 (CHGQ - TRGQ) - lemon**NERO** 1997-03-29 (M) LOI LO9817889
(Ch T, Ch GQ) - bluebelton**GUFO DI VAL DI CHIANA** 1994-04-01
(M) LOI ST514177 (Ch GQ) - bluebelton**KELLI** 1992-06-18 (F) LOI ST466220 - bluebelton**KYBA** 1998-01-01 (F) LOI LO98118951
- lemon**VANGOGH DELL'AD MONTES**
1992-07-30 (M) LOI ST463291 (Camp. Ripr.) - bluebelton**SARA** 1989-04-30 (F) LOI ST395811 - bluebelton**GEX DU VAL DU RUTH** 1991-08-30
(M) LOF 111219/15890 (TR GQ) - lemon**ROVAL MOZART** 1987-03-04 (M) LOI ST350880 (CH GQ, Ch. Int. Lav., Ch. Ital. Lav., Camp. Ripr.) - bluebelton**ROSENN DU MAS D'EYRAUD**
2000-05-29 (F) LOF 154091/28767 (Ch GQ) - lemon**AOSTE DE KERFEUIL** 1985-06-07 (F)
LOF 83309/13073 (TR GQ) - lemon**MALINE** 1996-05-17 (F) LOF 133269/24239 - lemon**HAUBIN DE L'ECHO DE LA FORET**
1992-08-17 (M) LOF 115590/17502 - lemon**HINDY** 1992-12-02 (F) LOF 116390/21978 - tricolore

COHL DU VAL DU RUTH 2007-01-09
(M) LOF 189876/31380 - lemon

IZAR DE MENDI AÑEZCAR
2006-05-11 (F) LOF 193526/36279
(TAN) - lemon



KAPO 2003-11-10 (M) LOI LO0439835
(Ch IT GQ) - bluebelton



ROSENN DU MAS D'EYRAUD
2000-05-29 (F) LOF 154091/28767 (Ch
GQ) - lemon



RADENTIS BILLO 2001-10-25 (M) LOE
1376724 (Ch GQ) - lemon



GAITA DE MENDI AÑEZCAR (F) LOE
1232591 (Champion)



NERO 1997-03-29 (M) LOI LO9817889
(Ch T, Ch GQ) - bluebelton



KYBA 1998-01-01 (F) LOI LO98118951
- lemon

GEX DU VAL DU RUTH 1991-08-30
(M) LOF 111219/15890 (TR GQ) - lemon



MALINE 1996-05-17 (F) LOF
133269/24239 - lemon

RADENTIS SBRANCO 1991-07-01 (M)
LOI ST448908 (CH IB, Ch. Int. Lav.) - lemon



RADENTIS ALA 1994-03-15 (F) LOI
ST496649 (Ch T) - lemon

RADENTIS D'ESPANA 1995-05-22 (M)
LOE 990823 (Ch IT B, Ch GQ) - lemon



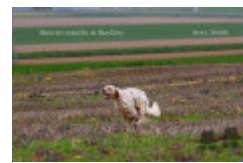
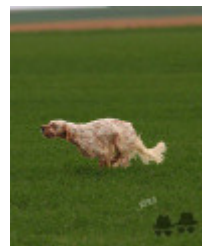
GANDI DE MENDI AÑEZCAR (F) LOE
1044695 (Champion) - tricolore



Mother
ESTER DE KERFEUIL 2009-04-20 (F)
LOF 203035/39895 (TAN) - lemon



Breeder: MICHEL LEROUX / Owner: LAURENT Régis (06.86.61.23.49)
Sélection au PSS 2016 CACIB meilleur de race à Saint Brieuc 2015Cot.4 HD-A
Size: 60 cm
Cotation (FR): 4
Chip : 250269604811944
DNA deposit
Italian breeding (estimated): 79%
Points in pedigree: 55

Estimated coefficient of inbreeding: 13.5 %KAPO (2 X 3) : 0.063599ROSENN DU MAS D'EYRAUD (2 X 3) : 0.063477DECOR LOT (5,6 X 6,7,7,7,7,7,8,8,8,8,8) : 0.005737DUN DEL MESCHIO (6,7,7,8,8 X 7,8,8,8,8) : 0.000824ALMER (6,6 X 7,7,7) : 0.000488BASSINO (6 X 7,7) : 0.000244LEM DEL RESEGONE (6,7,8,8,8,8,8,8 X 7,8) : 0.000183ARO (7,7 X 8,8,8,8) : 0.000122PUCK DE COAT AN HAY (7 X 8,8) : 0.000061CRISMANI DIK (7,8 X 8) : 0.000031

Note: data are entered by members. There is no guarantee about accuracy of data.