

PIANIGIANI'S FULL

2010-01-29 (M) LOI 10164097
Couleur : BIANCO NERO (bluebelton)
[fiche affixe](#)



hosted by setter-anglais.fr

PIANIGIANI'S COLT 2003-03-14 (M)
LOI LO0399879 (CH, Ch. Int. Lav.) -
bluebelton



Père
PIANIGIANI'S KIM
2007-01-09 (M)
LOI LO0776919
- bluebelton

PIANIGIANI'S DESIREE 1998-02-28
(F) LOI LO98140272 - lemon

PIANIGIANI'S ROCHY 1996-07-30
(M) LOI ST552183 (CH, Ch. Int. Lav.,
Camp. Ripr.) - bluebelton



PIANIGIANI'S KIRA 1997-02-17 (F)
LOI LO9819916 (Camp. Ripr.) -
bluebelton

FRANCINI'S DREAM 1985-06-24 (M)
LOI ST315271 (Ch. Ital. Lav., Ch. Int. Lav.,
Camp. Ripr.) - bluebelton



PIANIGIANI'S SILA 1995-08-02 (F)
LOI ST531873 - bluebelton

TEX DELLA PANIA
1993-01-02 (M) LOI
ST474228 (CH,
Camp. Ripr.) -
tricolore



PIANIGIANI'S KEI
1991-02-03 (F) LOI
ST435283 (Ch Italie T,
IT T, Reproducteur) -
bluebelton



DIUK 1990-03-20 (M)
LOI ST413821 (Ch. Ital.
Lav., Ch. Int. Lav., Camp.
Ripr.) - bluebelton



PIANIGIANI'S RAISSA 1996-03-15 (F)
LOI ST543479 - bluebelton

FRANCINI'S RAS
1982-10-26 (M) LOI
ST254436 (Camp. Ripr.) -
bluebelton



QUARA DEI BOIARDI 1980-11-06 (F)
LOI ST222874 - tricolore







DIUK 1990-03-20 (M)
LOI ST413821 (Ch. Ital.
Lav., Ch. Int. Lav., Camp.
Ripr.) - bluebelton



PIANIGIANI'S KEI
1991-02-03 (F) LOI
ST435283 (Ch Italie T,
IT T, Reproducteur) -
bluebelton



<p>Mère <u>PIANIGIANI'S LEA</u> 2007-01-10 (F) LOI LO0776940 - Bianco Liver</p>	<p><u>PIANIGIANI'S STARK</u> 2004-01-08 (M) LOI LO0462428 - bluebelton</p>	<p><u>PIANIGIANI'S ROCHY</u> 1996-07-30 (M) LOI ST552183 (CH, Ch. Int. Lav., Camp. Ripr.) - bluebelton</p> 	<p><u>TEX DELLA PANIA</u> 1993-01-02 (M) LOI ST474228 (CH, Camp. Ripr.) - tricolore</p> 
	<p><u>PIANIGIANI'S LEDA 4</u> 2001-11-26 (F) LOI LO0242165 - lemon</p>	<p><u>PIANIGIANI'S SIRIA</u> 2000-07-28 (F) LOI LO0130448 (Ch. Ital. Lav.) - bluebelton</p>	<p><u>PIANIGIANI'S SAIMON</u> 1994-01-02 (M) LOI ST496239 (CH, Ch. Ital. Lav., Camp. Ripr.) - bluebelton</p> 
		<p><u>PIANIGIANI'S SALLY</u> 1999-03-08 (F) LOI LO99135922 - bluebelton</p>	<p><u>PIANIGIANI'S MORA</u> 1998-08-04 (F) LOI LO9946386 - tricolore</p>
			<p><u>FRANCINI'S BRICK</u> 1987-02-21 (M) LOI ST354930 (Ch. Int. Lav.) - tricolore</p>
			<p><u>DRIMMINA</u> 1989-01-08 (F) LOI ST388783 (Camp. Ripr.) - bluebelton</p>
			<p><u>TEX DELLA PANIA</u> 1993-01-02 (M) LOI ST474228 (CH, Camp. Ripr.) - tricolore</p> 
			<p><u>PIANIGIANI'S KIRA</u> 1995-08-12 (F) LOI ST531923 - tricolore</p>

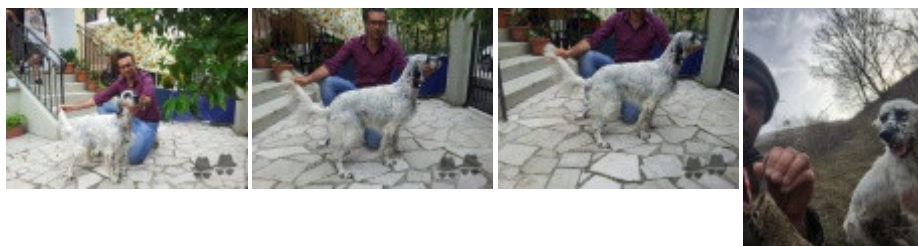
Propriétaire : ROSATI GREGORY (3395995194, rosatigregory@virgilio.it)

Puce : 380260080052442

Estimation des points au pédigrée : 16

Taux de consanguinité (estimation) : 11.4 %

PIANIGIANI'S ROCHY (3 X 3) : 0.032104
FRANCINI'S DREAM (3,5,5,6 X 5,6,7,8) : 0.021973
TEX DELLA PANIA (4,5 X 4,4,5) : 0.021652
DIK DELLA MARCIOLA (5,6,6,7,7,7,7,8 X 6,6,6,7,7,8,8) : 0.008026
PIANIGIANI'S KEI (4,4 X 4) : 0.007812
DRIMMINA (5 X 4,5,6,7) : 0.007324
DUN DEL MESCHIO (7,7,7,7,8,8,8,8,8 X 6,7,7,7,7,8,8,8,8,8) : 0.005371
FIAMMA DEL RAMACETO (6,6,7,7 X 6,6,7,8) : 0.002563
FRANCINI'S RED (5,5,6,6 X 5) : 0.001953
DEM (7,8 X 5,6,6,7,7,7,8,8) : 0.001923
FRANCINI'S VANITY (5,7,7,8 X 7,7,8,8) : 0.001190
DERO (6,6,7,8 X 6,7,7,8) : 0.001099
BETA (6,6,7,7 X 6) : 0.000488
LEM DEL RESEGONE (6,8,8,8 X 8,8,8,8) : 0.000427
MINA (7,7,8,8,8,8 X 7) : 0.000122
CRISMANI LIFOR (8,8,8,8 X 8,8) : 0.000122
TRUEBA DELLA FAGIANA (7,8,8 X 8,8,8) : 0.000122
BRILL 2 DEL ROVERE (8 X 8) : 0.000031



Note : les données ne sont pas garanties. Elles ont été entrées par les membres sans garantie d'exactitude.