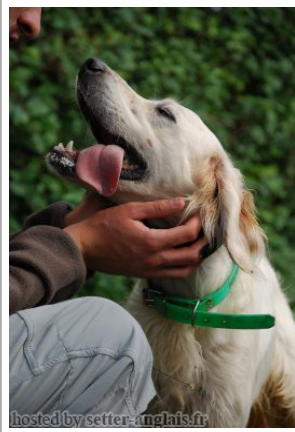


HERMES DU CAUSSE DU LARZAC

2012-05-21 (M) LOF 222045
Couleur : Fau.PBl.Env. (lemon)
[fiche affixe](#)



Père
RADENTIS OSLO
2003-02-18 (M)
LOF 175114/27644
(CH.T. -CHP -CHA -CHIB -CHCS -TR)
- bluebelton



GIBELTARIK BORIS 2000-12-14 (M)
GKC02014 (Ch T GQ) - liver



ARIET ALESS SETTER 2000-02-15
(F) LOI LO0058153 - bluebelton

DODGE DEL TIRSO 1998-02-14 (M)
LOI LO9942918 (Ch IT IT-T, CHIB, Camp.
Tr. (Ch GQ)) - bluebelton



RADENTIS ERICA 1995-05-25 (F)
LOI ST531494 ((CH(I)B)) - lemon



LERRY 1997-02-14 (M) LOI
ST555862 (Ch GQ, Ch IT) - bluebelton



ODE DEL SOLE 1993-09-10 (F) LOI
ST490145 - liver



DERRYK
1991-05-10 (M) LOI
ST443351 (Ch GQ) -
bluebelton

ASTRA DEL TIRSO 1992-10-01 (F)
LOI ST454300 - lemon



**RADENTIS
SBRANCO**
1991-07-01 (M) LOI
ST448908 (CH IB, Ch.
Int. Lav.) - lemon

ODE DEL SOLE 1993-09-10 (F) LOI
ST490145 - liver



ARNO 1988-04-17
(M) LOI ST374735
(Ch. Int. Lav., Camp.
Ripr., Ch. Ital. Lav.) -
lemon

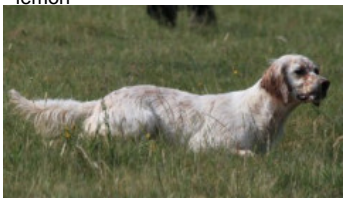








PICENUM UNGA
1990-10-02 (F) LOI
ST430406 (CH GQ) -
liver



AMBO DEL VARO
1987-10-04 (M) LOI
ST360725 (Ch. Int. Lav.) -
lemon

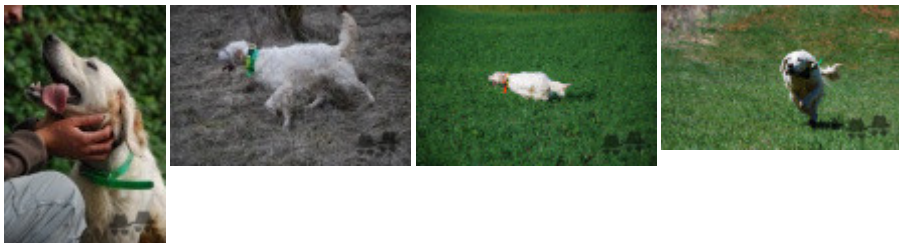
UANA DEL SOLE 1987-01-05 (F) LOI
ST342352 - liver

<p>Mère</p> <p><u>DORY DE LA HÊTRAIE POURPRE</u> 2008-01-21 (F) LOF 196071/39021 (TAN, TAC) - lemon</p> 	<p><u>BENHUR DE LA VALLEE DE L'ANDELOT</u> 2006-04-23 (M) LOF 186111/30820 (TAN) - bluebelton</p> 	<p><u>SELECT DU SENTIER DES LUTINS</u> 2001-06-23 (M) LOF 159944/26181 (TR, CH A) - tricolore</p> 	<p><u>NASH DU POULIT SAN DANIS</u> 1997-01-01 (M) LOF 136341/25088 (TR) CHP CH.T. CHITF CHP - bluebelton</p> 
	<p><u>SUN</u> 2001-10-04 (F) LOF 165671/34016 (TAN) - lemon</p>	<p><u>PEPSY DE BÉHIGO</u> 1999-03-18 (F) LOF 147046/27674 - lemon</p>	<p><u>LIZA DU SENTIER DES LUTINS</u> 1995-07-19 (F) LOF 128401/22824 (CH P) - tricolore</p> 
	<p><u>FIZZ DE CODORNIS DU HAUT DE COUBLUCQ</u> 1990-12-01 (M) LOF 106839/15265 - Noi Mar Fau PBI Env Mou</p>	<p><u>JAFFA DE BÉHIGO</u> 1994-05-11 (F) LOF 122641/22109 (TR, CH A, CH P, CH IB) - lemon</p> 	<p><u>COOL DE CODORNIS</u> 1987-08-02 (M) LOF 92622/12503 (CH IT, CH GQ) - bluebelton</p> 
	<p><u>NOISETTE</u> 1997-04-21 (F) LOF 137338/27010 - lemon</p>	<p><u>DALI DE CODORNIS</u> 1988-05-11 (F) LOF 95541/15352 - lemon</p>	<p><u>DANO DU CLOS DE QUICHENOTTE DES FONDS</u> 1988-10-19 (M) LOF 98018/13491 - bluebelton</p>
		<p><u>GINA</u> 1991-08-16 (F) LOF 110575/20965 - lemon</p>	

Eleveur : PORTES NICOLAS / Propriétaire : MAUREL AMIC (amic.maurel@live.fr)
 Puce : 250269604616421
 Sang italien (estimation) : 71 %
 Estimation des points au pédigrée : 24

Taux de consanguinité (estimation) : 1.4 %

DECOR LOT (6,6,6,7,7,7,7,7 X 6,6,7) : 0.007080
DUN DEL MESCHIO (6,7,7,7,8,8,8,8,8,8,8,8,8 X 8,8,8,8,8) : 0.003174
ARNO (4 X 6) : 0.001953
ROVAL MOZART (5 X 6) : 0.001007
AMBRA DEL DIANELLA (7 X 7) : 0.000122
MUR (7,7,8 X 8) : 0.000092
BAIRO (7,8 X 8) : 0.000092
HALOA DELLA VECCHIA IRLANDA (6,7 X 8) : 0.000061
URSULA DEL SOLE (8 X 7) : 0.000061
LEM DEL RESEGONE (8 X 7) : 0.000061



Note : les données ne sont pas garanties. Elles ont été entrées par les membres sans garantie d'exactitude.

