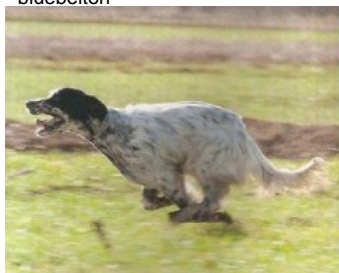


OTO DE LA SOLARIEGA

2013-04-14 (M) LOE 2137776
Couleur : Blanco Hígado
[fiche affixe](#)



Père
PICASSO
2007-07-02 (M)
LOI LO0864657
(Camp. Soc., CH GQ, Camp. Ripr., Ch. Int. Lav.)
- bluebelton



KAPO' 2003-11-10 (M) LOI
LO0439835 (Ch IT GQ) - bluebelton



ASIA 2003-07-08 (F) LOI
LO03125315 - bluebelton



NERO 1997-03-29 (M) LOI
LO9817889 (Ch T, Ch GQ) - bluebelton



KYBA 1998-01-01 (F) LOI
LO98118951 - lemon



ALA 2001-04-30 (F) LOI LO01153556
- bluebelton

GUFO DI VAL DI CHIANA
1994-04-01 (M) LOI
ST514177 (Ch GQ) -
bluebelton



KELLI 1992-06-18 (F)
LOI ST466220 -
bluebelton



VANGOGH DELL'AD MONTES
1992-07-30 (M) LOI ST463291 (Camp.
Ripr.) - bluebelton

SARA 1989-04-30 (F) LOI ST395811 -
bluebelton

**RADENTIS
SBRANCO**
1991-07-01 (M) LOI
ST448908 (CH IB, Ch.
Int. Lav.) - lemon







**KELLI DELLA
MARIKA** 1995-08-06
(F) LOI ST530204 (Ch.
Ital. Lav.) - bluebelton



FRANCINI'S JEFF
1993-04-03 (M) LOI
ST479317 (Ch. Ital. Lav.,
Ch. Int. Lav., Camp. Ripr.) -
bluebelton



MERY 1999-05-29 (F) LOI
LO99173799 - bluebelton

<p>Mère <u>URIA DI VAL DI CHIANA</u> 2010-09-25 (F) LOE 2014411 - lemon</p>	<p><u>KAPO'</u> 2003-11-10 (M) LOI LO0439835 (Ch IT GQ) - bluebelton</p> 	<p><u>NERO</u> 1997-03-29 (M) LOI LO9817889 (Ch T, Ch GQ) - bluebelton</p> 	<p><u>GUFO DI VAL DI CHIANA</u> 1994-04-01 (M) LOI ST514177 (Ch GQ) - bluebelton</p> 
	<p><u>LEA</u> 2009-01-21 (F) LOI LO1011151 - lemon</p>	<p><u>KYBA</u> 1998-01-01 (F) LOI LO98118951 - lemon</p>	<p><u>VANGOGH DELL'AD MONTES</u> 1992-07-30 (M) LOI ST463291 (Camp. Ripr.) - bluebelton</p>
	<p><u>VEGA</u> 2005-11-14 (M) LOI LO0669697 (Ch GQ) - lemon</p> 	<p><u>MARTIANISIUM LUTER</u> 2001-05-05 (M) LOI LO01138037 (Ch GQ (Camp. Tr.)) - bluebelton</p>	<p><u>MARTIANISIUM FRINA</u> 2002-01-22 (F) LOI LO0247253 (Camp. Ripr.) - bluebelton</p>
	<p><u>TURBA</u> 2005-08-25 (F) LOI LO0626221 - tricolore</p>	<p><u>ENRY</u> 2002-02-24 (M) LOI LO0297391 - tricolore</p>	<p><u>LAIKA</u> 1997-11-18 (F) LOI LO98108566 - bluebelton</p>

Propriétaire : Alfonso Garcia&Alfonso González (alfonsoreinadama@gmail.com)
Sang italien (estimation) : 100 %
Estimation des points au pédigrée : 35

Taux de consanguinité (estimation) : 15.3 %

KAPO' (2 X 2) : 0.127197
NERO (3 X 3,5,6) : 0.011765
NEGUS (5,7 X 5,6,6,6,7,7,8,8) : 0.005249
DECOR LOT (6,7,7,7,7,8,8 X 6,8,8) : 0.001953
VANGOGH DELL'AD MONTES (4 X 4,7,8) : 0.001522
FRANCINI'S LUCA (5,6 X 7,7) : 0.001465
LEM DEL RESEGONE (6,7,7,8,8,8,8,8,8 X 6,7,8,8,8,8,8) : 0.001343
FRANCINI'S SALLY (5 X 7) : 0.000519
MERA DELL'ORSONE (6,7,8,8,8 X 6,8,8,8) : 0.000427
DUN DEL MESCHIO (7,8,8,8,8,8 X 8,8) : 0.000366
DEM (6,7,7 X 8,8,8) : 0.000366
RADENTIS GIAN (6,6 X 8) : 0.000244
FRANCINI'S PEGGY (7,8,8 X 7) : 0.000122
OLAF DEI TRE PONTI (6 X 6,8) : 0.000122



Note : les données ne sont pas garanties. Elles ont été entrées par les membres sans garantie d'exactitude.

