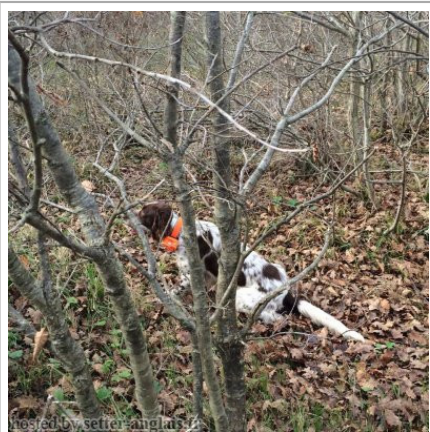


GISTREDO VILMA

2014-06-01 (F) LOE 2233074
Couleur : Liver
[fiche affixe](#)



Père
EROS DI LORO PICENO
2006-09-15 (M)
LOI LO0743490
(Camp. Tr. (Ch GQ))
- liver



BIG JIM 2000-12-01 (M) LOI
LO0188207 (CH GQ, Ch. Int. Lav., Camp.
Ripr., Ch. Ital. Lav.) - liver



TANGA DI LORO PICENO
1999-09-25 (F) LOI LO0049017 (Camp.
Tr. (Ch GQ)) - bluebelton



LERRY 1997-02-14 (M) LOI
ST555862 (Ch GQ, Ch IT) - bluebelton



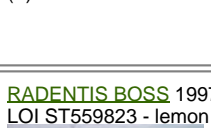
RADENTIS TANGA 1998-09-15 (F)
LOI LO9958147 - lemon



FRANCINI'S JEFF 1993-04-03 (M)
LOI ST479317 (Ch. Ital. Lav., Ch. Int. Lav.,
Camp. Ripr.) - bluebelton



DARA DI LORO PICENO 1991-02-18
(F) LOI ST449335 - liver



RADENTIS BOSS 1997-01-13 (M)
LOI ST559823 - lemon



RADENTIS NADA 1999-07-10 (F) LOI
LO0017824 - liver



HIV DE PLAYABARRI (M) LOE
539995

JUMA DE URTXUBIGANE (F) LOE
1061009

ARNO 1988-04-17
(M) LOI ST374735
(Ch. Int. Lav., Camp.
Ripr., Ch. Ital. Lav.) -
lemon



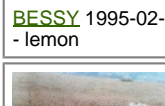
PICENUM UNGA
1990-10-02 (F) LOI
ST430406 (CH GQ) -
liver



**RADENTIS
SBRANCO**
1991-07-01 (M) LOI
ST448908 (CH IB, Ch.
Int. Lav.) - lemon



BESSY 1995-02-10 (F) LOI ST515746
- lemon



FRANCINI'S LUCA
1989-07-08 (M) LOI
ST404483 (Ch. Ital.
Lav., CH GQ, Ch. Int.
Lav., Camp. Ripr.) -
tricolore



FRANCINI'S SALLY 1986-01-19 (F)
LOI ST325298 (Camp. Ripr.) - bluebelton



ROYAL FERRON 1989-12-15 (M) LOI
ST408816 - bluebelton



ZINGARA DI LORO PICENO
1986-11-01 (F) LOI ST359012 -
bluebelton



**RADENTIS
SBRANCO**
1991-07-01 (M) LOI
ST448908 (CH IB, Ch.
Int. Lav.) - lemon



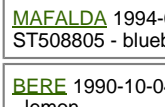
ODE DEL SOLE 1993-09-10 (F) LOI
ST490145 - liver



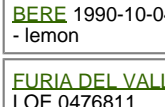
**RADENTIS
SBRANCO**
1991-07-01 (M) LOI
ST448908 (CH IB, Ch.
Int. Lav.) - lemon



MAFALDA 1994-07-15 (F) LOI
ST508805 - bluebelton



BERE 1990-10-04 (M) LOI ST429298
- lemon



FURIA DEL VALLE DE MENA (F)
LOE 0476811

DUM II DE URTXUBIGANE (M) LOE

CUMBA DE URTXUBIGANE (F) LOE

Mère
SARA DE URTXUBIGANE dit INDIA
2005-03-01 (F)
LOE 1519311
(P.A.N.)
- liver



RADENTIS CLIO 2003-05-20 (M) LOE
1454658 (Tr.GB(E.06)) - liver

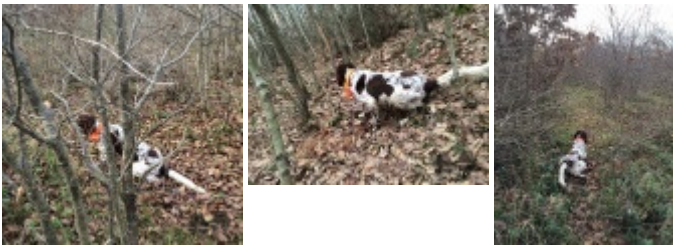


LUSI DE URTXUBIGANE (F) LOE
1188659

Propriétaire : Aslam Sen
Puce : 981098104501596
Sang italien (estimation) : 93 %
Estimation des points au pédigrée : 30

Taux de consanguinité (estimation) : 3.6 %

RADENTIS SBRANCO (4 X 4,4) : 0.016602
DECOR LOT (5,6,7,7,7,7,7 X 7,7,7,7,7,7,7) : 0.008301
DUN DEL MESCHIO (6,7,7,7,8,8,8,8 X 7,7,7,7,8,8,8,8) : 0.005951
RADENTIS GIAN (6 X 6,6,6,6) : 0.000977
ROYAL VIENNA (5 X 6) : 0.000977
DEM (5 X 6) : 0.000977
LEM DEL RESEGONE (6,7,7,8 X 7,8) : 0.000824
MERA DELL ORSONE (6 X 7,8) : 0.000366
MUR (7,8 X 7,8) : 0.000275
DIK DELLA MARCIOLA (6 X 7) : 0.000244
RUDY DEL DIANELLA (5 X 8) : 0.000244
FRANCINI'S RAS (5 X 8) : 0.000244
OLAF DEL TRE PONTI (6 X 7,8) : 0.000122
AMBRA DEL DIANELLA (8 X 8,8) : 0.000061
CRISMANI DIK (7,8 X 8) : 0.000031
DERK (8 X 8) : 0.000031



Note : les données ne sont pas garanties. Elles ont été entrées par les membres sans garantie d'exactitude.