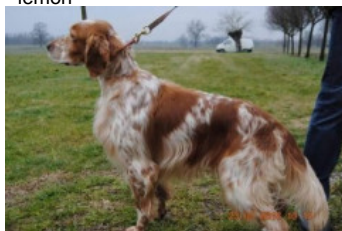


AMANDA DELLA CERNAIA

(F) LOE 97505
Couleur : Noi.PBl.Env (bluebelton)
[fiche affixe](#)



Père
RICO DEL DIPINTI
2007-01-06 (M)
LOI LO0775939
(Ch. Ital. Lavoro, Camp. Tr. (Ch GQ))
- lemon



ULAN DEL TIRSO 2001-06-24 (M)
LOI LO01170093 (Ch. Italiano Lavoro-
Camp. Tr. (Ch GQ) - Camp. Repro.) - lemon



MARZALE'S ROMINA 2001-10-15 (F)
LOI LO0243398 - lemon

DERRYK 1991-05-10 (M) LOI
ST443351 (Ch GQ) - bluebelton



BIRBA DEL LAGO VERDE
1994-05-06 (F) LOI ST509207 -
bluebelton

CLOE 1997-02-18 (F) LOI LO9812233
(Ch. Ital. Lav.) - lemon



ROVAL MOZART
1987-03-04 (M) LOI
ST350880 (CH GQ,
Ch. Int. Lav., Ch. Ital.
Lav., Camp. Ripr.) -

bluebelton

LILLA 1986-06-15 (F) LOI ST339376
(Ch GQ) - bluebelton

AMBO DEL VARO
1987-10-04 (M) LOI
ST360725 (Ch. Int. Lav.) -
lemon








TEA DEL LAGO VERDE 1988-05-01
(F) LOI ST375143 - bluebelton

AFTER 1990-09-01
(M) LOI ST427925
(CH) - tricolore

GIOTTINA DI LORO PICENO
1993-01-10 (F) LOI ST480007 -
bluebelton

PIANIGIANI'S BRIK 1996-03-13 (M)
LOI ST543461 - lemon

ELSA DI VAL DI CHIANA 1995-12-05
(F) LOI ST530833 - bluebelton

<p>Mère</p> <p><u>SORAIA</u> 2002-09-01 (F) LOI LO02165455 (Ch. Ital. Lav.) - bluebelton</p> 	<p><u>RAS DI GRUMA</u> 2001-08-05 (M) LOI LO01160073 (Ch. Ital. Lav.) - bluebelton</p> 	<p><u>ARNO</u> 1988-04-17 (M) LOI ST374735 (Ch. Int. Lav., Camp. Ripr., Ch. Ital. Lav.) - lemon</p> 	<p><u>CRISMANI ATOS</u> 1980-02-01 (M) LOI ST208763 (Ch IT) - liver</p> 	
		<p><u>DAISY DI GRUMA</u> 1994-08-25 (F) LOI ST515239 (Ch. Ital. Lav., Ch. Int. Lav., Camp. Ripr.) - tricolore</p> 	<p><u>SWING DELLA VECCHIA IRLANDA</u> 1984-08-01 (F) LOI ST295020 (Ch L) - lemon</p>	<p><u>EST DI GRUMA</u> 1990-06-20 (M) LOI ST426023 - lemon</p>
	<p><u>GEA DI GRUMA</u> 2000-01-02 (F) LOI LO0049878 (Ch. Ital. Lav.) - tricolore</p>		<p><u>NAJO</u> 1994-09-01 (M) LOI ST510284 (Camp. Ripr.) - lemon</p>	<p><u>QUEENN DI GRUMA</u> 1992-01-15 (F) LOI ST459001 - tricolore</p> 
		<p><u>ARCO DI GRUMA</u> 1998-05-19 (M) LOI LO9933533 (Ch. Ital. Lav., Ch. Int. Lav., Camp. Ripr.) - tricolore</p>	<p><u>DAISY DI GRUMA</u> 1994-08-25 (F) LOI ST515239 (Ch. Ital. Lav., Ch. Int. Lav., Camp. Ripr.) - tricolore</p> 	<p><u>GIOSUE DI GRUMA</u> 1995-05-15 (F) LOI 526971 - bluebelton</p>
	<p><u>CALI DI GRUMA</u> 1996-07-17 (F) LOI 548341 - bluebelton</p>		<p><u>NEFERTARI DI GRUMA</u> 1995-05-10 (F) LOI 521202 - tricolore</p>	

Sang italien (estimation) : 100 %
Estimation des points au pédigrée : 46

Taux de consanguinité (estimation) : 1 %

DUN DEL MESCHIO (7,7,7,7,7,8,8,8,8,8,8,8 X 7,7,8,8,8,8,8) : 0.004852
DECOR LOT (5,5,6,6,6 X 7) : 0.001709
LEM DEL RESEGONE (7,8,8 X 7,7,7,8,8,8,8,8) : 0.001465
MUR (6,7 X 7,8,8) : 0.000732
MERA DELL'ORSONE (8 X 7,7,7,8,8,8,8,8,8) : 0.000366
CRISMANI DIK (8,8 X 8,8,8,8) : 0.000244
BIONDA BORGONOVESE (7 X 8,8) : 0.000122
FALCO 28 (7 X 8,8) : 0.000122
LOPEZ DELLA BASSANA (6 X 8) : 0.000122
DEM (7 X 8) : 0.000061
DAGA (7,8,8 X 8) : 0.000031



Note : les données ne sont pas garanties. Elles ont été entrées par les membres sans garantie d'exactitude.

