










GORTINREAGH EPIE

2011-11-05 (F) KCSB-UNKNOWN12
Couleur : Tricolor (tricolore) / Titres : FTCH
[fiche affixe](#)



<p>Père BALLYELLEN CODY 2009-10-16 (M) Y66632 (Int FTCH) - lemon</p> 	<p>HEEGAARDS V.KODY (M) Y47640 - tricolore</p>	<p>SLETHALLEN'S KNOCKOUT 2005-08-09 (M) N25597/05 - tricolore</p>	<p>EQUIMARK (M) FDSB1079658</p> 
	<p>BALLYELLEN AOIFE 2007-11-21 (F) W55416 - lemon</p>	<p>HEEGAARDS Q RANDI II 2001-01-01 (F) DEN09759/2001</p>	<p>SHINE ON 1996-01-06 (F) FDSB1468923 - lemon</p>
<p>Mère GORTINREAGH DAISY 2008-08-20 (F) IKCY48798 - lemon</p>	<p>BRACKEN STANEDGE (M) 29924CR (F T CH) - tricolore</p>	<p>STORESKAR'S II ODIN 2000-05-26 (M) IKC-W00778 (F.T.Ch) - bluebelton</p>	<p>FAUN 1996-01-01 (M) N10836/96</p> <p>STORESKAR'S NICCOLI 1996-06-16 (F) N03480/97 - bluebelton</p>
	<p>GORTINREAGH BLOSSOM (F) IKCX26210 - lemon</p>	<p>KNOCKSMALL MOOSE (F) T67592 - bluebelton</p> 	<p>GARDENFIELD WARRIOR (M) KCSB0508CN (Int FTCH) - lemon</p> 
<p>GORTINREAGH DAISY 2008-08-20 (F) IKCY48798 - lemon</p>	<p>BRACKEN STANEDGE (M) 29924CR (F T CH) - tricolore</p>	<p>LEFANTA HALE (F) IKC-AF0900649 (FT CH IRL) - bluebelton</p>	<p>LEFANTA ROMMEL (M) IKC-002</p> <p>LEFANTA QUEEN (M) IRL-001</p>
		<p>GARDENFIELD WARRIOR (M) KCSB0508CN (Int FTCH) - lemon</p> 	<p>LEFANTA EZAR (M) IKCAA0900372 (IRL FT CH) - bluebelton</p> 
<p>GORTINREAGH DAISY 2008-08-20 (F) IKCY48798 - lemon</p>	<p>BRACKEN STANEDGE (M) 29924CR (F T CH) - tricolore</p>	<p>BALLYELLEN BETINA (F) 0247CM - tricolore</p>	<p>LEFANTA CRANNA (F) IKCT50231 (FT CH IRL) - bluebelton</p> 
		<p>GORTINREAGH DAISY 2008-08-20 (F) IKCY48798 - lemon</p>	<p>GARDENFIELD WARRIOR (M) KCSB0508CN (Int FTCH) - lemon</p> 
<p>GORTINREAGH DAISY 2008-08-20 (F) IKCY48798 - lemon</p>	<p>BRACKEN STANEDGE (M) 29924CR (F T CH) - tricolore</p>	<p>GORTINREAGH DAISY 2008-08-20 (F) IKCY48798 - lemon</p>	<p>LEFANTA PATSY (F) IKCS52812 (IR FT CH)</p> 
			<p>GORTINREAGH DAISY 2008-08-20 (F) IKCY48798 - lemon</p>

Propriétaire : G Devine
Sang italien (estimation) : 3 %
Estimation des points au pédigrée : 36

Taux de consanguinité (estimation) : 4.1 %

STORESKAR'S G SNORRE (4 X 4,5,5,5,6,6,6,7,8) : 0.028809

EQUIMARK (4,5,6 X 6,7,7,7,8,8,8,8) : 0.010254

URSKOGEN FATIMA (5,7 X 5,6,6,6,7,7,7,8) : 0.001770

DUNFJELLETS ZANTO (7,8 X 7,8,8,8) : 0.000153

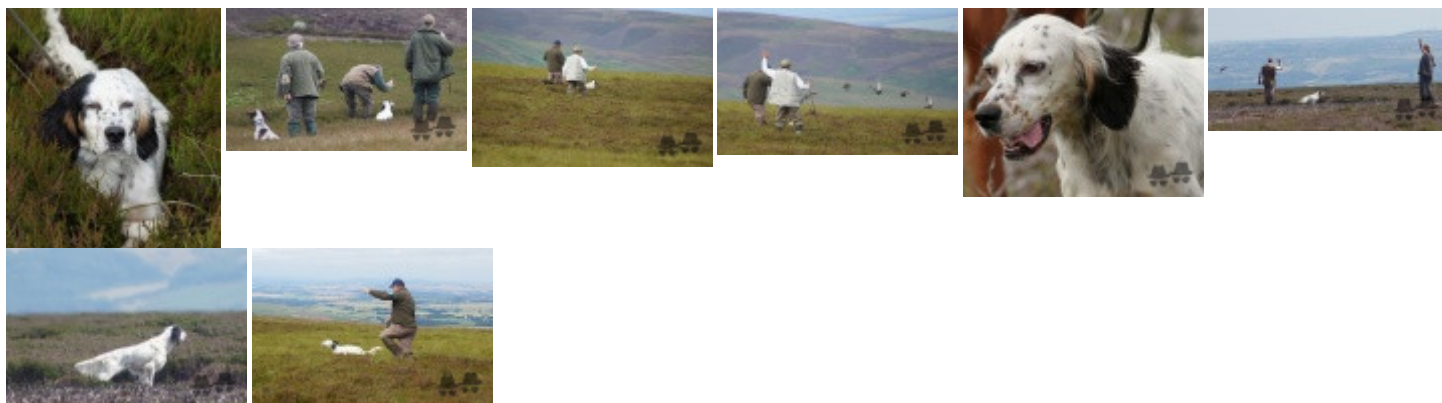
COPPERSMITH (6,6,7,8 X 8) : 0.000122

I'M OSCAR (6,6,7,8 X 8) : 0.000122



Résultats concours

Lieu	Date	Type	Epreuve	N° Juge	Conducteur	Qualif.	Pts
GB NI Pointer Club	2015-02-28	Partridge	open			2	20
GB Strabane & District Setter and P	2015-03-07	Partridge	open			1	24
GB Champion Stake	2015-07-29	Grouse	open			COM	8
GB Pointer Club Of Scotland	2015-08-04	Grouse	open			1	24
GB Northern Counties	2015-08-06	Grouse	open			1	24
Total des points Challenge Setter-anglais.fr 2015							100
GB Pointer Club Of Scotland	2016-08-04	Grouse	open		Devine	COM	8
GB North of Scotland Gundog Associa	2016-08-06	Grouse	open		Devine	4	12
Total des points Challenge Setter-anglais.fr 2016							20
GB SGA-Lochindorb	2017-03-29	Grouse	open	A. Law, D. Collins	G. Devine	1	24
GB ESC-Eggleston	2017-07-18	Grouse	open	J. Organ - C. Adamson	G. Devine	1	24
GB PCS-Dorback	2017-08-03	Grouse	open	S. Lound - C. Ford	G. Devine	COM	8
GB NoSGA-Dinnet	2017-08-10	Grouse	open	J. Kean - S. Stone	G. Devine	4	12
Total des points Challenge Setter-anglais.fr 2017							68
GB English Setter Club-Eggleston	2018-07-21	Grouse	open		G. Devine	4	12
Total des points Challenge Setter-anglais.fr 2018							12
GB Pointer & Setter - Bollihope	Ouvert	Grouse	champion			COM	16
Total des points Challenge Setter-anglais.fr 2021							16
Total des points							216
Coefficients : solo x1, couple x2 / GT x1, GN x2, GS (bécasse, bécassine) x2, GS montagne x3, Printemps x2, Grande Quête x4							



Note : les données ne sont pas garanties. Elles ont été entrées par les membres sans garantie d'exactitude.