

GUERLAIN DU MURAT

2011-07-01 (M) LOF 216830/37019
Couleur : Noï. PBI.Env.Mou. (bluebelton)
[fiche affixe](#)

Père
BASIC DU MAS D'EYRAUD
2006-10-06 (M)
LOF 189726/32039
(TR GQ)
- bluebelton



RADENTIS NOBEL 2003-01-08 (M)
LOF 181281/28903 (CHP CHA CH.T.) -
bluebelton



VISTA DU MAS D'EYRAUD
2004-05-31 (F) LOF 176273/33679 -
liver



RADENTIS NOMAR 1998-03-22 (M)
LOI LO98133353 ((CHGQ CHITF /
CHIT.B)) - liver



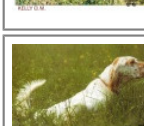
RADENTIS MISS 1998-01-10 (F) LOI
LO98106558 - lemon



**RADENTIS
SBRANCO**
1991-07-01 (M) LOI
ST448908 (CH IB, Ch.
Int. Lav.) - lemon



**KELLI DELLA
MARIKA** 1995-08-06
(F) LOI ST530204 (Ch.
Ital. Lav.) - bluebelton



**RADENTIS
SBRANCO**
1991-07-01 (M) LOI
ST448908 (CH IB, Ch.
Int. Lav.) - lemon

RADENTIS ALICE 1995-03-19 (F) LOI
ST519851 - tricolore



RADENTIS NOMAR
1998-03-22 (M) LOI
LO98133353 ((CHGQ CHITF /
CHIT.B)) - liver



ASIA 2000-01-27 (F) LOI LO0055139
- lemon



**GEX DU VAL DU
RUTH** 1991-08-30 (M)
LOF 111219/15890 (TR
GQ) - lemon

MALINE 1996-05-17 (F) LOF
133269/24239 - lemon

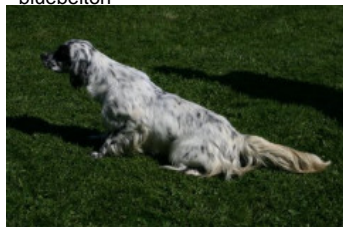


RADENTIS NOMAR
1998-03-22 (M) LOI
LO98133353 ((CHGQ CHITF /
CHIT.B)) - liver



RADENTIS MISS
1998-01-10 (F) LOI
LO98106558 - lemon

Mère
DALLAS DU MAS D'EYRAUD
2008-09-23 (F)
LOF 200587/39800
(TAN)
- bluebelton



BRANDO DU MAS D'EYRAUD
2006-10-31 (M) LOF 189739/31625
(Trialer, Ch A, Ch IT) - bluebelton



RADENTIS NOBEL 2003-01-08 (M)
LOF 181281/28903 (CHP CHA CH.T.) -
bluebelton



ROMANCE DU VAL DU RUTH
2000-05-10 (F) LOF 153660/28766 (Ch
P) - lemon



RADENTIS NOMAR
1998-03-22 (M) LOI
LO98133353 ((CHGQ CHITF /
CHIT.B)) - liver

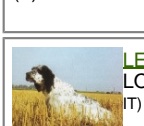


RADENTIS MISS
1998-01-10 (F) LOI
LO98106558 - lemon

LAZZI DE MALAUSE
1995-12-15 (M) LOF
130695/20981 (CHP TR
CH.T.) - lemon



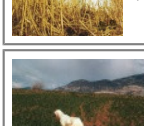
NEVA DU VAL DU RUTH 1997-11-30
(F) LOF 141374/27189 - lemon



RADENTIS COBRA 2000-06-30 (M)
LOI LO0128791 (Camp. Tr. (Ch GQ)) -
lemon



LERRY 1997-02-14 (M)
LOI ST555862 (Ch GQ, Ch
IT) - bluebelton



RADENTIS BELLA
1997-01-13 (F) LOI
ST559827 (IT Ch GQ) -
lemon



GEIN 2001-07-15 (F) LOI
LO01193269 - tricolore



FIERO 1996-08-10
(M) LOI ST551356
(CHGQ, Ch ITF, Ch IB, Ch
ITT) - lemon



EDBEL ICE 2000-01-24 (F) LOI
LO0059731 - bluebelton

