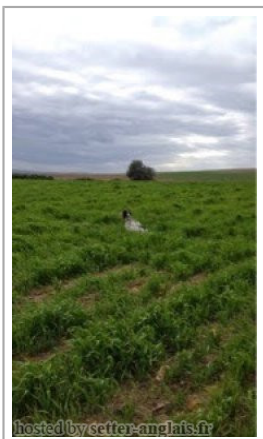
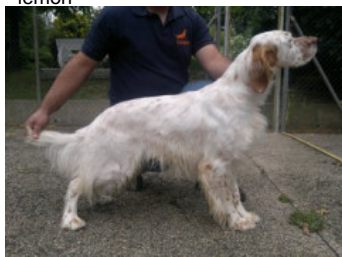


LEIOANDI ODIN

(M) LOE 1256425

Couleur : Tricolor (tricolore) / Titres : TrCP TrBC
[fiche affixe](#)

Père
RADENTIS DIRO
2006-07-25 (M)
LOI LO0737413
- lemon



RADENTIS NOMAR 1998-03-22 (M)
LOI LO98133353 ((CHGQ CHITF /
CHIT.B)) - liver



RADENTIS MISS 1998-01-10 (F) LOI
LO98106558 - lemon



RADENTIS SBRANCO 1991-07-01
(M) LOI ST448908 (CH IB, Ch. Int. Lav.) -
lemon



KELLI DELLA MARIKA 1995-08-06
(F) LOI ST530204 (Ch. Ital. Lav.) -
bluebelton



RADENTIS SBRANCO 1991-07-01
(M) LOI ST448908 (CH IB, Ch. Int. Lav.) -
lemon



RADENTIS ALICE 1995-03-19 (F) LOI
ST519851 - tricolore

RADENTIS BORG
1987-04-30 (M) LOI
ST350267 (Ch. Int.
Lav., CH GQ, Ch. Ital.
Lav., Camp. Ripr.) -

lemon

RADENTIS OLA 1984-09-30 (F) LOI
ST298174 - lemon

RADENTIS BORG
1987-04-30 (M) LOI
ST350267 (Ch. Int.
Lav., CH GQ, Ch. Ital.
Lav., Camp. Ripr.) -

lemon

ZARA DELLA MARIKA 1993-06-10
(F) LOI ST482071 - bluebelton

RADENTIS BORG
1987-04-30 (M) LOI
ST350267 (Ch. Int.
Lav., CH GQ, Ch. Ital.
Lav., Camp. Ripr.) -



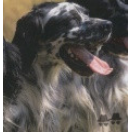



lemon

RADENTIS OLA 1984-09-30 (F) LOI
ST298174 - lemon

RADENTIS BORG
1987-04-30 (M) LOI
ST350267 (Ch. Int.
Lav., CH GQ, Ch. Ital.
Lav., Camp. Ripr.) -

lemon

RADENTIS DIVA
1989-01-02 (F) LOI
ST389126 - tricolore

<p>Mère <u>TALI</u> 2002-01-13 (F) LOI LO0275459 - tricolore</p> 	<p><u>NERO</u> 1997-03-29 (M) LOI LO9817889 (Ch T, Ch GQ) - bluebelton</p> 	<p><u>GUFO DI VAL DI CHIANA</u> 1994-04-01 (M) LOI ST514177 (Ch GQ) - bluebelton</p> 	<p><u>NEGUS</u> 1988-09-05 (M) LOI ST382982 (Camp. Tr. (Ch GQ), Camp. Int. Lav (Ch I T)) - bluebelton</p>
	<p><u>SHIFFER</u> 1996-07-13 (F) LOI ST547867 - bluebelton</p>	<p><u>KELLI</u> 1992-06-18 (F) LOI ST466220 - bluebelton</p> 	<p><u>BRUNA</u> 1985-01-01 (F) LOI ST299858 (Ch L Ch Int) - bluebelton</p>
		<p><u>FRANCINI'S ROCKY</u> 1989-02-25 (M) LOI ST409893 (Ch. Int. Lav., Ch. Ital. Lav.) - bluebelton</p> 	<p><u>FRANCINI'S ASTON</u> 1986-01-19 (M) LOI ST325293 (Camp. Ripr., Ch. Int. Lav., Ch. Ital. Lav.) - bluebelton</p>
		<p><u>FRANCINI'S BRIGITTE</u> 1994-03-01 (F) LOI ST501610 - tricolore</p>	<p><u>FRANCINI'S ODETTTE</u> 1984-10-26 (F) LOI ST301903 (Camp. Ripr.) - bluebelton</p>
			<p><u>FRANCINI'S LUCA</u> 1989-07-08 (M) LOI ST404483 (Ch. Ital. Lav., CH GQ, Ch. Int. Lav., Camp. Ripr.) - tricolore</p> 
			<p><u>CORA</u> 1989-02-10 (F) LOI ST392511 - bluebelton</p>

Eleveur : Setter leioandi Iñaki basañez
Campeon de la copa de Andalucia
Sang italien (estimation) : 100 %
Estimation des points au pédigrée : 31

Taux de consanguinité (estimation) : 2.2 %

DECOR LOT (6,6,6,6,6,6,6,6,7 X 5) : 0.009277
DUN DEL MESCHIO (7,7,7,7,7,7,8,8,8,8,8,8,8,8 X 6,7,7,8) : 0.004974
FRANCINI'S LUCA (5 X 4) : 0.003906
LEM DEL RESEGONE (7,8,8 X 6,7,7,7,7,8) : 0.001373
LEM DEL DIANELLA (6 X 5) : 0.000977
TRUEBA DELLA FAGIANA (8,8,8,8 X 7,8,8,8) : 0.000610
ARTU (8 X 7,7,8,8,8,8,8,8) : 0.000305
LINDO 3 DI CEREÀ (8,8,8,8 X 7) : 0.000244
FRANCINI'S VANITY (7 X 6,6) : 0.000244
VIMON REVEL (8,8 X 8,8,8) : 0.000183
FRANCINI'S PEGGY (8 X 6,7,7) : 0.000122
DICH DI VAL D'IDICE (8,8 X 8) : 0.000061
DAMA 17 (8,8 X 8) : 0.000061



Résultats concours

Lieu	Date	Type	Epreuve	N°	Juge	Conducteur	Qualif.	Pts
ES <u>Andalucia</u>	2014-02-05	Printemps	couple			Francisco Gomez	EXC	28
Total des points <u>Challenge Setter-anglais.fr 2014</u>								28
ES <u>Andalucia</u>	2015-02-22	Gibier Tiré	couple			Francisco Gomez	1 EXC	20
Campeon de copa de Andalucia								
Total des points <u>Challenge Setter-anglais.fr 2015</u>								20
Total des points								48
Coefficients : solo x1, couple x2 / GT x1, GN x2, GS (bécasse, bécassine) x2, GS montagne x3, Printemps x2, Grande Quête x4								



Note : les données ne sont pas garanties. Elles ont été entrées par les membres sans garantie d'exactitude.

