

LIVER

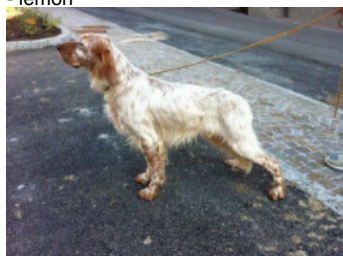
2013-03-12 (M) LOI LO1385030
Couleur : Mar.PBl.Env (liver)



hosted by: setter-anglais.fr

GIBELTARIK FLEMMING 2003-08-23
(M) LOI LO0790204 - lemon

Père
GION DI CROCEDOMINI
2008-01-06 (M)
LOI LO08103087
(Camp. Ripr. (CH))
- lemon



EVA DI CROCEDOMINI 2004-05-01
(F) LOI LO04101913 (Camp. Ital. Lav.) -
bianco nera



RADENTIS COBRA 2000-06-30 (M)
LOI LO0128791 (Camp. Tr. (Ch GQ)) -
lemon



RADENTIS ERICA 1995-05-25 (F)
LOI ST531494 ((CH(I)B)) - lemon



FULL 2002-03-19 (M) LOI
LO02125349 - lemon



HEVELIN DI CROCEDOMINI
2000-06-01 (F) LOI LO00125548 -
bluebelton



LERRY 1997-02-14 (M)
LOI ST555862 (Ch GQ, Ch
IT) - bluebelton



RADENTIS BELLA
1997-01-13 (F) LOI
ST559827 (IT Ch GQ) -
lemon



**RADENTIS
SBRANCO**
1991-07-01 (M) LOI
ST448908 (CH IB, Ch.
Int. Lav.) - lemon



ODE DEL SOLE 1993-09-10 (F) LOI
ST490145 - liver



FIERO 1996-08-10
(M) LOI ST551356
(CHGQ, Ch ITF, Ch IB, Ch
ITT) - lemon



CASSIA 1994-06-19 (F) LOI
ST507935 - lemon











**EQLO DI
CROCEDOMINI**
1990-04-15 (M) LOI
ST417538 - bluebelton



**BIBA DI
CROCEDOMINI**
1997-01-10 (F) LOI
ST557013 - tricolore



<p>Mère</p> <p><u>SILA DI CROCEDOMINI</u> 2010-05-01 (F) LOI LO10121556 - bluebelton</p>	<p><u>HILL DI CROCEDOMINI</u> 2008-03-20 (M) LOI LO08106958 - bluebelton</p> 	<p><u>CLEM</u> 2004-01-03 (M) LOI LO0456911 (Ch. Ital. Lav., Ch. Int. Lav.) - bluebelton</p> 	<p><u>LERRY</u> 1997-02-14 (M) LOI ST555862 (Ch GQ, Ch IT) - bluebelton</p> 
	<p><u>BONA DI CROCEDOMINI</u> 1987-01-01 (F) LOI ST344233 - lemon</p>	<p><u>ALICE DI CROCEDOMINI</u> 2004-03-05 (F) LOI LO04122672 - tricolore</p> 	<p><u>ZIVKA</u> 2000-04-30 (F) LOI LO03129930 (Ch. Ital. Lav.) - lemon</p>
		<p><u>CAPRIOLENSIS TRISS</u> 1978-10-20 (M) LOI ST142619 - tricolore</p>	<p><u>BIBA DI CROCEDOMINI</u> 1997-01-10 (F) LOI ST557013 - tricolore</p> 
		<p><u>ERI DI CROCEDOMINI</u> 1981-03-15 (F) LOI ST227780 - lemon</p> 	<p><u>FRANCINI'S FREEDOM</u> 1973-10-02 (M) LOI ST067468</p>
			<p><u>ELKA</u> 1975-03-31 (F) LOI ST087011</p>
			<p><u>DUM</u> 1978-10-16 (M) LOI ST145043 - bluebelton</p> 
			<p><u>PITTY DEL BREMBO</u> 1977-01-06 (F) LOI ST112356 - lemon</p> 

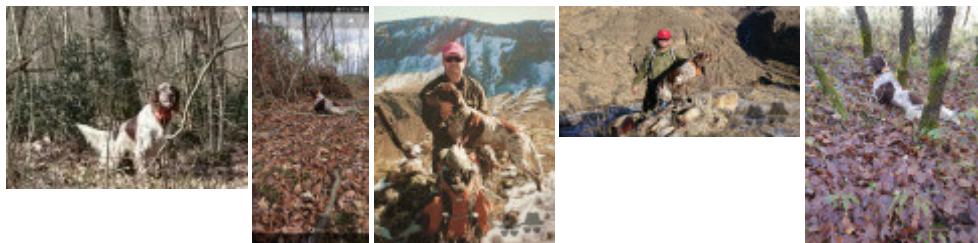
Eleveur : BETTONI ERMES / Propriétaire : ?BRAH?M PARÇAM

Puce : 380260010224243

Estimation des points au pédigrée : 19

Taux de consanguinité (estimation) : 3.7 %

LERRY (4 X 4) : 0.007935
BIBA DI CROCEDOMINI (4 X 4) : 0.007812
DUM (5,7,8,8,8 X 4,8,8) : 0.006470
DECOR LOT (7,7,7,7,7,7,8,8,8,8,8,8,8,8 X 7,7,8,8,8) : 0.003723
RADENTIS GIAN (6,6,6,6,7,7 X 6) : 0.002441
ARNO (5,5 X 5) : 0.001953
CAPRIOLENSIS TRISS (7 X 3) : 0.001953
ERI DI CROCEDOMINI (7 X 3) : 0.001953
LEM DEL RESEGONE (6,7,8,8 X 5,8) : 0.000946
DUN DEL MESCHIO (7,8,8,8,8,8,8 X 8,8,8) : 0.000702
DERK (8 X 5) : 0.000244
VAVA DEL TIDONE (8,8 X 7,8,8,8) : 0.000244
KROL DI CROCEDOMINI (6,7 X 7) : 0.000244
PINO DI CEREÀ (8 X 5) : 0.000244
AMBRA DEL DIANELLA (7,8 X 8,8) : 0.000122
EMO DELLA TRAPPOLA (7 X 7,7) : 0.000122
FLAY DEL DIANELLA (7 X 7,7) : 0.000122
HALOA DELLA VECCHIA IRLANDA (7,7,8 X 7,8) : 0.000061
BONOE (8 X 8,8) : 0.000031



Note : les données ne sont pas garanties. Elles ont été entrées par les membres sans garantie d'exactitude.