

VLAD DI VAL DI CHIANA

2015-07-01 (M) LOI LO15138170
Couleur : Blanco y negro (bluebelton)
[fiche affixe](#)



Père
PICASSO
2007-07-02 (M)
LOI LO0864657
(Camp. Soc., CH GQ, Camp. Ripr., Ch. Int. Lav.)
- bluebelton



KAPO' 2003-11-10 (M) LOI
LO0439835 (CH GQ, CH IT) - bluebelton



ASIA 2003-07-08 (F) LOI
LO03125315 - bluebelton



NERO 1997-03-29 (M) LOI
LO9817889 (Ch T, Ch GQ) - bluebelton



KYBA 1998-01-01 (F) LOI
LO98118951 - lemon

RADENTIS NOMAR 1998-03-22 (M)
LOI LO98133353 ((CHGQ CHITF /
CHIT.B)) - liver



ALA 2001-04-30 (F) LOI LO01153556
- bluebelton



GUFO DI VAL DI CHIANA
1994-04-01 (M) LOI
ST514177 (Ch GQ) -
bluebelton



KELLI 1992-06-18 (F)
LOI ST466220 -
bluebelton

VANGOGH DELL'AD MONTES
1992-07-30 (M) LOI ST463291 (Camp.
Ripr.) - bluebelton

SARA 1989-04-30 (F) LOI ST395811 -
bluebelton



**RADENTIS
SBRANCO**
1991-07-01 (M) LOI
ST448908 (CH IB, Ch.
Int. Lav.) - lemon









**KELLI DELLA
MARIKA** 1995-08-06
(F) LOI ST530204 (Ch.
Ital. Lav.) - bluebelton



FRANCINI'S JEFFE
1993-04-03 (M) LOI
ST479317 (Ch. Ital. Lav.,
Ch. Int. Lav., Camp. Ripr.) -
bluebelton

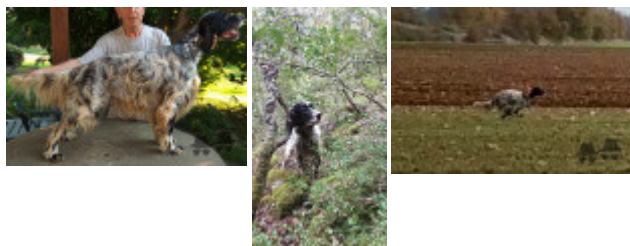
MERY 1999-05-29 (F) LOI
LO99173799 - bluebelton

<p>Mère VETTA DI VAL DI CHIANA 2010-09-28 (F) LOI LO10200325 - bluebelton</p>	<p>VEGA 2005-11-14 (M) LOI LO0669697 (Ch GQ) - lemon</p> 	<p>MARTIANISIUM LUTER 2001-05-05 (M) LOI LO01138037 (CH GQ (Camp. Tr.)) - bluebelton</p> 	<p>NERO 1997-03-29 (M) LOI LO9817889 (Ch T, Ch GQ) - bluebelton</p> 	
			<p>MARTIANISIUM FRINA 2002-01-22 (F) LOI LO0247253 (Camp. Ripr.) - bluebelton</p>	<p>VERA 1999-01-10 (F) LOI LO99132319 - bluebelton</p>
			<p>MARTIANISIUM DRINA 2000-12-08 (F) LOI LO0167926 - bluebelton</p>	<p>MICO DEL MUGNONE 1996-04-21 (M) LOI ST544163 - bluebelton</p>
				<p>MARTIANISIUM DRINA 2000-12-08 (F) LOI LO0167926 - bluebelton</p>
	<p>ZAIRA DI VAL DI CHIANA 2008-03-20 (F) LOI LO0926101 - bluebelton</p>	<p>KAPO' 2003-11-10 (M) LOI LO0439835 (CH GQ, CH IT) - bluebelton</p> 	<p>NERO 1997-03-29 (M) LOI LO9817889 (Ch T, Ch GQ) - bluebelton</p> 	
		<p>SARA 2001-06-03 (F) LOI LO01155872 - tricolore</p>	<p>KYBA 1998-01-01 (F) LOI LO98118951 - lemon</p>	
			<p>TARO DEI FELINI 1994-05-26 (M) LOI ST506181 (Ch Italie T, Ch IT T, Camp. Tr. (Ch GQ)) - tricolore</p> 	
			<p>EMI 1998-09-01 (F) LOI LO9958199 - bluebelton</p>	

Eleveur : Leonardo Bischi / Propriétaire : DEL BAJO SAGUALES (0034 650036837)
Puce : 380260100207812
Estimation des points au pédigrée : 37

Taux de consanguinité (estimation) : 10.6 %

KAPO (2 X 3) : 0.063599
NERO (3 X 4,4,5) : 0.023529
NEGUS (5,7 X 5,6,6,6,7,7) : 0.004883
VANGOGH DELL'AD MONTES (4 X 5,6,7) : 0.003044
FRANCINI'S LUCA (5,6 X 6,6) : 0.002930
DECOR LOT (6,7,7,7,7,8,8 X 7,7,7,8,8) : 0.002747
LEM DEL RESEGONE (6,7,7,8,8,8,8,8,8 X 7,8,8,8) : 0.001160
FRANCINI'S SALLY (5 X 6) : 0.001038
DUN DEL MESHIO (7,8,8,8,8,8,8 X 8,8,8,8) : 0.000702
DEM (6,7,7 X 7,7,8) : 0.000488
MERA DELL'ORSONE (6,7,8,8,8 X 7,8) : 0.000336
LEM DEL DIANELLA (6,8 X 6,7,7,7,7,8,8) : 0.000305
RALF DEL DIANELLA (5,7,7 X 6,8,8,8) : 0.000305
OLAF DEL TRE PONTI (6 X 7,7) : 0.000244
ROVAL MOZART (7 X 6) : 0.000244
FRANCINI'S VANITY (7,7,8 X 8,8,8) : 0.000214
FRANCINI'S PEGGY (7,8,8 X 8,8) : 0.000122



Note : les données ne sont pas garanties. Elles ont été entrées par les membres sans garantie d'exactitude.