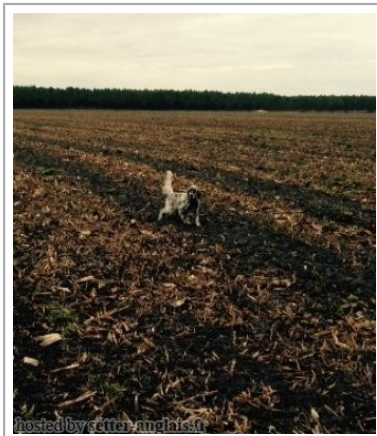
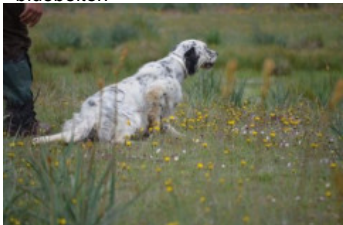



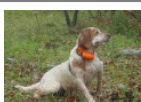












**JULY DES TUCS LANDAIS**

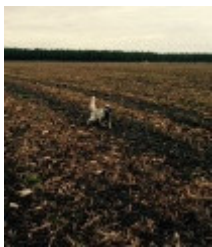
2014-07-01 (F) LOF 235364/47952

Couleur : Noi.PBl.Env (bluebelton) / Titres : TAN / Dyspl. : B  
[fiche affixe](#)

<p>Père <b>MARC DEL FAENOR NI</b> 2012-10-01 (M) LOE 2141505 (CH IT GQ) - bluebelton</p> 	<p><b>MARK</b> 2011-06-14 (M) LOI LO11112072 (Tr GQ) - bluebelton</p>	<p><b>ROONEY DEL SARGIADAE</b> 2004-06-11 (M) LOI LO04120540 (Ch GQ, Camp. Ital. Assol., Camp. Ital. Lav., Camp. Int. Lav.) - bluebelton</p> 	<p><b>BIG JIM</b> 2000-12-01 (M) LOI LO0188207 (CH GQ, Ch. Int. Lav., Camp. Ripr., Ch. Ital. Lav.) - liver</p> 
<p><b>SIMBA DEL FAENOR NI dite TACA</b> 2008-10-29 (F) LOE 1865076 (Tr becadas) - MARRÓN/BLANCO</p> 	<p><b>HELI</b> 2008-09-15 (F) LOI LO0991918 - tricolore</p>	<p><b>CASSIA</b> 2002-03-19 (F) LOI LO02125347 - lemon</p> 	<p><b>TODAY</b> 2001-05-07 (M) LOI LO01146212 (Camp. Tr. (Ch GQ)) - bluebelton</p> 
<p><b>ZIP DEL FORTE DEGENFELD</b> 2005-02-16 (M) LOI LO0555816 - lemon</p>	<p><b>STELLA DI RICCAGIOIA</b> 2000-11-01 (F) LOI LO0154693 (Camp. Ripr.) - tricolore</p>	<p><b>ZAR</b> 1998-05-13 (M) LOI LO98150777 (CHT(I.)) - bluebelton</p>	<p><b>GIOIA DEL FORTE DEGENFELD</b> 2003-05-26 (F) LOI LO0383349 (Camp. Ripr.) - liver</p>
<p><b>JELY DE LA ARMUÑA</b> (F) LOE 1508452</p>	<p><b>TITO</b> 1998-06-08 (M) LOE 1109111 (TrGB(E.02)) - lemon</p> 	<p><b>COCA DE LA ARMUÑA</b> (F) LOE 1061526</p> 	

<p>Mère</p> <p><u>FROU FROU DES TUCS LANDAIS</u> 2010-02-12 (F) LOF 213776/41889 (TAN) - liver</p>	<p><u>ANCO DES PICS LUCHONNAIS</u> 2005-03-23 (M) LOF 180084/29512 - bluebelton</p>	<p><u>PORTO dit PRINCE</u> 1999-06-17 (M) LOF 149950/25648 (TR CHA CHITF) - bluebelton</p> 	<p><u>IXOR DES BERGES DE LA GÉLINE</u> 1993-06-20 (M) LOF 120189/20273 (Tr GQ) - bluebelton</p>	
	<p><u>ZULU DI VAL DI CHIANA</u> 2008-03-20 (F) LOF 213399/40792 - bluebelton</p> 	<p><u>TESSIE DES BERGES DE LA GÉLINE</u> 2002-07-20 (F) LOF 168425/32312 (TR) - liver</p> 	<p><u>BRUGGE DEL SOLE</u> 1992-05-24 (M) LOI ST465125 (Ch P, Tr GQ) - liver</p> 	<p><u>RACINE DES BERGES DE LA GÉLINE</u> 2000-10-13 (F) LOF 157877/29873 - bluebelton</p>
		<p><u>KAPO</u> 2003-11-10 (M) LOI LO0439835 (Ch IT GQ) - bluebelton</p> 	<p><u>NERO</u> 1997-03-29 (M) LOI LO9817889 (Ch T, Ch GQ) - bluebelton</p> 	<p><u>KYBA</u> 1998-01-01 (F) LOI LO98118951 - lemon</p>
		<p><u>SARA</u> 2001-06-03 (F) LOI LO01155872 - tricolore</p>	<p><u>TARO DEI FELINI</u> 1994-05-26 (M) LOI ST506181 (Ch Italie T, Ch IT T, Camp. Tr. (Ch GQ)) - tricolore</p> 	<p><u>EMI</u> 1998-09-01 (F) LOI LO9958199 - bluebelton</p>

Eleveur : Yves TASTET / Propriétaire : Guy LATAPY (0785597661)  
Cotation : 1  
Puce : 250268711157424  
Sang italien (estimation) : 95 %  
Estimation des points au pédigrée : 26



Note : les données ne sont pas garanties. Elles ont été entrées par les membres sans garantie d'exactitude.

