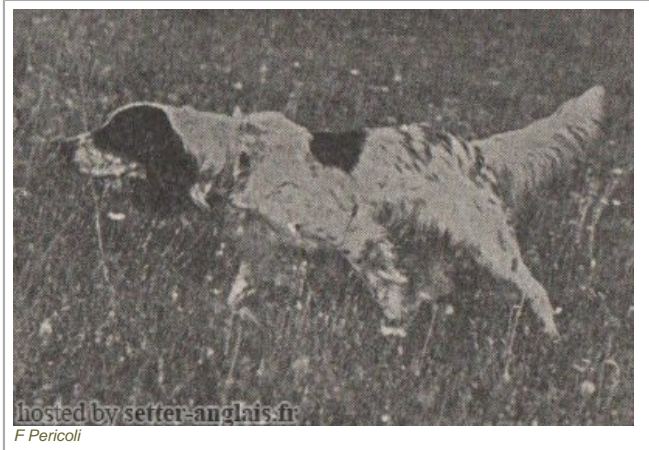








**CRISMANI BUCK**

1954-06-28 (M) LOI 1684.54  
Couleur : Noi.Mar.Fau.PBl.Env (tricolore) / Titres : Ch L  
[fiche affixe](#)



hosted by pedigree.setter-anglais.fr  
F Pericoli

<p>Père <a href="#">TELL 68</a> 1945-07-18 (M) LOI 60430.48 (Ch L Ch IT) - bluebelton</p> 	<p><a href="#">DERO 14</a> 1941 (M) LOI 29536.41</p>	<p><a href="#">DICK DEL LIDO</a> (M) LOI 14815</p>	<p><a href="#">WEST DOWN GOND</a> 1930-02-22 (M) KCSB1989MM - brown roan and white</p>
	<p><a href="#">DEA 35</a> 1940 (F) LOI 28574.40</p>	<p><a href="#">DEA 35</a> 1940 (F) LOI 28574.40</p>	<p><a href="#">NANETTE DELLA SPIA</a> (F) LOI 6417</p> <p><a href="#">DEN</a> (M) LOI</p> <p><a href="#">DOLLY 6</a> (F) LOI</p>
<p>Mère <a href="#">QUES DELLE MORENE</a> 1947-09-07 (F) LOI</p> 	<p><a href="#">LEO DELLA ZARA</a> 1940-11-15 (M) LOI 29564.41 - lemon</p>	<p><a href="#">FELIX DEL ROVERE</a> 1933-04-22 (M) LOI 11703.33 (Ch L) - bluebelton</p>	<p> <a href="#">STYLISH TURVY</a> 1927-03-30 (M) KCSB409LL-KCI9134 - bluebelton</p> <p> <a href="#">NICE STYLE STAAR</a> 1929-04-17 (F) LOI 7670.29 (Ch T) - lemon</p>
	<p><a href="#">ALA 28°</a> (F) LOI</p>	<p><a href="#">NEDDA DEL ROVERE</a> 1939-04-04 (F) LOI 24664.40 - bluebelton</p> 	<p><a href="#">FRAM DEL ROVERE</a> 1933-04-22 (M) LOI 11700.33 - bluebelton</p> <p><a href="#">PERLA 3</a> (F) LOI</p>
		<p><a href="#">PAN 2</a> (M) LOI</p>	<p> <a href="#">VANE DI SAN PATRICK</a> 1932-01-17 (M) LOI 10109.32 - bluebelton</p> <p><a href="#">ARTEMIS</a> (F) LOI ST13042.34</p>
		<p><a href="#">EVA 8</a> (F) LOI</p>	<p><a href="#">FRITZ 6</a> (M) LOI</p> <p><a href="#">MARLENE 2</a> (F) LOI</p>

Estimation des points au pédigrée : 26



Note : les données ne sont pas garanties. Elles ont été entrées par les membres sans garantie d'exactitude.