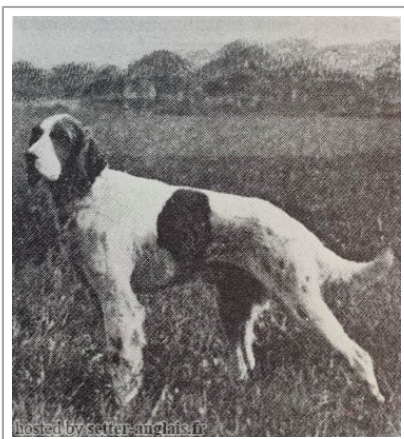





COUNT BONDHU

1950-01-06 (M) KCSB538AJ
Couleur : Mar.PBl.Env (liver)
[fiche affixe](#)



Père CANNON BONDHU 1948-01-09 (M) KCSB404AG (F T CH) - liver 	YANKEE BONDHU 1942-03-23 (M) KCSB1592AF (Ch T) - bluebelton	NYDIUS 1934 (M) LOI	PICKWICK (M) HORSFORD COUNTESS DIME 1932 (F)
	HORSFORD DASHING DESTINE (F) KCSB2849CG	HORSFORD KITTY WIND'EM 1933-08-10 (F) AKCA11441 - tricolore	HIGHTONE TONY 1925-11-06 (M) FDSB134108@ (Am. Ch.) - bluebelton PALIACHO'S JESSIE B 1925-08-03 (F) FDSB.139885 - bluebelton
Mère MARIE WIND'EM 1941 (F) KCR10261/49 - lemon	HORSFORD COUNT DAVE (M) FDSB-241528	HORSFORD DASHING DAN 1934-02-22 (M) KCSB1137RR - bluebelton	HORSFORD DASHING VISCOUNT 1927-05-06 (M) FDSB241277 HORSFORD DASHING DUCHESS (F) FDSB241278
	BONNIE WIND'EM (F)	SILK BONDHU (F)	SPECK BONDHU (M) HORSFORD DASHING DALEY 1934-02-22 (F)
	HORSFORD COUNTESS DOLE (F) FDSB241527	DAN WIND'EM 1924-09-06 (M) FDSB241264-KCSB480GG 	TAMBOURINE 1921-07-26 (M) FDSB57849 PEGGY WINDEM A.K.A. HORSFORD COUNTESS MACCA (F)
	HORSFORD COUNTESS DOT (F) FDSB241600	ROB'S MOHAWK BOY (M) FDSB186574	GOLD DIGGER (M) MISS PANSY (F) RODNEY'S DON WIND'EM 1924-04-10 (M) FDSB125046 - bluebelton PALIACHO'S JESSIE B 1925-08-03 (F) FDSB.139885 - bluebelton  DAN WIND'EM 1924-09-06 (M) FDSB241264-KCSB480GG HORSFORD COUNTESS GABY (F) LOI FDSB241320

Sang italien (estimation) : 12 %
Estimation des points au pédigrée : 12

Taux de consanguinité (estimation) : 1.3 %

PALIACHO'S JESSIE B (4 X 4) : 0.008057
HORSFORD COUNTESS GABY (5 X 4) : 0.003906
GILL (8 X 5,6) : 0.000366
DRAKE WINDEM A.K.A. WILLOW BROOK DRAKE WIND'EM (8 X 5,6) : 0.000366
TONY BOY A.K.A. ROY WINDEM (7,8 X 8) : 0.000092
LADY'S COUNT GLADSTONE (8,8 X 8) : 0.000061
MOHAWK II (7,8 X 8) : 0.000061
FREE LANCE (8,8 X 8) : 0.000031





Note : les données ne sont pas garanties. Elles ont été entrées par les membres sans garantie d'exactitude.