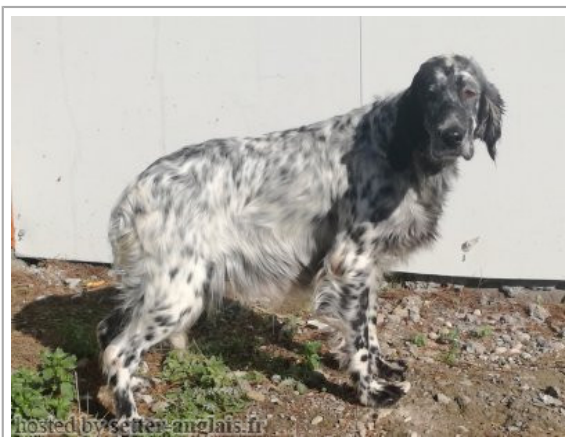
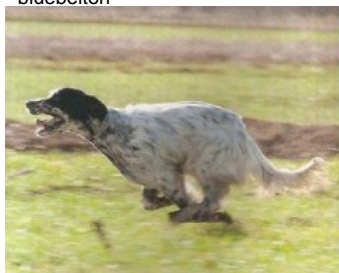


RAMENSIS EVA

2012-08-08 (F) BEK 118528
Couleur : BIANCO NERO (bluebelton)
[fiche affixe](#)



Père
PICASSO
2007-07-02 (M)
LOI LO0864657
(Camp. Soc., CH GQ, Camp. Ripr., Ch. Int. Lav.)
- bluebelton



KAPO' 2003-11-10 (M) LOI
LO0439835 (Ch IT GQ) - bluebelton



ASIA 2003-07-08 (F) LOI
LO03125315 - bluebelton



NERO 1997-03-29 (M) LOI
LO9817889 (Ch T, Ch GQ) - bluebelton



KYBA 1998-01-01 (F) LOI
LO98118951 - lemon



ALA 2001-04-30 (F) LOI LO01153556
- bluebelton

GUFO DI VAL DI CHIANA
1994-04-01 (M) LOI
ST514177 (Ch GQ) - bluebelton



KELLI 1992-06-18 (F)
LOI ST466220 - bluebelton



VANGOGH DELL'AD MONTES
1992-07-30 (M) LOI ST463291 (Camp. Ripr.) - bluebelton

SARA 1989-04-30 (F) LOI ST395811 - bluebelton



RADENTIS SBRANCO
1991-07-01 (M) LOI
ST448908 (CH IB, Ch. Int. Lav.) - lemon







KELLI DELLA MARIKA 1995-08-06
(F) LOI ST530204 (Ch. Ital. Lav.) - bluebelton

FRANCINI'S JEFF
1993-04-03 (M) LOI
ST479317 (Ch. Ital. Lav., Ch. Int. Lav., Camp. Ripr.) - bluebelton



MERY 1999-05-29 (F) LOI
LO99173799 - bluebelton

<p>Mère</p> <p>RAMENSIS BONA 2009-04-12 (F) BEK 087057 - bluebelton</p>	<p>KURT 2002-03-20 (M) LOI LO02108880 (Ch. Ital. Lav., Camp. Ripr.) - bluebelton</p> 	<p>TARO DEI FELINI 1994-05-26 (M) LOI ST506181 (Ch Italie T, Ch IT T, Camp. Tr. (Ch GQ)) - tricolore</p> 	<p>NEGUS 1988-09-05 (M) LOI ST382982 (Camp. Tr. (Ch GQ), Camp. Int. Lav (Ch I T)) - bluebelton</p>
	<p>BUJA DI VAL DI CHIANA 2006-08-12 (F) BEK 073265 - tricolore</p> 	<p>BORA DI VAL DI CHIANA 2000-08-15 (F) LOI LO0125547 - bluebelton</p>	<p>NERO 1997-03-29 (M) LOI LO9817889 (Ch T, Ch GQ) - bluebelton</p> 
		<p>PENNY DI VAL DI CHIANA 2001-04-23 (F) LOI LO01154267 - tricolore</p>	<p>BIRBA 1992-04-23 (F) LOI ST462852 - bluebelton</p>
			<p>GUFO DI VAL DI CHIANA 1994-04-01 (M) LOI ST514177 (Ch GQ) - bluebelton</p>
			<p>GUFO DI VAL DI CHIANA 1994-04-01 (M) LOI ST514177 (Ch GQ) - bluebelton</p>
			<p>KELLI 1992-06-18 (F) LOI ST466220 - bluebelton</p>
			<p>TARO DEI FELINI 1994-05-26 (M) LOI ST506181 (Ch Italie T, Ch IT T, Camp. Tr. (Ch GQ)) - tricolore</p>
			<p>CERA DI VAL DI CHIANA 1993-10-02 (F) LOI ST494485 - tricolore</p>

[[Lien...](#)] / Eleveur : NIKOLAOU NIKOS / Propriétaire : NIKOLAOU NIKOS (ramensis@gmail.com)

Puce : 941000017134318

Sang italien (estimation) : 100 %

Estimation des points au pédigrée : 33

Taux de consanguinité (estimation) : 6.2 %

NERO (3 X 3) : 0.031372

NEGUS (5,7 X 4,5,5,5,5) : 0.010742

GUFO DI VAL DI CHIANA (4 X 4,4) : 0.007812

LEM DEL RESEGONE (6,7,7,8,8,8,8,8,8 X 7,7,8,8,8,8,8,8) : 0.004517

DUN DEL MESCHIO (7,8,8,8,8,8,8 X 7,7,8,8,8,8,8,8,8) : 0.002533

DECOR LOT (6,7,7,7,7,8,8 X 6,7) : 0.002075

DEM (6,7,7 X 7,8) : 0.000732

RALF DEL DIANELLA (5,7,7 X 7) : 0.000610

FRANCINI'S RAS (6 X 6) : 0.000488

MERA DELL ORSONE (6,7,8,8,8 X 8,8) : 0.000366

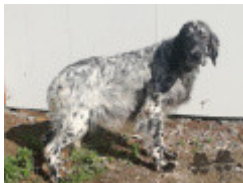
FRANCINI'S VANITY (7,7,8 X 7,8) : 0.000336

FRANCINI'S PEGGY (7,8,8 X 7,7,8) : 0.000305

ARTU (8,8,8 X 8,8) : 0.000122

FRANCINI'S LINDA (8 X 7,7,8,8,8,8) : 0.000061

CRISMANI OLAF (8 X 8,8,8) : 0.000031



Note : les données ne sont pas garanties. Elles ont été entrées par les membres sans garantie d'exactitude.

