

**LAKY DES TERRES DE LUDE**

2015-06-02 (M) LOF 239800/41254

Color: Noi. Mar.Fau. PBl.Env.Mou. (tricolore) / Qualifications: TAN, Tr GQ / Dyspl.: A  
Kenel

RADENTIS CRISS 2000-06-30 (M) LOI  
LO0128798 - lemon



Radentis CRISS - 8 febbraio

Father  
RADENTIS HAMI 2008-05-09 (M) LOI  
LO0940971 - lemon



RADENTIS VIENNA II 2006-04-11 (F)  
LOI LO06118383 - bluebelton

LERRY 1997-02-14 (M) LOI ST555862  
(Ch GQ, Ch IT) - bluebelton



RADENTIS BELLA 1997-01-13 (F) LOI  
ST559827 (IT Ch GQ) - lemon



RADENTIS NOMAR 1998-03-22 (M)  
LOI LO98133353 ((CHGQ CHITF / CHIT.B))  
- liver



AMBRA 2004-07-21 (F) LOI  
LO0519780 - bluebelton

ARNO 1988-04-17 (M) LOI ST374735  
(Ch. Int. Lav., Camp. Ripr., Ch. Ital. Lav.) -  
lemon



PICENUM UNGA 1990-10-02 (F) LOI  
ST430406 (CH GQ) - liver



RADENTIS SBRANCO 1991-07-01 (M)  
LOI ST448908 (CH IB, Ch. Int. Lav.) - lemon



ODE DEL SOLE 1993-09-10 (F) LOI  
ST490145 - liver

RADENTIS SBRANCO 1991-07-01 (M)  
LOI ST448908 (CH IB, Ch. Int. Lav.) - lemon



KELLI DELLA MARIKA 1995-08-06 (F)  
LOI ST530204 (Ch. Ital. Lav.) - bluebelton



RADENTIS BOSS 1997-01-13 (M) LOI  
ST559823 - lemon



FRANCINI'S MAILA 2002-01-12 (F) LOI  
LO0285778 - bluebelton

BRANDY DU MAS D'EYRAUD  
2006-06-24 (M) LOF 189666/30874  
(CHA TR CHP CH.T.) - bluebelton



Mother  
IFNI DES TERRES DE LUDE  
2013-07-19 (F) LOF 230284/46312 (TR  
GQ) - bluebelton



VAD DU MAS D'EYRAUD 2004-05-22  
(M) LOF 176886/28894 (TR GQ) - lemon



RADENTIS BILLO 2001-10-25 (M) LOE  
1376724 (Ch GQ) - lemon



ROSENN DU MAS D'EYRAUD  
2000-05-29 (F) LOF 154091/28767 (Ch  
GQ) - lemon



RADENTIS COBRA 2000-06-30 (M)  
LOI LO0128791 (Camp. Tr. (Ch GQ)) -  
lemon



RADENTIS GLORY 2003-05-22 (F)  
LOF 176227/32584 - bluebelton



GEIN 2001-07-15 (F) LOI LO01193269  
- tricolore



RAUL DE LA MUNIA 2000-08-15 (M)  
LOF 157086/25614 (TR, CH A, CH P, CH T)  
- lemon



BOY DES COLLINES DE L'IZARS  
2006-03-23 (M) LOF 186771/30733 (TR,  
CH T, CH GQ) - tricolore



RHEA DE CAZAOUS 2000-05-21 (F)  
LOF 153948/28734 (TR, CH A) -  
bluebelton



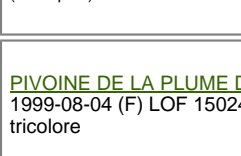
D'IAMS DES COLLINES DE L'IZARS  
2008-11-12 (F) LOF 201320/40496 (TR)  
- bluebelton



VESPA DE LA PLUME DU PÉVÈLE  
2004-10-09 (F) LOF 178709/34641 -  
tricolore



UN CAS DE LA PLUME DU PÉVÈLE  
2003-06-05 (M) LOF 171947/28026  
(Champion) - bluebelton

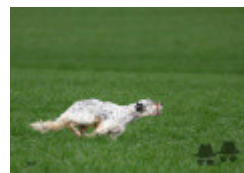
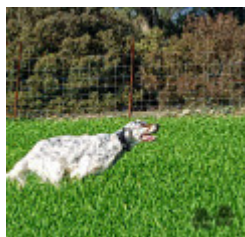


PIVOINE DE LA PLUME DU PÉVÈLE  
1999-08-04 (F) LOF 150246/28109 -  
tricolore

Breeder: Luc Durand / Owner: Max Ambert  
ADN=compatible Mother.  
Chip : 250268712339170  
DNA deposit  
Italian breeding (estimated): 91%  
Points in pedigree: 41

**Estimated coefficient of inbreeding: 5.9 %**

RADENTIS SBRANCO (4,4,5 X 5,6,6) : 0.018677  
RADENTIS BELLA (3 X 5) : 0.008224  
LERRY (3 X 5) : 0.007950  
DECOR LOT (7,7,7,7,7,7,7,7,8,8,8,8,8 X 7,7,7,8,8,8,8,8,8) : 0.006561  
RADENTIS BORG (5,5,5,6 X 6,6,7,7) : 0.005371  
ARNO (4 X 6,6,6) : 0.003906  
RADENTIS GIAN (6,6,6,6,7,7 X 7,7,7,7,8,8,8) : 0.003723  
ODE DEL SOLE (4,5 X 6) : 0.001007  
DUN DEL MESHIO (7,8,8,8,8,8,8,8,8,8,8 X 8,8) : 0.000610  
FRANCINI'S JEFF (5 X 7) : 0.000504  
ROVAL MOZART (7 X 6,6) : 0.000488  
ATOS DELLE TORRICELLE (6,7 X 7,8) : 0.000366  
DEM (7,7,7 X 7) : 0.000366  
RADENTIS DIDO (6,6,7 X 7,8,8,8) : 0.000305  
ORFEO DELLA TRAPPOLA (7 X 7,7) : 0.000244  
STAR (5 X 7,8) : 0.000244  
LEM DEL RESEGONE (8,8,8 X 8,8) : 0.000183  
HALOA DELLA VECCHIA IRLANDA (6,7 X 8,8,8) : 0.000122  
FRANCINI'S LUCA (6,6 X 8) : 0.000122  
MUR (8 X 8,8) : 0.000061



Note: data are entered by members. There is no guarantee about accuracy of data.