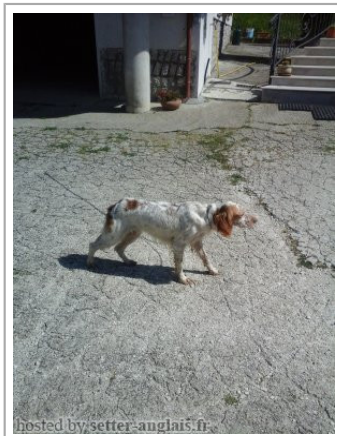


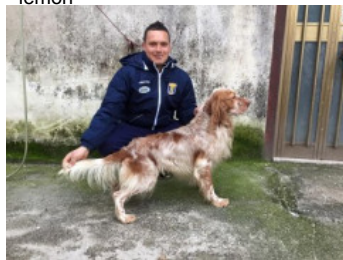
ADIR

2015-06-28 (M) LOI LO15139540
Couleur : bianco arancio (lemon)



hosted by: setter-anglais.fr

Père
BARBA NERA
2011-10-24 (M)
LOI LO11162789
- lemon



RULLO DELLA VECCHIA IRLANDA
2005-06-10 (M) LOI LO05108741 - lemon



KIRA 2007-08-01 (F) LOI LO0870021
- lemon

RADENTIS ZUM 2002-07-08 (M) LOI LO02161851 (Camp. Tr. (Ch GQ), Camp. Int. Lav., Camp. Ital. Lav.) - lemon



GIBELTARIK BLONDIE 2000-12-11 (F) LOI LO02122551 (CHIT.T) - lemon



RADENTIS NOMAR 1998-03-22 (M) LOI LO98133353 ((CHGQ CHITF / CHIT.B)) - liver



LAIKA 2001-05-22 (F) LOI LO01137037 - lemon



FIERO 1996-08-10 (M) LOI ST551356 (CHGQ, Ch ITF, Ch IB, Ch ITT) - lemon



GIBELTARIK BLONDIE
2000-12-11 (F) LOI LO02122551 (CHIT.T) - lemon

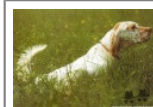


bluebelton

DODGE DEL TIRSO 1998-02-14 (M) LOI LO9942918 (Ch IT IT-T, CHIB, Camp. Tr. (Ch GQ)) -



RADENTIS ERICA
1995-05-25 (F) LOI ST531494 ((CH(I)B)) - lemon



RADENTIS SBRANCO
1991-07-01 (M) LOI ST448908 (CH IB, Ch. Int. Lav.) - lemon



KELLI DELLA MARIKA 1995-08-06 (F) LOI ST530204 (Ch. Ital. Lav.) - bluebelton



RADENTIS SBRANCO
1991-07-01 (M) LOI ST448908 (CH IB, Ch. Int. Lav.) - lemon

ARA 1998-11-21 (F) LOI LO9987308 - bluebelton

| | | | |
|---|--|--|--|
| <p>Mère <u>TARTALKY'S VASKA</u> 2008-04-19 (F) LOI LO0924878 - lemon</p>  | <p><u>TARTALKY'S KABUL</u> 2006-01-27 (M) LOI LO06105626 - lemon</p>  | <p><u>ZAR</u> 2002-04-19 (M) LOI LO02105936 - lemon</p> | <p><u>ASTRO</u> 1994-01-10 (M) LOI ST494869 - lemon</p> |
| | <p><u>TARTALKY'S ELBA</u> 2004-11-09 (F) LOI LO0552701 - lemon</p> | <p><u>CUNA</u> 2002-05-29 (F) LOI LO02116548 - lemon</p> | <p><u>BIG JIM</u> 2000-12-01 (M) LOI LO0188207 (Ch GQ, Ch. Int. Lav., Camp. Ripr., Ch. Ital. Lav.) - liver</p>  |
| | | <p><u>TOCE</u> 2001-03-13 (F) LOI LO01119681 - liver tricolore</p> | <p><u>CHIM</u> 1998-02-12 (M) LOI LO98111160 - lemon</p> |
| | | | <p><u>CORI</u> 1996-01-12 (F) LOI ST538999 - lemon</p> |
| | | | <p><u>LERRY</u> 1997-02-14 (M) LOI ST555862 (Ch GQ, Ch IT) - bluebelton</p>  |
| | | | <p><u>RADENTIS TANGA</u> 1998-09-15 (F) LOI LO9958147 - lemon</p>  |
| | | | <p><u>DEM BELLA DALMATINSKA</u> 1998-05-04 (M) LOI LO0185742 (Ch. Ital. Lav., Camp. Ripr., Ch. Int. Lav.) - bluebelton</p>  |
| | | | <p><u>MELLA</u> 1995-11-13 (F) LOI ST533978 - BIANCO NERA</p> |

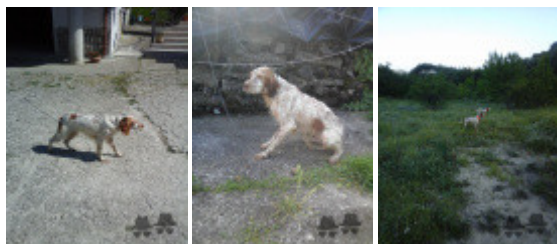
Eleveur : Pirraglia Giovanni / Propriétaire : Pirraglia Giovanni

Puce : 38026004234676

Estimation des points au pédigrée : 11

Taux de consanguinité (estimation) : 5.6 %

RADENTIS SBRANCO (4,4,5,6 X 5,6) : 0.017120
ARNO (5,5 X 5,5,5,6,6) : 0.015625
RADENTIS GIAN (6,6,6,6,7,7,7,7,8,8,8 X 6,6,6,7,7,8) : 0.012634
DECOR LOT (7,7,7,7,7,7,7,7,7,8,8,8,8,8,8,8,8,8 X 7,7,7,8,8,8,8,8) : 0.006836
RADENTIS BORG (5,5,5,6,7 X 6,7) : 0.001465
ROVAL VIENNA (7,7,7,8,8 X 6) : 0.000977
DUN DEL MESHIO (8,8,8,8,8,8,8 X 8,8,8,8) : 0.000488
DITO DEL CAVALDROSSA (7,8 X 7) : 0.000183
HALOA DELLA VECCHIA IRLANDA (7,7 X 7,7,7,8,8,8) : 0.000122
OLAF DEL TRE PONTI (8,8,8 X 7,8) : 0.000092
BERNA (8,8,8,8 X 7) : 0.000061



Note : les données ne sont pas garanties. Elles ont été entrées par les membres sans garantie d'exactitude.