

RADENTIS NOLO

2014-10-08 (M) LOI LO154143
 Couleur : bianco arancio (lemon) / Dyspl. : A
[fiche affixe](#)



Père
RALF
 2006-08-06 (M)
 LOI LO0746390
 (Ch. Int. Lav.)
 - liver

RADENTIS NOMAR 1998-03-22 (M)
 LOI LO98133353 ((CHGQ CHITF /
 CHIT.B)) - liver



RADENTIS SBRANCO 1991-07-01
 (M) LOI ST448908 (CH IB, Ch. Int. Lav.) -
 lemon



KELLI DELLA MARIKA 1995-08-06
 (F) LOI ST530204 (Ch. Ital. Lav.) -
 bluebelton



ARNO 1988-04-17 (M) LOI ST374735
 (Ch. Int. Lav., Camp. Ripr., Ch. Ital. Lav.) -
 lemon



BRUNA 1994-01-08 (F) LOI
 ST493276 - bluebelton

RADENTIS BORG
 1987-04-30 (M) LOI
 ST350267 (Ch. Int.
 Lav., CH GQ, Ch. Ital.
 Lav., Camp. Ripr.) -

lemon

RADENTIS OLA 1984-09-30 (F) LOI
 ST298174 - lemon

RADENTIS BORG
 1987-04-30 (M) LOI
 ST350267 (Ch. Int.
 Lav., CH GQ, Ch. Ital.
 Lav., Camp. Ripr.) -

lemon






ZARA DELLA MARIKA 1993-06-10
 (F) LOI ST482071 - bluebelton

CRISMANI ATOS
 1980-02-01 (M) LOI
 ST208763 (Ch IT) -
 liver

SWING DELLA VECCHIA IRLANDA
 1984-08-01 (F) LOI ST295020 (Ch L) -
 lemon

ROYAL SAUL 1985-06-13 (M) LOI
 ST316068 - bluebelton

GIANA 1987-09-15 (F) LOI ST359451
 - lemon

| | | | |
|---|---|--|---|
| <p>Mère</p> <p>RADENTIS ZETA 2006-04-05 (F) LOI LO0679101 - lemon</p>  | <p>CERRO 2000-04-10 (M) LOI LO0118650 - lemon</p>  | <p>ARNO 1988-04-17 (M) LOI ST374735 (Ch. Int. Lav., Camp. Ripr., Ch. Ital. Lav.) - lemon</p>  | <p>CRISMANI ATOS 1980-02-01 (M) LOI ST208763 (Ch IT) - liver</p> |
| | <p>RADENTIS BELINDA 2001-10-25 (F) LOI LO0230694 - lemon</p>  | <p>RADENTIS ALICE 1995-03-19 (F) LOI ST519851 - tricolore</p> | <p>RADENTIS SBRANCO 1991-07-01 (M) LOI ST448908 (CH IB, Ch. Int. Lav.) - lemon</p>  |
| | | <p>RADENTIS ALA 1994-03-15 (F) LOI ST496649 (Ch T) - lemon</p> | <p>RADENTIS BORG 1987-04-30 (M) LOI ST350267 (Ch. Int. Lav., CH GQ, Ch. Ital. Lav., Camp. Ripr.) - lemon</p> |
| | | | <p>RADENTIS DIVA 1989-01-02 (F) LOI ST389126 - tricolore</p> |
| | | | <p>RADENTIS BORG 1987-04-30 (M) LOI ST350267 (Ch. Int. Lav., CH GQ, Ch. Ital. Lav., Camp. Ripr.) - lemon</p> |
| | | | <p>RADENTIS OLA 1984-09-30 (F) LOI ST298174 - lemon</p> |
| | | | <p>RADENTIS BORG 1987-04-30 (M) LOI ST350267 (Ch. Int. Lav., CH GQ, Ch. Ital. Lav., Camp. Ripr.) - lemon</p> |
| | | | <p>RADENTIS RAISSA 1991-05-30 (F) LOI ST448920 - lemon</p> |

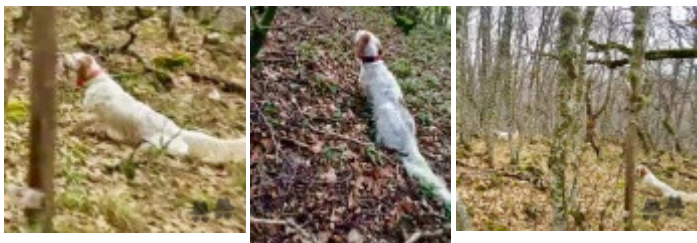
Eleveur : Orlando Fabbri / Propriétaire : Domenico Pardeo (Domenico.pardeo@virgilio.it)

Puce : 380260100102094

Estimation des points au pédigrée : 26

Taux de consanguinité (estimation) : 14.2 %

RADENTIS BORG (4,4 X 4,4,4) : 0.039062
RADENTIS SBRANCO (3 X 3) : 0.033447
ARNO (3 X 3) : 0.031250
DECOR LOT (5,6,6,6,6,6,7 X 6,6,6,6,6,6,7,8,8,8) : 0.015808
RADENTIS GIAN (5,5,5 X 5,5,5,5,7,7) : 0.015564
DUN DEL MESCHIO (6,7,7,7,7,7,7,8,8,8,8,8 X 7,7,7,7,7,8,8,8,8,8,8) : 0.005676
RADENTIS DIDO (5 X 5,6) : 0.000977
LEM DEL RESEGONE (8 X 7,8) : 0.000092
TRUEBA DELLA FAGIANA (8,8,8 X 8,8,8) : 0.000092
DICH DI VAL D'IDICE (8,8,8 X 8) : 0.000061
VIMON REVEL (8,8 X 8) : 0.000031
ARNO IL DI VAL D'IDICE (8 X 8) : 0.000031
DAMA 17 (8,8 X 8) : 0.000031
BRILL 2 DEL ROVERE (8,8 X 8) : 0.000031



Note : les données ne sont pas garanties. Elles ont été entrées par les membres sans garantie d'exactitude.

