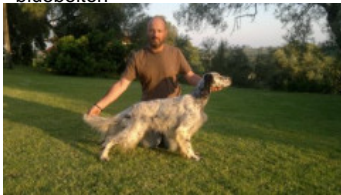

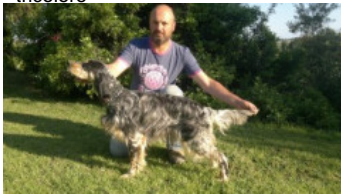







**RAPAKOULIAS GENESIS THEA**

2010-06-18 (F) BEK 098330

Couleur : Tricolore

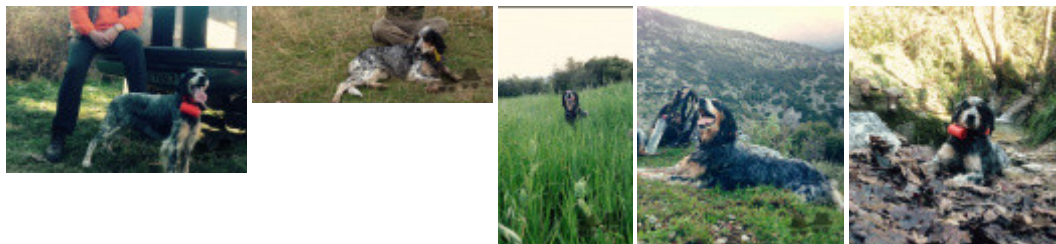
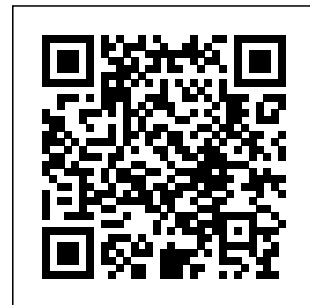
[fiche affixe](#)

<p>Père</p> <p><a href="#">KRIONERIOU MINOAS</a> (M) BEK 052727 - bluebelton</p> 	<p><a href="#">KRIONERIOU DIAS JUNIOR</a> (M) BEK 44845</p>	<p><a href="#">OTELLO DI TORRE MASINO</a> 1999-01-07 (M) LOI LO9984511 - bluebelton</p>	 <p><a href="#">ASPIS</a> 1990-03-05 (M) LOI ST416169 (CH GQ, Camp. Ripr., Ch. Ital. Lav.) - bluebelton</p>	
	<p><a href="#">LICABETTUS OLYMBIA</a> (F) BEK 025874</p>	<p><a href="#">KRIONERIOU HXO</a> (F) BEK 24609</p>	<p><a href="#">LEDDA DEL FALSO</a> 1995-07-15 (F) LOI ST525745 - bluebelton</p>	<p><a href="#">OREKA GARDEN</a> (M) BEK 004747</p>
<p>Mère</p> <p><a href="#">RAPAKOULIAS GENESIS DANAI</a> 2007-03-13 (F) BEK 069472 - tricolore</p> 	<p><a href="#">ARISTOS APOLLONION</a> 1999-10-16 (M) BEA3-09714 - lemon</p> 	<p><a href="#">RADENTIS QUARIS</a> 1991-05-13 (M) BEK 004179 - lemon</p> 	 <p><a href="#">RADENTIS BORG</a> 1987-04-30 (M) LOI ST350267 (Ch. Int. Lav., CH GQ, Ch. Ital. Lav., Camp. Ripr.) - lemon</p>	
	<p><a href="#">MUSE DU MAS D'EYRAUD</a> 1996-05-18 (F) LOF 132835 - bluebelton</p>	<p><a href="#">FRANCINI'S TANGO</a> 1992-09-03 (M) LOF 121652/17341 (CHP CHGQ CHITF TR) - bluebelton</p>	<p><a href="#">SWING DELLA VECCHIA IRLANDA</a> 1984-08-01 (F) LOI ST295020 (Ch L) - lemon</p>	<p><a href="#">ILDA DU MAS D'EYRAUD</a> 1993-09-16 (F) LOF 120373/21702 - tricolore</p>
	<p><a href="#">DIVA FYOSMOS</a> (F) BEK 035119 - tricolore</p>	<p><a href="#">APOLLON</a> (M) 6573</p> 	<p><a href="#">HARRIS DE LA PLUME DU PEVELE</a> 1992-03-26 (M) BEK4700 - bluebelton</p>	<p><a href="#">MARA</a> (F) 2863</p>
	<p><a href="#">NUBIRA</a> (F) BEK 034919</p>	<p><a href="#">NERA DEL SOLE</a> 1997-05-15 (F) LOI LO9834810 - bluebelton</p>	 <p><a href="#">ASPIS</a> 1990-03-05 (M) LOI ST416169 (CH GQ, Camp. Ripr., Ch. Ital. Lav.) - bluebelton</p>	<p><a href="#">HULULA DEL SOLE</a> 1993-03-25 (F) LOI ST479822 - bluebelton</p>
	<p><a href="#">BEBETO RAJKAL</a> (M) BEK 034942</p>	<p><a href="#">BIRBO DEGLI LUBERTI</a> 1990-11-20 (M) LOI ST433528 (CH IT T, CH INT) - liver</p>	<p><a href="#">BLANKA RAJKAL</a> (F) JR78822ES</p>	
		<p><a href="#">ZEFIR DEI LADERCHI</a> 1993-01-10 (M) LOI ST478984 - lemon</p>	<p><a href="#">PHRYNE</a> (F) JR 78165 ES</p>	

Eleveur : Rapakoulias Christos / Propriétaire : Georgakis Andreas (patsallos@yahoo.gr)  
Sang italien (estimation) : 80 %

## Taux de consanguinité (estimation) : 2 %

ASPIS (4 X 4) : 0.007812  
DUN DEL MESCHIO (7,7,7,7,8,8,8,8,8,8 X 7,7,8,8,8,8,8,8) : 0.004272  
DECOR LOT (6,7,7,7,8,8 X 6,6,7,8) : 0.003296  
RADENTIS GIAN (5,6 X 6) : 0.001038  
ROVAL MOZART (6 X 5) : 0.000977  
LEM DEL RESEGONE (7,7,8 X 7,7,8) : 0.000519  
NEDA DEL DIANELLA (6,6 X 6) : 0.000488  
ROVAL SLY (7 X 5) : 0.000488  
GAETANO DEL BINARIO (6 X 6) : 0.000488  
BOI (7 X 6) : 0.000244  
ORFEO DELLA TRAPPOLA (8 X 7,7,7) : 0.000122  
BERNA (7 X 7,7) : 0.000122  
ROVAL FLY (7 X 6,8) : 0.000061  
DAGA (8 X 8) : 0.000031  
MANOS DU PORT OCEAN (8 X 8) : 0.000031



Note : les données ne sont pas garanties. Elles ont été entrées par les membres sans garantie d'exactitude.