

HYSCHIA DE CORIAM dit DIVA

2008-08-29 (F) 1049372

Couleur : Noi.PBl.Env (bluebelton)

[fiche affixe](#)

Père
BOBET DI LORO PICENO
 2003-08-10 (M)
 LOI LO041853
 (Camp. Tr. (Ch GQ), Ch Ital. Lav., ChIT)
 - tricolore



RADENTIS NOMAR 1998-03-22 (M)
 LOI LO98133353 ((CHGQ CHITF /
 CHIT.B)) - liver



TRUEBA DI LORO PICENO
 1999-09-25 (F) LOI LO0049020 -
 BIANCO MASCHERA ASIMMETRICA
 SX E

RADENTIS SBRANCO 1991-07-01
 (M) LOI ST448908 (CH IB, Ch. Int. Lav.) -
 lemon



KELLI DELLA MARIKA 1995-08-06
 (F) LOI ST530204 (Ch. Ital. Lav.) -
 bluebelton



FRANCINI'S JEFF 1993-04-03 (M)
 LOI ST479317 (Ch. Ital. Lav., Ch. Int. Lav.,
 Camp. Ripr.) - bluebelton



DARA DI LORO PICENO 1991-02-18
 (F) LOI ST449335 - liver

RADENTIS BORG
 1987-04-30 (M) LOI
 ST350267 (Ch. Int.
 Lav., CH GQ, Ch. Ital.
 Lav., Camp. Ripr.) -

lemon

RADENTIS OLA 1984-09-30 (F) LOI
 ST298174 - lemon

RADENTIS BORG
 1987-04-30 (M) LOI
 ST350267 (Ch. Int.
 Lav., CH GQ, Ch. Ital.
 Lav., Camp. Ripr.) -

lemon

ZARA DELLA MARIKA 1993-06-10
 (F) LOI ST482071 - bluebelton






FRANCINI'S LUCA
 1989-07-08 (M) LOI
 ST404483 (Ch. Ital.
 Lav., CH GQ, Ch. Int.
 Lav., Camp. Ripr.) -

tricolore

FRANCINI'S SALLY 1986-01-19 (F)
 LOI ST325298 (Camp. Ripr.) - bluebelton

ROVAL FERRON 1989-12-15 (M) LOI
 ST408816 - bluebelton

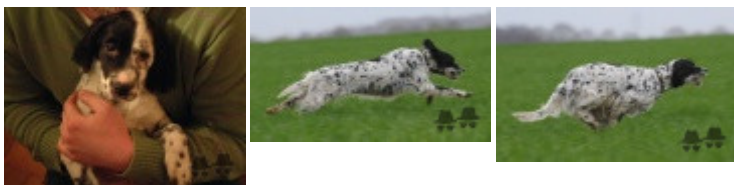
ZINGARA DI LORO PICENO
 1986-11-01 (F) LOI ST359012 -
 bluebelton

| | | | |
|--|--|--|---|
| <p>Mère BARACCA DE CORIAM (F) LOSH0915929 - bluebelton</p>  | <p>NERO 1997-03-29 (M) LOI LO9817889 (Ch T, Ch GQ) - bluebelton</p>  | <p>GUFO DI VAL DI CHIANA 1994-04-01 (M) LOI ST514177 (Ch GQ) - bluebelton</p>  | <p>NEGUS 1988-09-05 (M) LOI ST382982 (Camp. Tr. (Ch GQ), Camp. Int. Lav (Ch I T)) - bluebelton</p> |
| | <p>UTOPIE DE CORIAM 1996-10-24 (F) LOSH799805</p> | <p>KELLI 1992-06-18 (F) LOI ST466220 - bluebelton</p>  | <p>BRUNA 1985-01-01 (F) LOI ST299858 (Ch L Ch Int) - bluebelton</p> |
| | <p>NORD DI VAL DI CHIANA 1992-01-03 (M) LOI ST454469 (Ch IT, CH GQ) - tricolore</p>  | <p>NEGUS 1988-09-05 (M) LOI ST382982 (Camp. Tr. (Ch GQ), Camp. Int. Lav (Ch I T)) - bluebelton</p> | <p>HONDA DI VAL DI CHIANA 1989-10-01 (F) LOI ST406751 - lemon</p> |
| | <p>PERLA DE CORIAM (F) LOSH670174</p> | <p>ROVAL SLY 1987-04-22 (M) LOI ST351049 - bluebelton</p> | <p>JAGA DE LA GRANGE DU DIABLE (F) LOSH540488</p> |

Propriétaire : Jean Baptiste BRICE
Losh 1049372
Tatouage : BHWWNL
Sang italien (estimation) : 99 %
Estimation des points au pédigrée : 35

Taux de consanguinité (estimation) : 3.4 %

DECOR LOI (5,6,6,6,6,6,7,7 X 5,5,6) : 0.019531
DUN DEL MESCHIO (6,7,7,7,7,7,8,8,8,8,8,8 X 6,7,7,7,7,7,8,8) : 0.008453
LEM DEL RESEGONE (6,7,7,8 X 7,7,7,8,8) : 0.002197
SILA (6 X 5) : 0.000977
FRANCINI'S PEGGY (7,7,8 X 6) : 0.000610
MERA DELL'ORSONE (6 X 7,8,8) : 0.000488
CRISMANI DIK (7,8 X 8,8,8,8) : 0.000244
TRUEBA DELLA FAGIANA (8,8,8,8 X 8,8) : 0.000214
ARTU (8,8 X 7,8,8,8) : 0.000183
ARNO II DI VAL D'IDICE (7,8 X 8,8) : 0.000183
LINDO 3 DI CEREIA (8,8 X 7) : 0.000122
DERO DELLA NADIA (6 X 8) : 0.000122
MISS 3 DELLE VALLATE (7 X 8,8) : 0.000122
VIMON REVEL (8,8 X 8,8,8) : 0.000122
DICH DI VAL D'IDICE (8,8 X 8,8) : 0.000061
DAMA 1Z (8,8 X 8,8) : 0.000061
CORA DEL VOLO (8 X 8,8) : 0.000061
BOBET DI SAN FAUSTINO (8 X 8) : 0.000031
BRICK DEL ROVERE (8 X 8) : 0.000031



Note : les données ne sont pas garanties. Elles ont été entrées par les membres sans garantie d'exactitude.

