

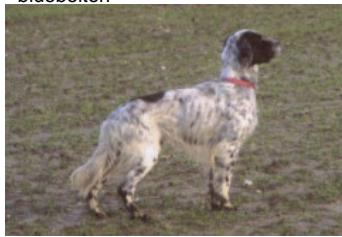
**FOSTER DU DUCHE DE PENTHIEVRE**








2010-08-22 (M) LOF 212228/37331

Couleur : Noï. PBl.Env.Mou. (bluebelton) / Titres : TAN  
[fiche affixe](#)

hosted by setter-anglais.fr

Père

**TIM DE ROCHE VILAINE**2002-02-06 (M)  
LOF 163324/27344  
(CH P, TR GQ)  
- bluebelton**IAGO DE LAURENCIA** 1993-05-17  
(M) LOF 118125/17541 (CH P, TR GQ) -  
tricolore**OLGA DE ROCHE VILAINE**  
1998-08-21 (F) LOF 144933/27873 -  
bluebelton**CASH DU VAL DU RUTH** 1987-07-01  
(M) LOF 91886/12608 (Ch P, QFS) -  
bluebelton**ERMINE DE LAURENCIA** 1989-01-19  
(F) LOF 97940/18154 (CHP CHITF) -  
tricolore**LADY DE ROCHE VILAINE**  
1995-03-01 (F) LOF 126197/22530 -  
lemon**SAP EUS  
ROUANEZ KOAD**  
1981-03-11 (M) LOF  
68395/7363 (CHQFS  
TR) - tricolore**ULINE DE LA VIGNE D'IVRAIE**  
1983-09-27 (F) LOF 77572/11267 -  
bluebelton**SACRE DU PETIT  
MONASTERE** 1981-09-20 (M)  
LOF 70438/8324 (Ch GQ, FTP,  
Trialer) - bluebelton**RUZ-DU DE GWENVA**  
1980-05-04 (F) LOF  
65246/08523 (TR, CH  
GT) - tricolore**BOI** 1984-02-20 (M)  
LOF 96481/12378  
(TR) - bluebelton**DEESSE DU VAL  
CLAIR** 1988-05-01 (F)  
LOF 95020/15653 (TR) -  
liver**COW BOY DES  
RIVES DE  
L'ESTRIGON**  
1987-05-30 (M)  
LOF 91056/12289  
(CHQC CH.T. CHP CHA TR) - lemon**CATHY DE ROCHE VILAINE**  
1987-06-01 (F) LOF 91609/15159 (TR)  
- lemon

<p>Mère  <u>UPETTE DE COET CANTEL</u>  2003-06-07 (F)  LOF 172730/32989  - bluebelton</p>	<p><u>FRANCINI'S RAS</u> 2001-05-31 (M) LOI  LO01186453 - bluebelton</p>	<p><u>FRANCINI'S SULTANO</u> 1992-01-02  (M) LOI ST455529 (Ch. Int. Lav.) -  tricolore</p> 	<p><u>FRANCINI'S DIEGO</u>  1985-07-01 (M) LOI  ST315265 (Ch. Int.  Lav.) - tricolore</p> 	
		<p><u>FRANCINI'S BIRBA</u> 1997-05-15 (F)  LOI LO9856854 - bluebelton</p>	<p><u>FRANCINI'S SAIL</u>  1985-08-13 (F) LOI  ST316342 (Ch. Int.  Lav., Ch. Ital. Lav.,  Camp. Ripr.) -  tricolore</p> 	<p><u>FRANCINI'S ROCKY</u>  1989-02-25  (M) LOI  ST409893 (Ch.  Int. Lav., Ch. Ital. Lav.) - bluebelton</p> 
	<p><u>RINA DE COET CANTEL</u> 2000-08-09  (F) LOF 156237/30964 - tricolore</p>	<p><u>ORAMBO DES BERGES DE LA  GÉLINE</u> 1998-04-25 (M) LOF  146498/23642 - bluebelton</p> 	<p><u>FRANCINI'S ALLEGRA</u> 1995-03-22  (F) LOI ST519115 - bluebelton</p>	<p><u>PINTO</u> 1992-04-30 (M) LOI  ST459498 (TR GQ) -  bluebelton</p> 
		<p><u>ORPHEE DE COET CANTEL</u>  1998-06-14 (F) LOF 144249/27363 -  tricolore</p>	<p><u>GUESTY DE LA MAZORRA</u>  1991-08-13 (F) LOF 117192/19292 (Tr  GQ) - bluebelton</p>	<p><u>I ROCKY  DES  BERGES  DE LA  GÉLINE</u>  1993-06-20 (M) LOF 120187/20274  (TR,CH GQ) - bluebelton</p> 
			<p><u>LOREN DE COET CANTEL</u>  1995-04-10 (F) LOF 127487/22876 -  tricolore</p>	

Propriétaire : M LOUIS GRALL  
Tatouage : 2GUG131  
Sang italien (estimation) : 65 %  
Estimation des points au pédigrée : 25



Note : les données ne sont pas garanties. Elles ont été entrées par les membres sans garantie d'exactitude.

