

SORGIÑARAN TXURI

2011-05-22 (F) LOE
Couleur : Blanco y negro (bluebelton)
[fiche affixe](#)



hosted by setter-anglais.fr

Père
BAT DE GAINKO
2006-04-13 (M)
LOF 185355/32571
- bluebelton

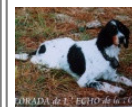
STEVE DU SALEYS 2001-09-09 (M)
LOF 162423 - tricolore



POULBOT DE CAZAQUS 1999-09-20
(M) LOF 151060/24266 (TR, CH A) -
tricolore



**IBOS DU VAL
BARREAU**
1993-08-20 (M) LOF
120246/17836 (TR,
CH A) - tricolore



**LORADA DE L'ECHO
DE LA FORET**
1995-05-14 (F) LOF
127517/22592 (TR, CH
A, CH P) - tricolore



**IAGO DE
LAURENCIA**
1993-05-17 (M) LOF
118125/17541 (CH P,
TR GQ) - tricolore



GRACKEL 1991-05-01 (F)
LOF 109008/18375 (TR, CH
P, CH T) - tricolore

PRALINE DE L'ECHO DE LANVAUX
1999-07-25 (F) LOF 150953/28846 -
tricolore

LICQ DES SEPT PROVINCES
1995-01-16 (M) LOF 126466/20379
(TR, CH P) - tricolore



ED 1989-08-06 (M) LOF
101468/14543 (TR) - lemon

HERA DES SEPT PROVINCES
1992-07-12 (F) LOF 115841/21160 -
bluebelton

RIKA 2000-06-23 (F) LOF
154579/34262 - Noi Mar Fau PBI Env









**LEDA DE L'OREE DU BOIS
BECASSES** 1995-09-01 (F) LOF
129921/25609 (CH A, TR) - lemon



**HERM DE
L'OREE DU
BOIS
BECASSES**
1992-06-12

(M) LOF 114818/17865 (CH T, CH GQ) -
lemon

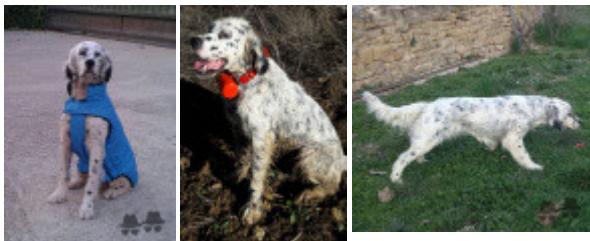
**ELSA DE L'OREE DU BOIS
BECASSES** 1989-03-15 (F) LOF
99462/16329 (TR) - tricolore

<p>Mère <u>WANDA DE BAYARA</u> (F) LOE 1447948</p>	<p><u>RADENTIS D'ESPANA</u> 1995-05-22 (M) LOE 990823 (Ch IT B, Ch GQ) - lemon</p> 	<p><u>RADENTIS SBRANCO</u> 1991-07-01 (M) LOI ST448908 (CH IB, Ch. Int. Lav.) - lemon</p> 	<p><u>RADENTIS BORG</u> 1987-04-30 (M) LOI ST350267 (Ch. Int. Lav., CH GQ, Ch. Ital. Lav., Camp. Ripr.) - lemon</p> 	
	<p><u>PAMPA DE BAYARA</u> (M) LOE 1050564</p>	<p><u>RADENTIS ALA</u> 1994-03-15 (F) LOI ST496649 (Ch T) - lemon</p>	<p><u>RADENTIS OLA</u> 1984-09-30 (F) LOI ST298174 - lemon</p>	<p><u>RADENTIS BORG</u> 1987-04-30 (M) LOI ST350267 (Ch. Int. Lav., CH GQ, Ch. Ital. Lav., Camp. Ripr.) - lemon</p> 
	<p><u>SARA</u> (F) LOE 0477023</p>	<p><u>FLORIMOND DE RACK LAND</u> 1990-12-12 (M) LOF 107557/17873 (Ch P) - bluebelton</p> 	<p><u>ALMER</u> 1984-04-03 (M) LOF 81739/9431 (CHQFS CHQFC CHCPC TR) - bluebelton</p> 	<p><u>VENISE</u> 1984-06-03 (F) LOF 80487/11527 (Ch CPS FGT, Trialer) - bluebelton</p> 
				<p><u>D'XAMPA DES SEPT PROVINCES</u> 1988-02-15 (M) LOF 94374/14394 (TR, CH P, CH A) - bluebelton</p> 
			<p><u>NERI</u> (F) LOE 0326193</p>	

Sang italien (estimation) : 61 %
Estimation des points au pédigrée : 18

Taux de consanguinité (estimation) : 1.7 %

ALMER (5,6,6 X 4) : 0.007812
BOI (5,6 X 5) : 0.002930
DECOR LOT (6 X 6,6,6,6,7,8,8,8) : 0.002563
RUMBA DES TOUYAS BLANCS (6 X 5) : 0.000977
NANI (6 X 5) : 0.000977
LEM DEL RESEGONE (7,7,8,8,8 X 6,7) : 0.000610
DUN DEL MESCHIO (8,8 X 7,7,7,8,8,8,8) : 0.000427
MANOS DU PORT OCEAN (7 X 6) : 0.000244
BAIRO (8 X 6,6) : 0.000244
MANON DES TOUYAS BLANCS (7,8 X 6) : 0.000122
JAKIN DE LUZEAN (8 X 6) : 0.000122
PINO DI CEREIA (8 X 7,7) : 0.000122
CRISMANI OLAF (8 X 7,8,8,8) : 0.000092
UN DES BRESSANS (8,8 X 7) : 0.000061
ARNO II DI VAL D'IDICE (8 X 8,8) : 0.000061
CORMOR PENELOPE (8 X 8) : 0.000031
QUELAS (8 X 8) : 0.000031



Note : les données ne sont pas garanties. Elles ont été entrées par les membres sans garantie d'exactitude.

