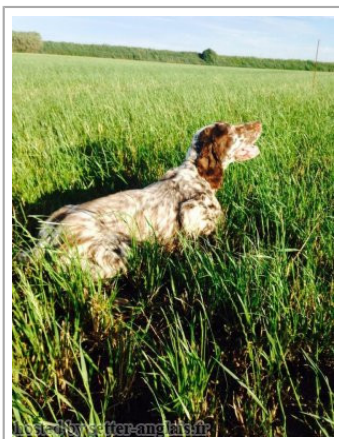
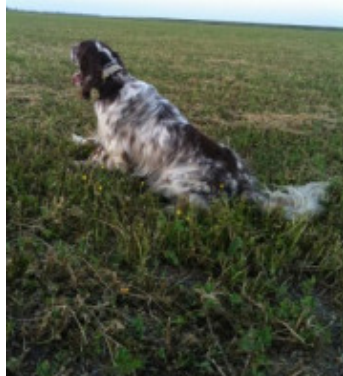


**DIVA**

2013-08-21 (F) LOI LO13105553  
Couleur : BLANCO E HIGADO (liver)



Père  
**GERICO**  
(M)  
LOI 09145549  
(CH. IT GQ)  
- liver



**BIG JIM** 2000-12-01 (M) LOI  
LO0188207 (CH GQ, Ch. Int. Lav., Camp.  
Ripr., Ch. Ital. Lav.) - liver



**RAISSA** 2000-05-08 (F) LOI  
LO0118620 (Camp. Ripr.) - BIANCO  
ARANCOI



**LERRY** 1997-02-14 (M) LOI  
ST555862 (Ch GQ, Ch IT) - bluebelton



**RADENTIS TANGA** 1998-09-15 (F)  
LOI LO9958147 - lemon



**RADENTIS SBRANCO** 1991-07-01  
(M) LOI ST448908 (CH IB, Ch. Int. Lav.) -  
lemon



**FAUNA** 1996-08-10 (F) LOI ST551359  
- lemon



**ARNO** 1988-04-17  
(M) LOI ST374735  
(Ch. Int. Lav., Camp.  
Ripr., Ch. Ital. Lav.) -  
lemon



**PICENUM UNGA**  
1990-10-02 (F) LOI  
ST430406 (CH GQ) -  
liver



**RADENTIS  
SBRANCO**  
1991-07-01 (M) LOI  
ST448908 (CH IB, Ch.  
Int. Lav.) - lemon

**BESSY** 1995-02-10 (F) LOI ST515746  
- lemon



**RADENTIS BORG**  
1987-04-30 (M) LOI  
ST350267 (Ch. Int.  
Lav., CH GQ, Ch. Ital.  
Lav., Camp. Ripr.) -

lemon







**RADENTIS OLA** 1984-09-30 (F) LOI  
ST298174 - lemon



**ARNO** 1988-04-17  
(M) LOI ST374735  
(Ch. Int. Lav., Camp.  
Ripr., Ch. Ital. Lav.) -  
lemon



**INDIRA** 1990-06-01  
(F) LOI ST423625 (Ch  
IT) - lemon

|   |  |  |   |
|---|--|--|---|
| <p>Mère<br/><b>BELLA</b><br/>2007-09-26 (F)<br/>LOI LO0896165<br/>- bluebelton</p>  | <p><b>KAPO'</b> 2003-11-10 (M) LOI<br/>LO0439835 (Ch IT GQ) - bluebelton</p>  | <p><b>NERO</b> 1997-03-29 (M) LOI<br/>LO9817889 (Ch T, Ch GQ) - bluebelton</p>  | <p><b>GUFO DI VAL DI CHIANA</b><br/>1994-04-01 (M) LOI<br/>ST514177 (Ch GQ) -<br/>bluebelton</p>   |
|   | <p><b>FIONA</b> 2002-08-05 (F) LOI<br/>LO02149719 - bluebelton</p>   | <p><b>KYBA</b> 1998-01-01 (F) LOI<br/>LO98118951 - lemon</p>   | <p><b>VANGOGH DELL'AD MONTES</b><br/>1992-07-30 (M) LOI ST463291 (Camp.<br/>Ripr.) - bluebelton</p>   |
|   |  | <p><b>FISCO</b> 1997-07-14 (M) LOI<br/>LO9828213 - bluebelton</p>  | <p><b>FRANCINI'S LUCA</b><br/>1989-07-08 (M) LOI<br/>ST404483 (Ch. Ital.<br/>Lav., CH GQ, Ch. Int.<br/>Lav., Camp. Ripr.) -<br/>tricolore</p>  |
|   |  | <p><b>SOFIA</b> 1998-06-08 (F) LOI LO993335<br/>- bluebelton</p>   | <p><b>GIANA</b> 1987-09-15 (F) LOI ST359451<br/>- lemon</p>   |
|   |  |  | <p><b>ARNO</b> 1988-04-17<br/>(M) LOI ST374735<br/>(Ch. Int. Lav., Camp.<br/>Ripr., Ch. Ital. Lav.) -<br/>lemon</p>                            |
|   |  |  | <p><b>BRUNA</b> 1994-01-08 (F) LOI<br/>ST493276 - bluebelton</p>  |

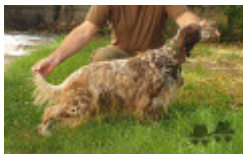
Eleveur : ALESSI LUCIANO / Propriétaire : RONCHI VALERIO

Puce : 380260000662292

Estimation des points au pédigrée : 35

## Taux de consanguinité (estimation) : 4.4 %

**ARNO** (4,4,5 X 4) : 0.019531  
**DECOR LOI** (6,6,6,6,7,7,7,7 X 6,6,6,7) : 0.009277  
**RADENTIS GIAN** (5,5,6 X 5,6) : 0.007782  
**DUN DEL MESCHIO** (7,7,7,8,8,8,8,8,8,8,8 X 6,7,7,8,8,8,8,8) : 0.005615  
**OLAF DEL TRE PONTI** (6 X 6) : 0.000488  
**LEM DEL RESEGONE** (8 X 6,7,7,8,8,8,8) : 0.000397  
**HALOA DELLA VECCHIA IRLANDA** (6,6,7,7 X 6) : 0.000244  
**ORFEO DELLA TRAPPOLA** (7 X 7) : 0.000122  
**ARTU** (8 X 8,8,8,8) : 0.000092  
**DICH DI VAL DIDICE** (8 X 8) : 0.000031  
**FRANCINI'S LINDA** (8 X 8) : 0.000031  
**LINDO 3 DI CEREJA** (8 X 8) : 0.000031  
**TRUEBA DELLA FAGIANA** (8 X 8) : 0.000031



Note : les données ne sont pas garanties. Elles ont été entrées par les membres sans garantie d'exactitude.

