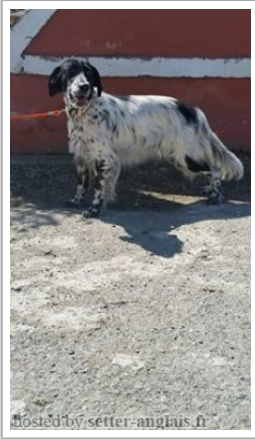


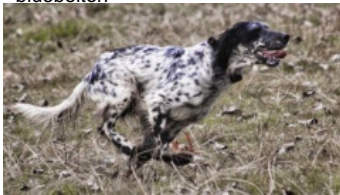
TRABZON FOX

2016-04-20 (M)
Couleur : Siyah-Beyaz Pafal?
[fiche affixe](#)



hosted by setter-anglais.fr

Père
[GISTREDO MAIKEL dit DIDO](#)
2012-12-21 (M)
LOE 2110281
- bluebelton



[RADENTIS COBRA](#) 2000-06-30 (M)
LOI LO0128791 (Camp. Tr. (Ch GQ)) -
lemon



[GISTREDO FUSCA](#) 2007-06-30 (F)
LOE 1732330 - liver



[LERRY](#) 1997-02-14 (M) LOI
ST555862 (Ch GQ, Ch IT) - bluebelton



[RADENTIS BELLA](#) 1997-01-13 (F)
LOI ST559827 (IT Ch GQ) - lemon



[GIBELTARIK BORIS](#) 2000-12-14 (M)
GKC02014 (Ch T GQ) - liver



[SARA DE URTXUBIGANE dit INDIA](#)
2005-03-01 (F) LOE 1519311 (P.A.N.) -
liver



[ARNO](#) 1988-04-17
(M) LOI ST374735
(Ch. Int. Lav., Camp.
Ripr., Ch. Ital. Lav.) -
lemon



[PICENUM UNGA](#)
1990-10-02 (F) LOI
ST430406 (CH GQ) -
liver



[RADENTIS
SBRANCO](#)
1991-07-01 (M) LOI
ST448908 (CH IB, Ch.
Int. Lav.) - lemon

[ODE DEL SOLE](#) 1993-09-10 (F) LOI
ST490145 - liver



[DODGE DEL
TIRSO](#) 1998-02-14
(M) LOI LO9942918
(Ch IT IT-T, CHIB,
Camp. Tr. (Ch GQ)) -
bluebelton










[RADENTIS ERICA](#)
1995-05-25 (F) LOI
ST531494 ((CH(I)B)) -
lemon



[RADENTIS CLIO](#)
2003-05-20 (M) LOE
1454658 (Tr.GB(E.06)) -
liver

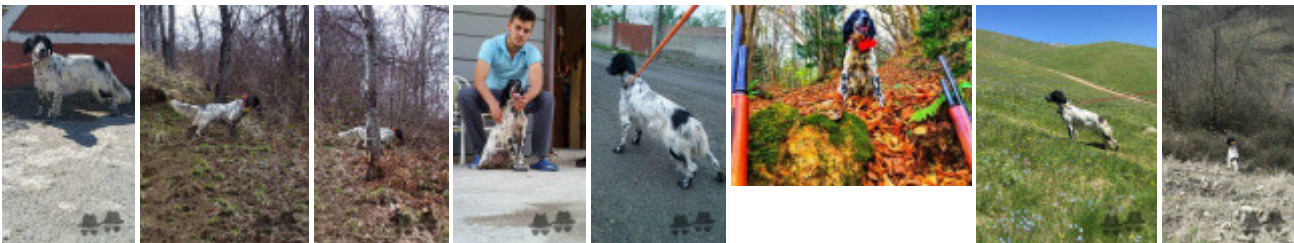
[LUSI DE URTXUBIGANE](#) (F) LOE
1188659

<p>Mère</p> <p><u>BONITA</u> 2012-07-29 (F) FUSARIS02</p>	<p><u>KAPO'</u> 2003-11-10 (M) LOI LO0439835 (Ch IT GQ) - bluebelton</p> 	<p><u>NERO</u> 1997-03-29 (M) LOI LO9817889 (Ch T, Ch GQ) - bluebelton</p> 	<p><u>GUFO DI VAL DI CHIANA</u> 1994-04-01 (M) LOI ST514177 (Ch GQ) - bluebelton</p> 	
		<p><u>KYBA</u> 1998-01-01 (F) LOI LO98118951 - lemon</p>	<p><u>VANGOGH DELL'AD MONTES</u> 1992-07-30 (M) LOI ST463291 (Camp. Ripr.) - bluebelton</p>	<p><u>KELLI</u> 1992-06-18 (F) LOI ST466220 - bluebelton</p> 
	<p><u>DIJANA</u> 2009-10-10 (F) JR703264ES - bluebelton</p>	<p><u>EUTRE DC</u> 2002-07-13 (M) LOI LO02140178 - tricolore</p> 	<p><u>TARO DEI FELINI</u> 1994-05-26 (M) LOI ST506181 (Ch Italie T, Ch IT T, Camp. Tr. (Ch GQ)) - tricolore</p> 	<p><u>SARA</u> 1989-04-30 (F) LOI ST395811 - bluebelton</p>
		<p><u>DZADA</u> (F) JR03260 - bluebelton</p>	<p><u>ESTER DEL DIANELLA</u> 1997-07-29 (F) LOI LO9886170 - lemon</p>	<p><u>ROONEY DEL SARGIADAE</u> 2004-06-11 (M) LOI LO04120540 (Ch GQ, Camp. Ital. Assol., Camp. Ital. Lav., Camp. Int. Lav.) - bluebelton</p> 
			<p><u>KONY SA BEDEMA</u> (F) 78805</p>	

Taille : 60 cm
Puce : 990000000354384
Sang italien (estimation) : 98 %
Estimation des points au pédigrée : 24

Taux de consanguinité (estimation) : 1.6 %

LERRY (3 X 6) : 0.003975
DECOR LOT (7,7,7,7,7,7,7,8,8,8,8,8 X 6,7) : 0.003357
RADENTIS SBRANCO (4,5,6,6 X 7) : 0.002075
ARNO (4 X 7,7,8) : 0.001465
RADENTIS GIAN (6,6,7,7,7,8,8,8,8 X 8,8) : 0.001099
DUN DEL MESCHIO (7,8,8,8,8,8,8 X 8,8,8,8) : 0.000977
ROVAL VIENNA (6,7,7,8 X 8,8) : 0.000549
OLAF DEL TRE PONTI (7,8,8 X 6) : 0.000488
ROVAL MOZART (6 X 6) : 0.000488
LEM DEL RESEGONE (8 X 6,7,8,8,8,8,8,8,8) : 0.000427
RALF DEL DIANELLA (8 X 5,7,7) : 0.000366
FURIA (7,8 X 7) : 0.000183
ORFEO DELLA TRAPPOLA (7 X 7) : 0.000122
TANGA (7,8 X 8) : 0.000092
MORGAN (7,8 X 8) : 0.000092
MUR (8,8 X 8,8) : 0.000061
FRANCINI'S LINDA (8 X 8,8) : 0.000061
DEM (8 X 8) : 0.000031



Note : les données ne sont pas garanties. Elles ont été entrées par les membres sans garantie d'exactitude.