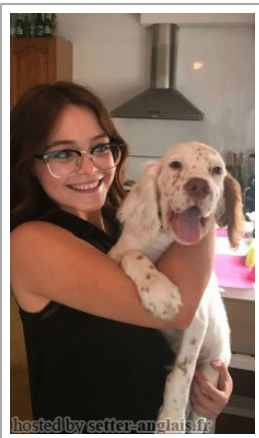


**GISTREDO DANTE**

2017-06-01 (M) LOE 2383766  
Couleur : Blanco y naranja (lemon)  
[fiche affixe](#)



hosted by setter-anglais.fr

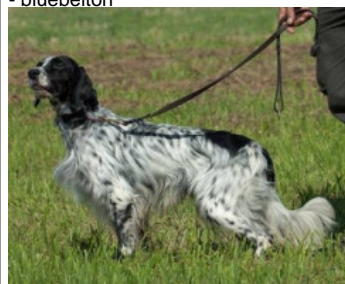
**GIAR D'ALERIA** 2008-11-15 (M) LOI  
LO09120198 (Camp. Soc., Ch. Ita. Lav.) -  
lemon



Père

**NOLO DEL ZAGNIS**

2012-07-05 (M)  
LOI LO12129055  
(CH GQ, CH IT, Camp. Ital. Lav. (CH T), Camp.  
Ripr.)  
- bluebelton



**ALCE DEL ZAGNIS** 2009-10-27 (F)  
LOI LO1054031 - lemon

**LORD DEL ZAGNIS** 2002-09-30 (M)  
LOI LO02167262 (Ch. Ital. Lav., CH GQ,  
Ch. Int. Lav.) - lemon



**FATA DI BOSCOBANCO** 2005-08-04  
(F) LOI LO0628070 (Ch. Ital. Lav.) -  
bluebelton

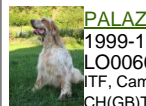
**ZAC DEL ZAGNIS** 2004-02-08 (M)  
LOI LO04103934 - bluebelton

**MIMI' DEL ZAGNIS** 2004-02-08 (F)  
LOI LO04103900 - tricolore



**RAMBO DEL  
ZAGNIS** 1994-12-29  
(M) LOI ST514955  
(Ch. Ital. Lav.) - tricolore

**LILLA DEL ZAGNIS** 1993-11-18 (F)  
LOI ST492677 - tricolore



**PALAZIENSIS RAMBO**  
1999-11-01 (M) LOI  
LO0060896 (Ch W0F/CH, IT T,  
ITF, Camp. Tr. (Ch GQ), CH(ES)T,  
CH(GB)T) - lemon

**MALYA DI SOVIGLIANA** 2000-01-05  
(F) LOI LO0099099 - tricolore

















**BUL DEL ZAGNIS** 1994-07-21  
(M) LOI ST531735 (Ch. Ital. Lav.) -  
liver

**CORNOVAGLIA DEL ZAGNIS**  
1999-10-10 (F) LOI LO00114104 -  
lemon

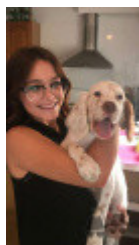


**ALVIS OLIVER**  
1998-01-10 (M) LOI  
LO98116933 (Ch. Ital.  
Lav., Ch. Int. Lav.) -  
tricolore

**CARMINA DEL ZAGNIS** 1999-10-10  
(F) LOI LO00114099 - lemon

<p>Mère <b>GISTREDO JOMA</b> 2015-08-26 (F) LOE 2281224 - bluebelton</p> 	<p><b>GISTREDO YACK</b> 2010-03-15 (M) LOE 1981680 - tricolore</p> 	<p><b>RADENTIS NOMAR</b> 1998-03-22 (M) LOI LO98133353 ((CHGQ CHITF / CHIT.B)) - liver</p> 	<p><b>RADENTIS SBRANCO</b> 1991-07-01 (M) LOI ST448908 (CH IB, Ch. Ital. Lav.) - lemon</p> 
<p><b>TIZA</b> 2008-09-27 (F) LOE 1854001 - lemon</p> 	<p><b>GISTREDO FURIA</b> 2007-06-30 (F) LOE 1732329 - liver</p> 	<p><b>KELLI DELLA MARIKA</b> 1995-08-06 (F) LOI ST530204 (Ch. Ital. Lav.) - bluebelton</p> 	<p><b>GIBELTARIK BORIS</b> 2000-12-14 (M) GKC02014 (Ch T GQ) - liver</p> 
<p><b>GISTREDO FUEGO</b> 2007-06-30 (M) LOE 1732328 - liver</p> 	<p><b>SARA DE URTXUBIGANE dit INDIA</b> 2005-03-01 (F) LOE 1519311 (P.A.N.) - liver</p> 	<p><b>GIBELTARIK BORIS</b> 2000-12-14 (M) GKC02014 (Ch T GQ) - liver</p> 	<p><b>SARA DE URTXUBIGANE dit INDIA</b> 2005-03-01 (F) LOE 1519311 (P.A.N.) - liver</p> 
<p><b>BERATI DE BAYARA</b> 2006-10-23 (F) LOE 1631142 - lemon</p> 	<p><b>NASH DU POULIT SAN DANIS</b> 1997-01-01 (M) LOF 136341/25088 (TR CHP CH.T. CHITF CHP CHT. CHIT. CH.T. CHITF / CHBE.B CHES.B) - bluebelton</p> 	<p><b>URRATS DE BAYARA</b> (F) LOE 1381121</p>	

Eleveur : GISTREDO / Propriétaire : Pedro Javier Caballero  
Puce : 981098106538390  
Sang italien (estimation) : 93 %  
Estimation des points au pédigrée : 23



Note : les données ne sont pas garanties. Elles ont été entrées par les membres sans garantie d'exactitude.

