








HASS DE LOS VITORONES

(M) LOE 86573637
Couleur : blanco-negro (bluebelton)
[fiche affixe](#)



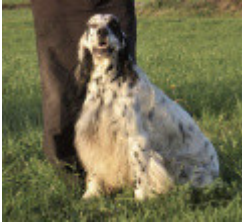
hosted by setter-anglais.fr

<p>Père</p> <p>LUX OD BENCICA (M) LOE 1051482 (F.T.Ch.) - bluebelton</p> 	<p>BECKER OD BENCICA 1997-04-03 (M) HR11621 (Ch) - tricolore</p> 	<p>DEN OD BENCICA (M) HR10244 (Ch HR)</p>	 <p>KIP OD BENCICA (M) JR42324 (Ch IB Ch IT) - bluebelton</p>	
	<p>LUNA OD BENCICA (F) HR12060</p>	<p>IRA DEI LADERCHI 1990-01-10 (F) LOI ST411385 (CAC) - tricolore</p> 	<p>MARK DELLA BASSANA 1985-05-20 (M) LOI ST317648 (Camp. Assoluto, Ch. Ital. Lav., Camp. Ripr.) - tricolore</p>	<p>SIMBA OD BENCICA (F) JR43345 - Bencic Vesna</p>
<p>Mère</p> <p>IVANA OD BENCICA (F) LOE 1698047</p>	<p>AXEL OD BENCICA (M) HR12356ES</p>	<p>BILL 1994-07-25 (M) LOI ST519654 - lemon</p>	 <p>KIP OD BENCICA (M) JR42324 (Ch IB Ch IT) - bluebelton</p>	
	<p>TINA OD BENCICA (F) LOE 0494382</p>	<p>MIA OD BENCICA (F) HR11258</p>	<p>ZENA OD BENCICA 1992-04-17 (F) LOI ST483258 - lemon</p>	<p>BEL OD BENCICA (M) JR43235</p>
	<p>AIM OD BENCICA (M) JR42434 (Ch IT)</p>	<p>BINA OD BENCICA (F) LOE</p>	<p>GOGA OD PASTORCICA (F) HR44409</p>	<p>inconnu</p>
	<p>DINA OD BENCICA (F) JR43492 (CH Tr)</p>	<p>LOPEZ OD BENCICA (M) JR41673 (Ch Int)</p> 	<p>ZENA OD BENCICA 1992-04-17 (F) LOI ST483258 - lemon</p>	<p>inconnu</p>
			<p>DAMA OD BENCICA (F) JR.41685 (Ch IB)</p>	
			<p>RADENTIS GIAN 1983-01-02 (M) LOI ST258470 (Ch. Ital. Lav., Ch. Int. Lav., Camp. Ripr.) - lemon</p> 	
			<p>DAMA OD BENCICA (F) JR.41685 (Ch IB)</p>	

Sang italien (estimation) : 84 %
Estimation des points au pédigrée : 18

Taux de consanguinité (estimation) : 9.7 %

BILL (3 X 3) : 0.033569
LOPEZ DELLA BASSANA (6,6,6,6,6,6,7,7,7,7,7,7,7,7,7,7 X 5,6,7,7,7,7) : 0.019653
DAMA OD BENCICA (5,5,6 X 4,4,5) : 0.019531
KIP OD BENCICA (4,4,5 X 4) : 0.011902
UP DI CEREIA (7,7,7,7,7,8,8,8,8,8,8,8,8,8,8,8 X 6,7,7,7,8,8,8,8,8) : 0.003448
ITRI DELLA BASSANA (5,6,6,6 X 6,6) : 0.002930
GIP DELLA BASSANA (5,5,5,6 X 5) : 0.001953
LOPEZ OD BENCICA (6 X 4) : 0.001953
CIBA DELLA BASSANA (5,6 X 6) : 0.000977
STELLA DELLA BASSANA (6,6 X 6) : 0.000488
CRISMANI DUMBO (7,7,7,7,8,8 X 7,8) : 0.000458
LAICA DI POMPIANO (6,7,7,7,7 X 7,7) : 0.000244
GAIA DELLE MORENE (8,8,8,8 X 8) : 0.000031
SAULO DI CEREIA (8,8,8,8 X 8) : 0.000031



Note : les données ne sont pas garanties. Elles ont été entrées par les membres sans garantie d'exactitude.

