

DINO VOM BELMEKEN

(M) PK29450/15
Couleur : Lemon
[fiche affixe](#)



hosted by setter-anglais.fr

Père
BAMBI OD HRISTICA
(M)
JR704000
- lemon



BOBET DI LORO PICENO
2003-08-10 (M) LOI LO041853 (Camp.
Tr. (Ch GQ), Ch Ital. Lav., ChIT) - tricolore



DORIS OD HRISTICA (F) JR79932 -
tricolore



RADENTIS NOMAR 1998-03-22 (M)
LOI LO98133353 ((CHGQ CHITF /
CHIT.B)) - liver



TRUEBA DI LORO PICENO
1999-09-25 (F) LOI LO0049020 -
BIANCO MASCHERA ASIMMETRICA
SX E



**RADENTIS
SBRANCO**
1991-07-01 (M) LOI
ST448908 (CH IB, Ch.
Int. Lav.) - lemon



**KELLI DELLA
MARIKA** 1995-08-06
(F) LOI ST530204 (Ch.
Ital. Lav.) - bluebelton



FRANCINI'S JEFF
1993-04-03 (M) LOI
ST479317 (Ch. Ital. Lav.,
Ch. Int. Lav., Camp. Ripr.) -
bluebelton

DARA DI LORO PICENO 1991-02-18
(F) LOI ST449335 - liver

FULL 2000-10-15 (M) LOI LO0166066
- bluebelton

HAROF DEL DIANELLA 1990-08-11
(M) LOI ST423768 (Ch. Ital. Lav.) -
bluebelton

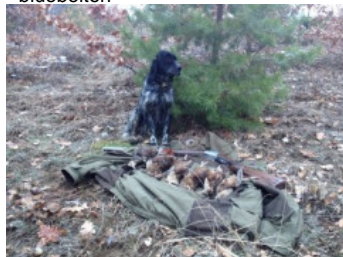
LEA 1994-02-02 (F) LOI ST501635 -
tricolore

TARA (F) JR78575 - tricolore

HEFES OD HRISTICA (M) JR76937 -
bluebelton

TEA 2001-01-21 (F) LOI LO0195742 -
lemon

Mère
MARTA DEL DUDA
(F)
PK25038/14
- bluebelton



ROONEY DEL SARGIADAE
2004-06-11 (M) LOI LO04120540 (Ch
GQ, Camp. Ital. Assol., Camp. Ital. Lav., Camp.
Int. Lav.) - bluebelton



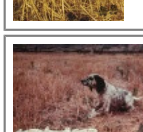
BIG JIM 2000-12-01 (M) LOI
LO0188207 (CH GQ, Ch. Int. Lav., Camp.
Ripr., Ch. Ital. Lav.) - liver



CASSIA 2002-03-19 (F) LOI
LO02125347 - lemon



LERRY 1997-02-14 (M)
LOI ST555862 (Ch GQ, Ch
IT) - bluebelton



RADENTIS TANGA
1998-09-15 (F) LOI
LO9958147 - lemon

FIERO 1996-08-10
(M) LOI ST551356
(CHGQ, Ch ITF, Ch IB, Ch
ITT) - lemon

CASSIA 1994-06-19 (F) LOI
ST507935 - lemon

BETA (F) JR703070

BECKHAM 2002-06-16 (M) LOI
LO02143991 (Camp. Tr. (Ch GQ) Camp.
Ital. Lav. Camp. Int. Lav.) - tricolore



**ASTON DEL
ZAGNIS** 1998-05-10
(M) LOI LO9938501 -
bluebelton

ISABELLA 1998-02-08 (F) LOI
LO98121266 - tricolore

ABA (F) JR700702

TICINO DEL BINARIO 1999-06-10
(M) LOI LO99196494 - liver

ALA 2000-11-16 (F) LOI LO0194738 -
liver

Sang italien (estimation) : 100 %
Estimation des points au pédigrée : 21

Taux de consanguinité (estimation) : 2.3 %

DECOR LOT (6,6,7,7,7,7,7,8,8,8,8 X 7,7,7,7,8,8,8,8,8,8) : 0.008881

RADENTIS SBRANCO (4 X 5,6) : 0.006226

RADENTIS GIAN (6,6 X 6,6,7,8,8) : 0.002197

RADENTIS BORG (5,5 X 6,7) : 0.001465

DUN DEL MESHIO (7,8,8,8,8,8,8,8 X 8,8,8,8,8,8) : 0.001343

DEM (6,7 X 7,7) : 0.000732

NEGUS (5,6 X 7) : 0.000732

MARK DELLA BASSANA (7,7 X 6) : 0.000488

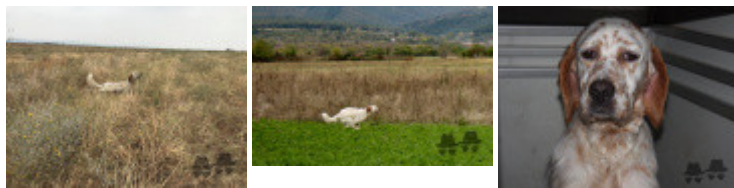
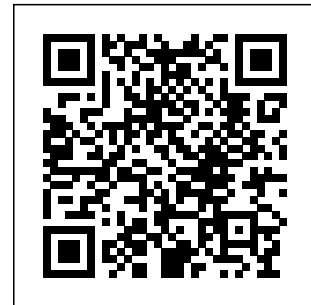
LEM DEL RESEGONE (7,7,8,8,8 X 7) : 0.000427

ROVAL MOZART (6,7 X 7) : 0.000366

LEM DEL DIANELLA (6,7,7 X 8) : 0.000061

ROVAL FLY (7,8,8 X 8) : 0.000031

ROCK DEL DIANELLA (8 X 8) : 0.000031



Note : les données ne sont pas garanties. Elles ont été entrées par les membres sans garantie d'exactitude.