

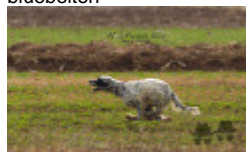
MANGO DE LA PLUME DU PÉVÈLE

2016-06-20 (M) LOF 247524
 Color: Noi.PBl.Env (bluebelton)
 Kennel

CYCLONE DU BARALAN 2007-08-03
 (M) LOF 196686/032337 (TR, CH P, CH IT)
 - bluebelton



Father
H DE FEUNTEUN BLEIS 2012-08-09
 (M) LOF 224372/039370 (CH GQ, CH IT) -
 bluebelton



**BOHEME DE L'OREE DU BOIS
 BECASSES** 2006-06-28 (F) LOF
 188159/36230 (TR, CH P, CH T) -
 bluebelton



BIG JIM 2000-12-01 (M) LOI
 LO0188207 (CH GQ, Ch. Int. Lav., Camp.
 Ripr., Ch. Ital. Lav.) - liver



LERRY 1997-02-14 (M) LOI ST555862
 (Ch GQ, Ch IT) - bluebelton



RADENTIS TANGA 1998-09-15 (F) LOI
 LO9958147 - lemon



SORIA DE HAIR 2001-06-05 (F) LOF
 160910/029880 (TR) - tricolore



ATOS 1996-09-01 (M) LOF
 141554/21331 (CH P, CH A, CH T) -
 bluebelton



LINA DE HAIR 1995-06-20 (F) LOF
 129091/27117 - tricolore

TIM DE ROCHE VILAINE 2002-01-02
 (M) LOF 163324/27344 (CH P, TR GQ) -
 bluebelton



IAGO DE LAURENCIA 1993-05-17 (M)
 LOF 118125/17541 (CH P, TR GQ) -
 tricolore



OLGA DE ROCHE VILAINE
 1998-08-21 (F) LOF 144933/27873 -
 bluebelton

**UNE BELLE DE L'OREE DU BOIS
 BECASSES** 2003-07-01 (F) LOF
 171912/33599 (TR, CH P, CH T) -
 bluebelton



RAMSES II DE LA TOUR MADELOC
 2000-04-10 (M) LOF 154001/24777 (TR)
 - tricolore

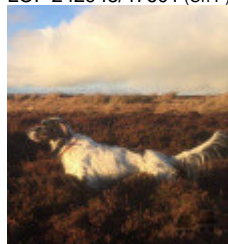


**LINDA DE L'OREE DU BOIS
 BECASSES** 1995-09-01 (F) LOF
 129924/25631 (TR, CH T) - bluebelton

NATAN 2012-10-03 (M) LOI
LO12157969 (CH IT GQ, Camp. Tr. (CH GQ))
- bluebelton



Mother
NIKITA DE CORIAM 2014-07-12 (F)
LOF 242948/47601 (Ch P) - tricolore



HOT LOVE DE CORIAM 2008-08-29
(F) LOSH1049371 - bluebelton



KAPO 2003-11-10 (M) LOI LO0439835
(Ch IT GQ) - bluebelton



NERO 1997-03-29 (M) LOI LO9817889
(Ch T, Ch GQ) - bluebelton



KYBA 1998-01-01 (F) LOI LO98118951
- lemon

QUATTA 2009-06-11 (F) LOI
LO1085288 - tricolore



ARTU DI ALDO DA SARNO
2006-01-02 (M) LOI LO0666968 (Ch GQ)
- tricolore



AMY 2002-08-10 (F) LOI LO02143515 -
tricolore

BOBET DI LORO PICENO 2003-08-10
(M) LOI LO041853 (Camp. Tr. (Ch GQ), Ch
Ital. Lav., ChIT) - tricolore



RADENTIS NOMAR 1998-03-22 (M)
LOI LO98133353 ((CHGQ CHITF / CHIT.B))
- liver



TRUEBA DI LORO PICENO
1999-09-25 (F) LOI LO0049020 -
BIANCO MASCHERA ASIMMETRICA
SX E

BARACCA DE CORIAM (F)
LOSH0915929 - bluebelton



NERO 1997-03-29 (M) LOI LO9817889
(Ch T, Ch GQ) - bluebelton



UTOPIE DE CORIAM (F) LOSH799805

Breeder: ELEVAGE DE LA PLUME DU PEVELE
Chip : 250268712481184
Italian breeding (estimated): 77%
Points in pedigree: 48

Note: data are entered by members. There is no guarantee about accuracy of data.