

LAOUEN AR LABOUSER

2015-09-25 (F) LOF 242090/49759
Couleur : Noï. PBl.Env.Mou. (bluebelton)
[fiche affixe](#)



Père
GREKO DU SENTIER DES LUTINS
2011-06-01 (M)
LOF 216125/36545
(TRGQ CHGQ)
- bluebelton



VERDI DE LA PASSEE DE L'EPERON 2004-03-05 (M) LOF 174987/28537 (TRGQ TR) - lemon



AKXEL DU SENTIER DES LUTINS 2005-06-01 (F) LOF 181158/34973 (CHP -TRGQ -TR) - bluebelton



FIERO 1996-08-10 (M) LOI ST551356 (CHGQ, Ch ITF, Ch IB, Ch ITT) - lemon



RHÉA DE LA PASSEE DE L'EPERON 2000-09-08 (F) LOF 156056/29333 - lemon



RADENTIS ZUM 2002-07-08 (M) LOI LO02161851 (Camp. Tr. (Ch GQ), Camp. Int. Lav., Camp. Ital. Lav.) - lemon



BRILLA DELLA VECCHIA IRLANDA 2003-08-01 (F) LOF 176519/32650 (TR) - bluebelton



ARNO 1988-04-17 (M) LOI ST374735 (Ch. Int. Lav., Camp. Ripr., Ch. Ital. Lav.) - lemon



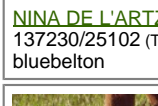
INDIRA 1990-06-01 (F) LOI ST423625 (Ch IT) - lemon



RADENTIS D'ESPANA 1995-05-22 (M) LOE 990823 (Ch IT B, Ch GQ) - lemon



NINA DE L'ARTZ 1997-04-07 (F) LOF 137230/25102 (TR, CHES.B, CHIT.B) - bluebelton



FIERO 1996-08-10 (M) LOI ST551356 (CHGQ, Ch ITF, Ch IB, Ch ITT) - lemon











GIBELTARIK BLONDIE 2000-12-11 (F) LOI LO02122551 (CHIT.T) - lemon



RADENTIS COBRA 2000-06-30 (M) LOI LO0128791 (Camp. Tr. (Ch GQ)) - lemon



GEA 1996-02-13 (F) LOI ST540438 - bluebelton

<p>Mère <u>CADIX DE L'ECHO DE LA FORET</u> 2007-06-20 (F) LOF 193221/37703 - lemon</p>	<p><u>PALAZIENSIS RAMBO</u> 1999-11-01 (M) LOI LO0060896 (Ch W0F/ICH, IT T, ITF, Camp. Tr. (Ch GQ), CH(ES)T, CH(GB)T) - lemon</p> 	<p><u>PALAZIENSIS PEPE</u> 1997-07-03 (M) LOI LO99203608 - liver</p> 	<p><u>GUERCINO DELLA FRATTONA</u> 1996-05-07 (M) LOI ST554737 - bluebelton</p>
	<p><u>SAÏDA DE L'ECHO DE LA FORET</u> 2001-07-01 (F) LOF 160674/30214 (CH A, CH CS) - lemon</p> 	<p><u>LADY</u> 1994-04-30 (F) LOI ST499069 (Ch A) - bluebelton</p>	<p><u>IRAK DEI LADERCHI</u> 1990-01-10 (M) LOI ST411384 - tricolore</p>
	<p><u>LIDER DE PLAYABARRI dit LEADER</u> 1996-11-01 (M) LOE 856545 (Ch A, Ch T, Tr GQ) - lemon</p> 	<p><u>PALU'</u> 1993-09-04 (M) LOE 662202 (Tr GQ) - lemon</p> 	<p><u>TESSA DELLA BASSANA</u> 1995-02-08 (F) LOI ST515986 - tricolore</p>
	<p><u>NADE DE L'ECHO DE LANVAUX</u> 1997-04-14 (F) LOF 138295/26034 (TR, CH A, CH T) - lemon</p> 	<p><u>HYPER DE L'ECHO DE LA FORET</u> 1992-01-01 (M) LOF 111469/16750 (CH T, CH A, TR GQ) - lemon</p> 	<p><u>GRACKEL</u> 1991-05-01 (F) LOF 109008/18375 (TR, CH P, CH T) - tricolore</p> 

Eleveur : GRALL HUBERT
Cotation : 1
Tatouage : 170YFL
Sang italien (estimation) : 92 %
Estimation des points au pédigrée : 45

Taux de consanguinité (estimation) : 1.7 %

RADENTIS GIAN (5,6,7,7,8,8,8,8 X 5) : 0.005447
SWING DELLA VECCHIA IRLANDA (5,6,6,7 X 5) : 0.004669
DECOR LOI (6,7,7,8,8,8,8,8,8,8 X 6,7,7,8,8) : 0.004120
DUN DEL MESCHIO (7,8,8,8,8 X 7,8,8,8,8) : 0.000854
ALMER (7 X 5) : 0.000488
EMO DELLA TRAPPOLA (7,8 X 6) : 0.000366
ROVAL MOZART (7 X 6,7) : 0.000366
ATOS DELLE TORRICELLE (7,8,8,8 X 7) : 0.000305
BASSINO (7 X 6) : 0.000244
HALOA DELLA VECCHIA IRLANDA (6,7,7,8,8 X 6) : 0.000122
ARO (8,8 X 6) : 0.000122
ORFEO DELLA TRAPPOLA (8,8 X 7) : 0.000061
AMBRA DEL DIANELLA (8 X 7) : 0.000061
CRISMANI OLAF (8 X 8,8) : 0.000031



Note : les données ne sont pas garanties. Elles ont été entrées par les membres sans garantie d'exactitude.

