








OVEST DI CRETA ILEKTRA

2018-03-18 (F) BEK 164145
Couleur : White Black (bluebelton)
[fiche affixe](#)



<p>Père FOX 2014-06-25 (M) BEK 134412 - bluebelton</p> 	<p>RALF (M) BEK 077189 - bluebelton</p>	<p>VITO (M) BEK 042056 - bluebelton</p>	<p>OTELLO DI TORRE MASINO 1999-01-07 (M) LOI LO9984511 - bluebelton</p> <p>ASPA (F) BEK 011039 - bluebelton</p>
	<p>RAISSA (F) BEK 108759 - bluebelton</p>	<p>BESINO'S PANTHOS 2007-08-15 (M) BEK 075540 (CH GQ, CH IT) - bluebelton</p> 	<p>DONA DI BOJIOGLOU (F) BEK 050144 - bluebelton</p>
<p>Mère RANIA 2011-08-10 (F) BEK 108758 - bluebelton</p> 	<p>BESINO'S PANTHOS 2007-08-15 (M) BEK 075540 (CH GQ, CH IT) - bluebelton</p> 	<p>KAPO' 2003-11-10 (M) LOI LO0439835 (Ch IT GQ) - bluebelton</p> 	<p>KAPO' 2003-11-10 (M) LOI LO0439835 (Ch IT GQ) - bluebelton</p> <p>TZOUMAKA ANIMUS ILIA (F) BEK 059052 - tricolore</p> 
	<p>VERTHA (F) BEK 077186 - bluebelton</p>	<p>VERTHA (F) BEK 077186 - bluebelton</p>	<p>KAPO' 2003-11-10 (M) LOI LO0439835 (Ch IT GQ) - bluebelton</p> <p>TZOUMAKA ANIMUS ILIA (F) BEK 059052 - tricolore</p> 
		<p>VITO (M) BEK 042056 - bluebelton</p>	<p>OTELLO DI TORRE MASINO 1999-01-07 (M) LOI LO9984511 - bluebelton</p> <p>ASPA (F) BEK 011039 - bluebelton</p>
		<p>DONA DI BOJIOGLOU (F) BEK 050144 - bluebelton</p>	<p>BALGI'S DENNIS 2000-04-08 (M) LOI LO0098320 - bluebelton</p> <p>ALINA (F) BEK 029531 - tricolore</p>

Eleveur : Liviakis Nektarios / Propriétaire : Georgakis Antreas
Sang italien (estimation) : 79 %
Estimation des points au pédigrée : 12

Taux de consanguinité (estimation) : 19.1 %

BESINO'S PANTHOS (3 X 2) : 0.062988

VERTHA (3 X 2) : 0.062500

VITO (3,4 X 3) : 0.031372

DONA DI BOJIOGLOU (3,4 X 3) : 0.031250

RALF DEL DIANELLA (6,7,7 X 6,6,8,8) : 0.001343

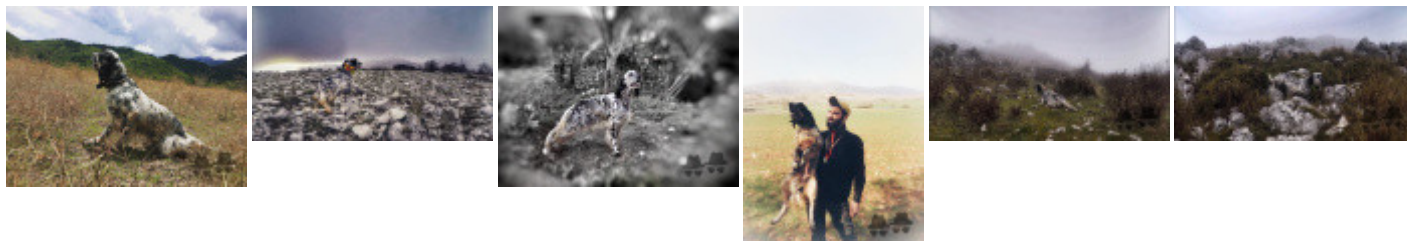
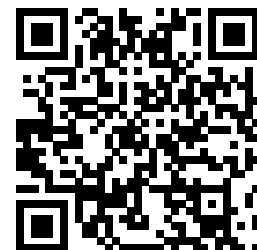
DECOR LOT (8,8,8,8 X 7,8,8,8,8) : 0.000458

RADENTIS GIAN (7,8,8,8 X 7,7,8) : 0.000458

LEM DEL RESEGONE (7,8,8,8 X 7,7,8,8) : 0.000336

OLAF DEL TRE PONTI (8,8 X 7,8) : 0.000092

FRANCINI'S RAS (8 X 8,8) : 0.000031



Note : les données ne sont pas garanties. Elles ont été entrées par les membres sans garantie d'exactitude.