

MORO DE AREGORATA

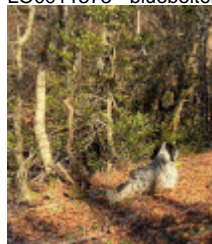
2014-05-24 (M) LOE 2218457
Couleur : Tricolor (tricolore)
[fiche affixe](#)



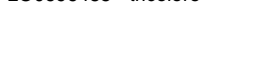
Père
ATTILA
2009-04-01 (M)
LOE 2081627
- bluebelton



CLARENCE 2008-02-10 (M) LOI
LO0911373 - bluebelton



EMERSON 2006-03-24 (M) LOI
LO0696485 - tricolore



SAMNITICUS MARGO 2002-07-27
(F) LOI LO02154010 - bluebelton



MARTIANISIUM FERRE 2000-02-14
(M) LOI LO0065696
(Ch. Ital. Lav., Ch. Int. Lav.) -
tricolore



MARTIANISIUM NIKITA 2001-12-15
(F) LOI LO0229990 - bluebelton



SAMNITICUS ASSIA 1999-09-19 (F)
LOI LO99203031 - tricolore



NERO 1997-03-29 (M) LOI
LO9817889 (Ch T, Ch GQ) - bluebelton



GUFO DI VAL DI CHIANA
1994-04-01 (M) LOI
ST514177 (Ch GQ) -
bluebelton



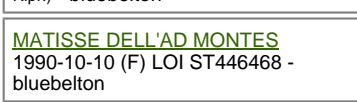
BALU DELL'AD MONTES 2000-11-20
(F) LOI LO01113913 - bluebelton



PICASSO DELL'AD MONTES
1994-04-13 (F) LOI ST515414 -
tricolore



VANGOGH DELL'AD MONTES
1992-07-30 (M) LOI ST463291 (Camp.
Ripr.) - bluebelton



MATISSE DELL'AD MONTES
1990-10-10 (F) LOI ST446468 -
bluebelton



VERDI DE AREGORATA 2000-04-15
(M) LOE 1199212 - bluebelton



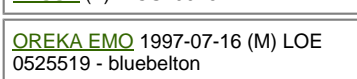
LEFANTA SNORRE (M) IKCT04490
(FTCh (IRL))



LEFANTA SPECKY (M)
(FTCh (USA))



KASSY (F) IKCS19946



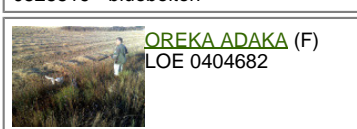
Mère
TRAVIATA
2011-05-28 (F)
LOE 2046557
- tricolore



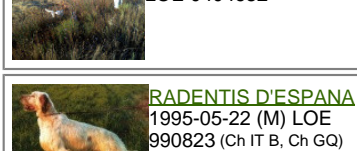
NUMANCIA DE AREGORATA
llamada **NUMA** 1997-05-16 (F) LOE
923880 - tricolore



OREKA EMO 1997-07-16 (M) LOE
0525519 - bluebelton



OREKA ADAKA (F)
LOE 0404682



BRISCA (F) LOE 1790468 -
bluebelton



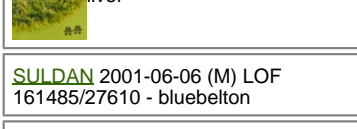
CAPO DE LA ARMUÑA 1998-10-17
(M) LOE 1061524 (Ch P, CHITc(04),
TrCP(E01), TrPR(E04)) - bluebelton



RADENTIS D'ESPANA
1995-05-22 (M) LOE
990823 (Ch IT B, Ch GQ)
- lemon



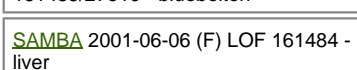
MAGIS DORIANA
1995-01-09 (F) LOE 818214 -
liver



VIXI DE ALENERGI (F) LOE 1511547



SULDAN 2001-06-06 (M) LOF
161485/27610 - bluebelton



SAMBA 2001-06-06 (F) LOF 161484 -
liver

[[Lien...](#)] / Eleveur : JUAN RUIZ / Propriétaire : JUAN RUIZ (606211228, aregorata@gmail.com)

Puce : 941000017066693

Sang italien (estimation) : 80 %

Estimation des points au pédigrée : 7

Taux de consanguinité (estimation) : 1 %

[DECOR LOT](#) (6,7,7,8 X 6,7,7,8,8,8,8,8) : 0.003357

[RADENTIS GIAN](#) (6,6,8 X 7,7,7,7) : 0.002197

[FRANCINI'S LUCA](#) (7,7,7,7 X 7,7) : 0.000977

[DUN DEL MESCIO](#) (8,8,8,8,8 X 7,8,8,8,8) : 0.000885

[RUDY DEL DIANELLA](#) (6,6,8,8 X 8,8) : 0.000488

[FRANCINI'S RAS](#) (6,6,8,8 X 8,8) : 0.000488

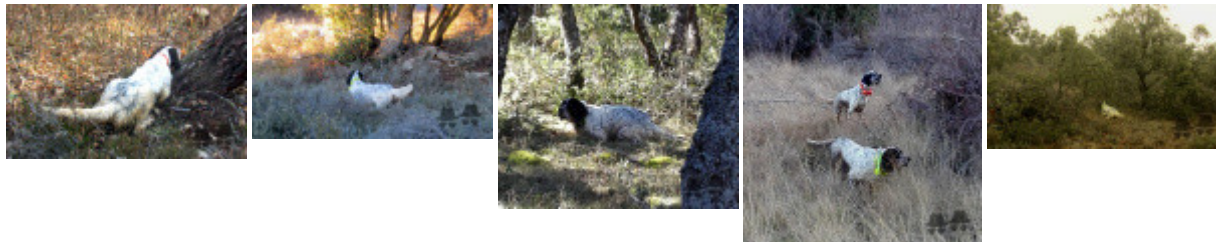
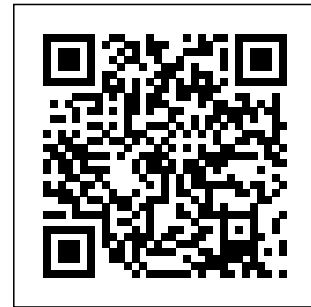
[FRANCINI'S SALLY](#) (7,7 X 7,7) : 0.000488

[DEM](#) (8,8,8,8,8 X 8,8,8,8) : 0.000366

[OLAF DEI TRE PONTI](#) (7,8,8 X 8,8) : 0.000244

[ROSETTE](#) (8,8 X 8,8) : 0.000122

[ORFEO DELLA TRAPPOLA](#) (7,8 X 8) : 0.000092



Note : les données ne sont pas garanties. Elles ont été entrées par les membres sans garantie d'exactitude.