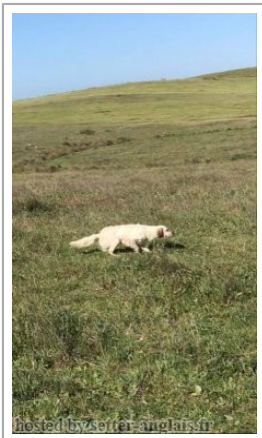


ORELLA DA EIRA D'AIRE

2018-12-26 (F) LOP 563926
Couleur : Fau.PBl.Env. (lemon)
[fiche affixe](#)

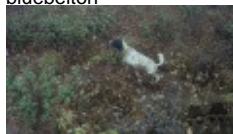


Père
LOTTUS DA EIRA D'AIRE
2015-05-05 (M)
LOP 525310
- lemon



DENDABERRI PRINCE 2013-09-26
(M) LOE - bluebelton

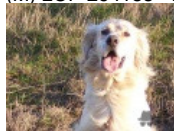
DENDABERRI JAI 2007-03-12 (M)
LOE 1704343 (TrCP, TrPR, TrBC) -
bluebelton



DENDABERRI KELLY 2008-09-01 (F)
LOE 1823430 - bluebelton



SON DOS POTINHOS 2019-04-26
(M) LOP 264188 - lemon



CARPA DO VALE VIGA (F) LOP
382421 - lemon

PALAZIENSIS RAMBO
1999-11-01 (M) LOI
LO0060896 (Ch W0F/CH, IT T,
ITF, Camp. Tr. (Ch GQ), CH(ES)T,
CH(GB)T) - lemon



**UMBLANA DEL
CAVALDROSSA**
2000-06-01 (F) LOI
LO0336882 -
bluebelton

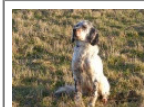


**LOTHAR DEI
LADERCHI** 2004-10-06
(M) LOI LO0541557
(CH IB) - tricolore

DENDABERRI DUSSI (F) LOE
1265657







OURSIN DE L'ECHO DE LA FORET
1998-03-24 (M) 142117 (TR CHGQ) -
tricolore

GEMA DOS POTINHOS (F) LOP
225009 (Titres:)



UREX (M) LOP 306767

ESTOLA DA QUINTA DO MEIRINHO
2023-06-15 (F) LOP 289561 -
bluebelton

<p>Mère</p> <p><u>MAGDA DA EIRA D'AIRE dit MYSHA</u> 2016-04-12 (F) LOP 530328 - bluebelton</p>	<p><u>GIL DO VALE VIGA</u> 2011-09-26 (M) LOP 458494 - bluebelton</p> 	<p><u>ESSO DO VALE VIGA dit MESTRE ESSO</u> 2009-04-07 (M) LOP 413581 - tricolore</p> 	<p><u>UREX</u> (M) LOP 306767</p> 
	<p><u>JADE</u> 2014-02-02 (F) LOP 498587 - liver</p>	<p><u>RIBERA DEL ADAJA BECA</u> 2009-08-15 (F) LOE 1922758 - lemon</p> 	<p><u>ESTOLA DA QUINTA DO MEIRINHO</u> 2023-06-15 (F) LOP 289561 - bluebelton</p>
		<p><u>RADENTIS PIRLO</u> 2009-06-12 (M) LOI LO106020 (Ch P) - bluebelton</p> 	<p><u>LIRA DE FAY DE MONTEVIRIDIO</u> (F) LOE 1634408</p>
		<p><u>NERA</u> 2007-02-13 (F) LOI LO0795812 - bluebelton</p>	<p><u>RADENTIS INDIO</u> 2006-01-12 (M) LOI LO0653000 - lemon</p> 
			<p><u>AMBRA</u> 2004-07-21 (F) LOI LO0519780 - bluebelton</p>
			<p><u>AGO</u> 2001-07-01 (M) LOI LO01205598 - lemon</p>
			<p><u>VISPATERESA</u> 2005-02-22 (F) LOI LO0595443 - liver</p>

Eleveur : David Mendes Conde
Sang italien (estimation) : 63 %
Estimation des points au pédigrée : 3

Taux de consanguinité (estimation) : 1.9 %

UREX (4 X 4) : 0.007812
ESTOLA DA QUINTA DO MEIRINHO (4 X 4) : 0.007812
NEGUS (6 X 6,7,7) : 0.000977
RADENTIS GIAN (7,7 X 7,8,8,8,8) : 0.000732
CINA DE GONZA LOSA (6 X 7,7) : 0.000488
DECOR LOI (7,8,8,8 X 8,8,8) : 0.000305
KIP OD BENCICA (7,8,8,8 X 8) : 0.000153
FRANCINI'S LUCA (8 X 7,8,8,8) : 0.000153
FATTA OD BENCICA (8,8,8 X 8) : 0.000061
ROVAL MOZART (7,8 X 7) : 0.000061
RADENTIS DIDO (8 X 8,8,8) : 0.000061
ROVAL VIENNA (7 X 7,8) : 0.000061
SWING DELLA VECCHIA IRLANDA (7 X 8) : 0.000061



Note : les données ne sont pas garanties. Elles ont été entrées par les membres sans garantie d'exactitude.

