







**SASHA**

2016-05-01 (F) LOI LO16113393  
Couleur : fegato marrone (liver tricolore)

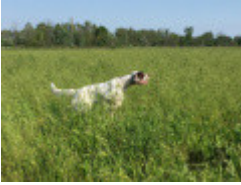


Père <b>SKY</b> 2009-05-13 (M) LOI LO1038478 - bluebelton 	<b>RENO</b> 2001-05-01 (M) LOI LO01143015 - liver tricolore	<b>PIANIGIANI'S DIK</b> 1996-03-10 (M) LOI ST543451 (CH, Ch. Ital. Lav.) - bluebelton	<b>BRITZ</b> 1990-01-22 (M) LOI ST413811 (Ch. Int. Lav., Ch. Ital. Lav.) - bluebelton	
	<b>SARA</b> 2006-03-17 (F) LOI LO0681397 - bluebelton	<b>PERLA</b> 1998-04-20 (F) LOI LO9925937 - liver	<b>POLDO</b> 1991-06-10 (M) LOI ST448287 - liver	<b>SCILLA</b> 1989-10-19 (F) LOI ST409992 - tricolore
Mère <b>CARLA</b> 2013-10-13 (F) LOI LO1432657 - liver tricolore 	<b>INDIO</b> 2011-01-12 (M) LOI LO1123500 - lemon	<b>MANSIS ULISSE</b> 2002-03-06 (M) LOI LO0261184 - bluebelton	<b>KIRA</b> 1996-05-30 (F) LOI ST543173 - tricolore	
	<b>EDBEL GILDA</b> 2006-07-09 (F) LOI LO0715735 - tricolore	<b>MINA</b> 2002-04-28 (F) LOI LO02114133 - bluebelton	<b>FRANCINI'S ZUCCHERO</b> 1995-01-04 (M) LOI ST514465 - bluebelton	<b>EDBEL BRINA</b> 1999-03-26 (F) LOI LO99134119 - bluebelton
	<b>GAIA</b> 2009-08-15 (F) LOI LO1094759 - bluebelton	<b>NOTADO DELLA VECCHIA IRLANDA</b> (M) LOE 2268638 (CH IT GQ, CH(I)GQ (Camp. Trial.)) - liver 	<b>PIANIGIANI'S DIK</b> 1996-03-10 (M) LOI ST543451 (CH, Ch. Ital. Lav.) - bluebelton	<b>FRANCINI'S LOLA</b> 1996-01-30 (F) LOI ST542199 - bluebelton
	<b>CINA</b> 1998-07-30 (F) LOI LO9916838 - tricolore	<b>EDBEL IMPERATORE</b> 2005-05-05 (M) LOI LO05129955 - lemon	<b>FRANCINI'S NOMAR</b> 1998-03-22 (M) LOI LO98133353 ((CHGQ CHITF / CHIT.B)) - liver 	<b>GIBELTARIK            BLONDIE</b> 2000-12-11 (F) LOI LO02122551 (CHIT.T) - lemon 
		<b>FOAN IOSE</b> 2006-06-10 (M) LOI LO077657 (Camp. Ripr.) - bluebelton 	<b>CUNTA</b> 2005-06-13 (F) LOI LO05134528 - bluebelton	
		<b>EDBEL BIGIA</b> 2003-01-04 (F) LOI LO0335282 - lemon	<b>VARENNE</b> 2000-10-07 (M) LOI LO0151270 - lemon	
		<b>FRANCINI'S TORMENTO</b> 1994-06-18 (M) LOI ST506101 (Ch. Ital. Lav.) - tricolore	<b>EDBEL MAIA</b> 1993-04-11 (F) LOI ST483334 - bluebelton	

Eleveur : Trevisan Samuele / Propriétaire : Sovran Fabio  
 Puce : 380260002609470  
 Estimation des points au pédigrée : 5

## Taux de consanguinité (estimation) : 1.7 %

FRANCINI'S LUCA (5,6,6,7 X 5,7) : 0.005493  
DECOR LOT (6,7,8 X 7,8,8,8,8,8,8,8,8,8,8,8) : 0.003082  
DEM (6,7,7,7,7,8 X 6,7,8) : 0.001404  
DUN DEL MESCIO (7,7,7,7,7,8,8,8,8,8,8,8,8 X 7,8) : 0.001190  
FRANCINI'S RAS (6,6,7,7,8 X 7) : 0.000793  
FRANCINI'S DREAM (5,6 X 8,8) : 0.000732  
AKIM (6,8 X 6) : 0.000610  
FRANCINI'S VANITY (7,7,7,8,8,8,8 X 7,8) : 0.000488  
RUDY DEL DIANELLA (6,7,8 X 7) : 0.000427  
LEM DEL DIANELLA (7 X 6,8,8,8) : 0.000427  
LEM DEL RESEGONE (7,8,8,8,8 X 8,8,8) : 0.000366  
EDBEL PAOLA (6 X 7) : 0.000244  
QUERCIA DEI BOIARDI (7 X 6) : 0.000244  
PICENUM ZITO (6 X 7) : 0.000244  
EDO DI CEREIA (7,8,8 X 7) : 0.000183  
MIURA DEI BOIARDI (7,8,8 X 7) : 0.000183  
DIK DELLA MARCIOLA (6,7,7,7,8,8 X 8) : 0.000183  
NEGUS (8 X 7,7) : 0.000122  
MERA DELL'ORSONE (7,7,8,8 X 8) : 0.000092



Note : les données ne sont pas garanties. Elles ont été entrées par les membres sans garantie d'exactitude.

