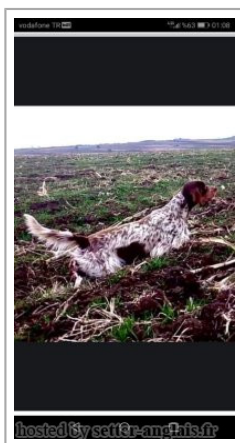


BIRBA

(F) LOF KIF-ES-2164/JR706711ES



Père
INAKI DELLO ZEOLO
 2009-06-18 (M)
 LOI LO09128901
 - lemon



RADENTIS COBRA 2000-06-30 (M)
 LOI LO0128791 (Camp. Tr. (Ch GQ)) -
 lemon



CAPRICE DI LORO PICENO
 2004-08-25 (F) LOI LO0523533 -
 tricolore



LERRY 1997-02-14 (M) LOI
 ST555862 (Ch GQ, Ch IT) - bluebelton



RADENTIS BELLA 1997-01-13 (F)
 LOI ST559827 (IT Ch GQ) - lemon



BIG JIM 2000-12-01 (M) LOI
 LO0188207 (CH GQ, Ch. Int. Lav., Camp.
 Ripr., Ch. Ital. Lav.) - liver



TIGRE DI LORO PICENO 1999-09-25
 (F) LOI LO0049012 - tricolore



ARNO 1988-04-17
 (M) LOI ST374735
 (Ch. Int. Lav., Camp.
 Ripr., Ch. Ital. Lav.) -
 lemon



PICENUM UNGA
 1990-10-02 (F) LOI
 ST430406 (CH GQ) -
 liver



**RADENTIS
 SBRANCO**
 1991-07-01 (M) LOI
 ST448908 (CH IB, Ch.
 Int. Lav.) - lemon

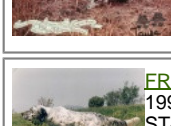


ODE DEL SOLE 1993-09-10 (F) LOI
 ST490145 - liver



LERRY 1997-02-14 (M)
 LOI ST555862 (Ch GQ, Ch
 IT) - bluebelton






RADENTIS TANGA
 1998-09-15 (F) LOI
 LO9958147 - lemon



FRANCINI'S JEFFE
 1993-04-03 (M) LOI
 ST479317 (Ch. Ital. Lav.,
 Ch. Int. Lav., Camp. Ripr.) -
 bluebelton

DARA DI LORO PICENO 1991-02-18
 (F) LOI ST449335 - liver



<p>Mère</p> <p><u>LUNA SA BEDEMA</u> 2011-07-17 (F) JR703750</p> 	<p><u>CRONO DELLE PASTENELLE</u> 2007-07-15 (M) LOI LO0867294 (Camp. Tr. (Ch GQ), Camp. Ital. Lav.) - liver</p> 	<p><u>GIBELTARIK EMERSON</u> 2003-04-04 (M) LOE 1561594 (CH.Int.GQ) - liver</p> 	<p><u>GIBELTARIK BORIS</u> 2000-12-14 (M) GKC02014 (Ch T GQ) - liver</p> 	
		<p><u>ALFA</u> 2005-04-26 (F) LOI LO0598256 - liver</p>	<p><u>DENNY</u> 1995-02-11 (F) LOI ST515750 - liver</p>	<p><u>ANTO</u> 2002-01-07 (M) LOI LO0246001 (Ch Italie T, CH IT) - bluebelton</p> 
		<p><u>OXA SA BEDEMA</u> (F) JR70290</p>	<p><u>TZOUMAKA ANIMUS INTIO</u> (M) BEK 61293</p>	<p><u>RODESIA</u> 2002-06-10 (F) LOI LO0350161 - bluebelton</p>
			<p><u>PANDORA SA BEDEMA</u> 2008-01-07 (F) JR701873ES - lemon</p> 	<p><u>PIVIDORI'S GIOTTO</u> 1997-06-12 (M) LOI LO0114200 (Camp. Tr. (Ch GQ), CH IT) - bluebelton</p> 
			<p><u>TZOUMAKA ANIMUS MANIA</u> (F) BEK 032242 - bluebelton</p>	
			<p><u>BIG JIM</u> 2000-12-01 (M) LOI LO0188207 (CH GQ, Ch. Int. Lav., Camp. Ripr., Ch. Ital. Lav.) - liver</p> 	
			<p><u>ALBA SA BEDEMA</u> (F) 700194</p> 	

Sang italien (estimation) : 100 %
Estimation des points au pédigrée : 24

Taux de consanguinité (estimation) : 6.2 %

BIG JIM (3 X 4) : 0.016724
ARNQ (4,5,6 X 5,6,6,7) : 0.011230
LERRY (3,4 X 5) : 0.007950
PICENUM UNGA (4,5 X 5,6) : 0.005859
RADENTIS SBRANCO (4,5 X 6,6) : 0.005188
DECOR LOT (6,7,7,7,7,7,7,8,8,8,8,8 X 8,8,8,8,8,8,8) : 0.004608
ODE DEL SOLE (4 X 6) : 0.002014
RADENTIS GIAN (6,6,7 X 7,7,8,8,8,8) : 0.001465
RADENTIS BORG (5,6 X 6,7,7) : 0.001465
FRANCINI'S LUCA (5 X 6) : 0.000977
STAR (5,6 X 6,7,7) : 0.000732
DUN DEL MESCHIO (7,7,8,8,8,8,8,8,8 X 8,8) : 0.000671
ROYAL MOZART (6 X 7,7,8) : 0.000610
AMBO DEL VARO (5 X 7,7) : 0.000504
HALOA DELLA VECCHIA IRLANDA (6,7,7,8,8 X 7,8,8,8) : 0.000488
ROYAL VIENNA (6,6 X 7,8,8) : 0.000488
EMO DELLA TRAPPOLA (6,7 X 7,8,8,8) : 0.000366
RADENTIS DIDO (6,7 X 8,8,8) : 0.000183
FLAY DEL DIANELLA (6,7 X 7,8,8) : 0.000183
DEM (6 X 7,8) : 0.000122
FRANCINI'S VANITY (7,7 X 8) : 0.000061
ROYAL FLY (7,8 X 8,8) : 0.000061
OLA DELLA MARCIOLA (8 X 8) : 0.000031



Note : les données ne sont pas garanties. Elles ont été entrées par les membres sans garantie d'exactitude.

