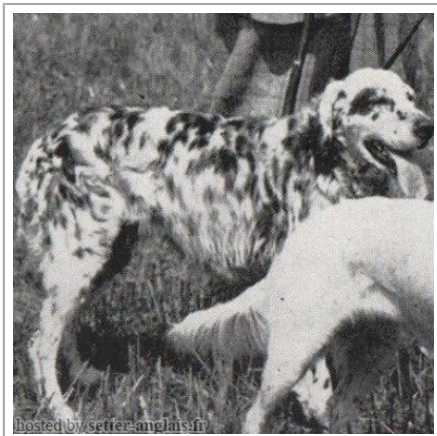




BARONESS WIND'EM

1949-01-20 (F) KCSB443AH
Couleur : Noi.PBl.Env (bluebelton) / Titres : FTCh
[fiche affixe](#)

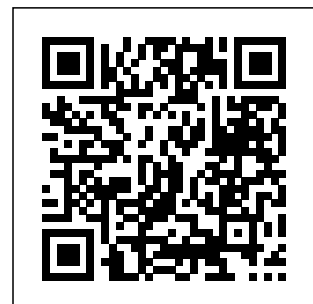


Père YANKEE WIND'EM 1942-09-01 (M) KCSB13334/49 - lemon	HORSFORD NOBLE WINDEM 1933 (M) FDSB230458	HIGHTONE TONY 1925-11-06 (M) FDSB134108 (Champion) - bluebelton	COUNT'S TONY ANTONIO 1914-02-03 (M) FDSB36830 - bluebelton	
		PALIACHO'S JESSIE B 1925-08-03 (F) FDSB.139885 - bluebelton	GIBRALTAR ROD'S LADY 1923-05-17 (F) FDSB90362 - bluebelton	
	HORSFORD DASHING ROSELIND 1935 (F) KCSB466SS-FDSB241601 - bluebelton	HORSFORD DASHING PRINCE 1926 (M) FDSB241281	DYKE'S PHIL ESSIG 1924-07-10 (M) FDSB103769 - bluebelton	PALIACHO POLLY MOHAWK (F) FDSB113631
		HORSFORD DASHING LADY 1926 (F) FDSB241323	PINTO BONDHU A.K.A. PONTO BONDHU (M) JEWELL BONDHU (F)	DASHING PRINCE (M) QUAIL BONDHU (F)
Mère MARIE WIND'EM 1941 (F) KCR10261/49 - lemon	HORSFORD COUNT DAVE (M) FDSB-241528	DAN WIND'EM 1924-09-06 (M) FDSB241264-KCSB480GG 	TAMBOURINE 1921-07-26 (M) FDSB57849	
		HORSFORD COUNTESS DOLE (F) FDSB241527	PEGGY WINDEM A.K.A. HORSFORD COUNTESS MACCA (F)	
	BONNIE WIND'EM (F)	ROB'S MOHAWK BOY (M) FDSB186574	RODNEY'S DON WIND'EM 1924-04-10 (M) FDSB125046 - bluebelton	PALIACHO'S JESSIE B 1925-08-03 (F) FDSB.139885 - bluebelton
		HORSFORD COUNTESS DOT (F) FDSB241600	 DAN WIND'EM 1924-09-06 (M) FDSB241264-KCSB480GG	HORSFORD COUNTESS GABY (F) LOI FDSB241320

Sang italien (estimation) : 6 %
Estimation des points au pédigrée : 18

Taux de consanguinité (estimation) : 1.7 %

PALIACHO'S JESSIE B (3 X 4) : 0.016235
TONY BOY A.K.A. ROY WINDEM (6,7,8,8 X 8) : 0.000244
MOHAWK II (6,7,8,8,8 X 8) : 0.000183
LADY'S COUNT GLADSTONE (7,7,8 X 8) : 0.000153
COUNT GLADSTONE IV (8,8,8 X 8) : 0.000092
DAN'S LADY (8,8 X 8) : 0.000061
FREE LANCE (7,7 X 8) : 0.000061
MOMONEY (7,8 X 8) : 0.000031





Note : les données ne sont pas garanties. Elles ont été entrées par les membres sans garantie d'exactitude.