

KIRA

2010-06-01 (F) LOI LO10133953
Couleur : BIANCO ARANCIO (lemon)



hosted by setter-anglais.fr

Père
CODY
2003-04-20 (M)
LOI LO03103631
- bluebelton



CANON PICETTO AROGNO
1997-04-25 (M) LOI LO0290473 (Ch.
Ital. Lav., Ch. Int. Lav.) - bluebelton



DIANA 2001-01-03 (F) LOI
LO0186461 - liver tricolore

IRGO DEL CENTRO MARCHE
1989-11-01 (M) LOI ST408100 (Ch
Suisse T) - tricolore

DOROTY DELL'ACQUA FREGIA (F)
LOI ES0037503

PQ 1995-09-09 (M) LOI ST533599 -
tricolore



BRINA 1993-11-24 (F) LOI ST494853
- bluebelton



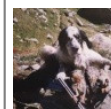
LIZ DEL DIANELLA
1984-01-07 (M) LOI
ST281154 (Ch Italie T)
- tricolore

MOLLY DEL DIANELLA 1988-06-05
(F) LOI ST376798 - tricolore



DINGO 1985-02-06 (M)
LOI ST300237 (Ch Italie T) -
BIANCO, ORECCHIE
NERE, PUNTA MUSO

BEA DEL BOIARDI 1986-06-01 (F)
LOI ST333112 - bluebelton










**VOLO DI
CROCEDOMINI**
1993-01-06 (M) LOI
ST477057 - tricolore

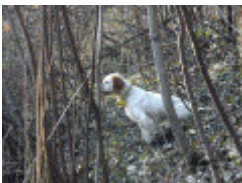
TANA 1992-03-28 (F) LOI ST458105 -
bluebelton

DIK 1990-06-04 (M) LOI ST422136 -
bluebelton

BRINA 1989-07-10 (F) LOI ST400899
- bluebelton

<p>Mère <u>DIANA</u> 2006-05-15 (F) LOI LO06105077 - bluebelton</p>	<p><u>MERKS</u> 1999-05-06 (M) LOI LO99147141 - bluebelton</p>	<p><u>ASTRO</u> 1994-01-10 (M) LOI ST494869 - lemon</p>	 <p><u>ARNO</u> 1988-04-17 (M) LOI ST374735 (Ch. Int. Lav., Camp. Ripr., Ch. Ital. Lav.) - lemon</p>
		<p><u>CORA</u> 1996-04-22 (F) LOI ST538777 - bluebelton</p>	 <p><u>NEGUS</u> 1988-09-05 (M) LOI ST382982 (Camp. Tr. (Ch GQ), Camp. Int. Lav (Ch I T)) - bluebelton</p>
			<p><u>BETTI</u> 1993-10-27 (F) LOI ST494344 - lemon</p>
	<p><u>IARA ALESS SETTER</u> 2000-08-12 (F) LOI LO0128660 - lemon</p>	 <p><u>LERRY</u> 1997-02-14 (M) LOI ST555862 (Ch GQ, Ch IT) - bluebelton</p>	 <p><u>ARNO</u> 1988-04-17 (M) LOI ST374735 (Ch. Int. Lav., Camp. Ripr., Ch. Ital. Lav.) - lemon</p>
			 <p><u>PICENUM UNGA</u> 1990-10-02 (F) LOI ST430406 (CH GQ) - liver</p>
		<p><u>FRANZINI GIUDI</u> 1996-12-10 (F) LOI ST553219 - lemon</p>	 <p><u>RADENTIS SBRANCO</u> 1991-07-01 (M) LOI ST448908 (CH IB, Ch. Int. Lav.) - lemon</p>
		 <p><u>FRANZINI BETTI</u> 1989-08-01 (F) LOI ST404125 (CH GQ) - liver</p>	

Eleveur : Todeschini Dante / Propriétaire : Rebutini Levi
Puce : 380260010104493
Estimation des points au pédigrée : 9



Note : les données ne sont pas garanties. Elles ont été entrées par les membres sans garantie d'exactitude.