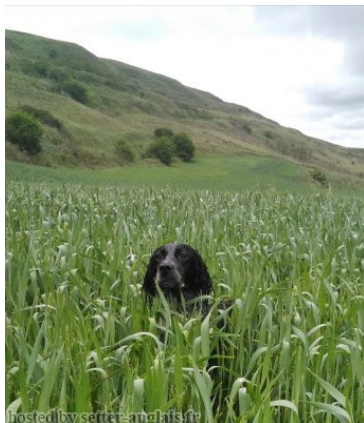


LANDABERRI ALMA

2017-04-13 (F) LOE 2374630
 Color: Blanco y negro (bluebelton)
 Kennel

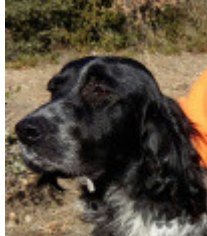


hosted by setter-anglais.fr

NOLO DEL ZAGNIS 2012-07-05 (M)
 LOI LO12129055 (CH GQ, CH IT, Camp. Ital.
 Lav. (CH T)) - bluebelton



Father
LANDABERRI NERÓN 2016-03-18 (M)
 LOE 2309486 - bluebelton



LANDABERRI LORETTE 2013-05-28
 (F) LOE 2169957 - bluebelton



GIAR D'ALERIA 2008-11-15 (M) LOI
 LO09120198 (Camp. Soc., Ch. Ita. Lav.) -
 lemon



ALCE DEL ZAGNIS 2009-10-27 (F) LOI
 LO1054031 - lemon



GRANT DU VAL DE RONCEVEAUX
 2011-02-27 (M) LOF 214232 - liver



DENDABERRI NORA I 2011-06-28 (F)
 LOE 2052083 - Blanco chocolate



LORD DEL ZAGNIS 2002-09-30 (M)
 LOI LO02167262 (Ch. Ital. Lav., CH GQ, Ch.
 Int. Lav.) - lemon



FATA DI BOSCOBANCO 2005-08-04
 (F) LOI LO0628070 (Ch. Ital. Lav.) -
 bluebelton

ZAC DEL ZAGNIS 2004-02-08 (M) LOI
 LO04103934 - bluebelton

MIMI' DEL ZAGNIS 2004-02-08 (F) LOI
 LO04103900 - tricolore

ERNEE DES SEPT PROVINCES
 2009-06-18 (M) LOF 206858/34324 (CH
 T, TR GQ) - bluebelton











AS DES SEPT PROVINCES
 2005-07-15 (F) LOF 184044/40930 -
 Noi PBI Env Mouv



GIBELTARIK BORIS 2000-12-14 (M)
 GKC02014 (Ch T GQ) - liver



GIRA 2006-07-07 (F) LOE 1651091 -
 bluebelton

| | | | | |
|--|--|--|--|---|
| <p>Mother</p> <p>LANDABERRI BOIRA 2015-04-28 (F) LOE 2269836 - bluebelton</p>  | <p>GRANT DU VAL DE RONCEVEAUX 2011-02-27 (M) LOF 214232 - liver</p>  | <p>ERNEE DES SEPT PROVINCES 2009-06-18 (M) LOF 206858/34324 (CH T, TR GQ) - bluebelton</p>  | <p>RADENTIS BILLO 2001-10-25 (M) LOE 1376724 (Ch GQ) - lemon</p>  | |
| | <p>AS DES SEPT PROVINCES 2005-07-15 (F) LOF 184044/40930 - Noi PBI Env Mouv</p>  | <p>SAPHIR DU CLOS SAINTE CATHERINE 2001-05-01 (M) LOF 158958/25561 (TR, CH A) - bluebelton</p>  | <p>POLY DES SEPT PROVINCES 2001-08-08 (F) LOF 150830/28240 - bluebelton</p> | <p>MAMBO (M) LOE 941203</p> |
| | <p>LARA 2006-04-13 (F) LOE 1629378 - bluebelton</p>  | <p>TILO (M) LOE 1268843</p> | <p>SATI (F) LOE 652370</p> | <p>KANPOGANE HUR (M) LOE 552852</p>  |
| | | <p>NIEBLA (F) LOE 1321431</p> | <p>LUNA (F) LOE 1042878</p> | |

Italian breeding (estimated): 65%

Points in pedigree: 11

Estimated coefficient of inbreeding: 7.4 %

[GRANT DU VAL DE RONCEVEAUX](#) (3 X 2) : 0.068848

[RADENTIS GIAN](#) (7,8,8,8,8,8 X 7,7,7,7,8) : 0.001434

[DECOR LOT](#) (8,8,8,8,8 X 8,8,8,8,8,8,8,8) : 0.001221

[RADENTIS SBRANCO](#) (6,6,8 X 5) : 0.001221

[RADENTIS ALA](#) (6,8 X 5) : 0.000244

[RADENTIS BORG](#) (7,7,7 X 6,6) : 0.000244

[DEM](#) (8,8 X 8,8) : 0.000122

[ROVAL MOZART](#) (7 X 7) : 0.000122

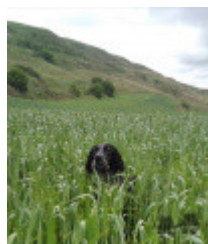
[RADENTIS DIDO](#) (8,8 X 7,8,8) : 0.000092

[FRANCINI'S LUCA](#) (8,8 X 7,8) : 0.000092

[LEM DEL RESEGONE](#) (8 X 7,8) : 0.000092

[NEGUS](#) (7 X 8) : 0.000061

[ORFEO DELLA TRAPPOLA](#) (8 X 7) : 0.000061



Note: data are entered by members. There is no guarantee about accuracy of data.