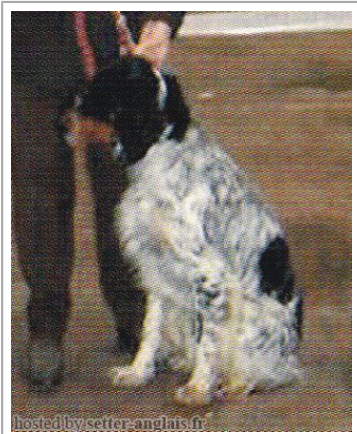


STONE DE TIERCIM

2001-02-28 (F) LOF 159472/30551
Couleur : Noi.PBl.Env (bluebelton)
[fiche affixe](#)



hosted by setter-anglais.fr

FRANCINI'S ROCKY 1989-02-25 (M)
LOI ST409893 (Ch. Int. Lav., Ch. Ital. Lav.) -
bluebelton



Père
FRANCINI'S REX
1998-09-10 (M)
LOF 157479/24421
- bluebelton

FRANCINI'S FRAGOLA 1995-06-17
(F) LOI ST527967 (Ch IT T B) -
bluebelton

FRANCINI'S ASTON 1986-01-19 (M)
LOI ST325293 (Camp. Ripr., Ch. Int. Lav.,
Ch. Ital. Lav.) - bluebelton



FRANCINI'S ODETTTE 1984-10-26 (F)
LOI ST301903 (Camp. Ripr.) - bluebelton

FRANCINI'S LUCA 1989-07-08 (M)
LOI ST404483 (Ch. Ital. Lav., CH GQ, Ch.
Int. Lav., Camp. Ripr.) - tricolore



FRANCINI'S SALLY 1986-01-19 (F)
LOI ST325298 (Camp. Ripr.) - bluebelton

FRANCINI'S RAS
1982-10-26 (M) LOI
ST254436 (Camp. Ripr.) -
bluebelton



RUDY DEL DIANELLA 1981-09-16 (F)
LOI ST239145 - bluebelton

**OLAF DEI TRE
PONTI** 1981-10-12
(M) LOI ST234864 (CH
L CHINT) - bluebelton



ROSETTE 1981-04-01 (F) LOI
ST229946 - lemon

DEM 1980-08-30 (M)
LOI ST222808 (CH
INT L RIP) -
BIANCO-MACCHIA
NERA OCCHIO







DX-PI

FRANCINI'S LORI 1980-07-21 (F) LOI
ST219787 - BIANCO NERA
PUNTEGGIATA

FRANCINI'S RAS
1982-10-26 (M) LOI
ST254436 (Camp. Ripr.) -
bluebelton



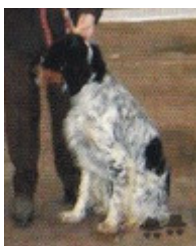
RUDY DEL DIANELLA 1981-09-16 (F)
LOI ST239145 - bluebelton

<p>Mère FRANCINI'S PARME 1998-11-12 (F) LOF 157480/28440 - bluebelton</p>	<p>FRANCINI'S JEFF 1993-04-03 (M) LOI ST479317 (Ch. Ital. Lav., Ch. Int. Lav., Camp. Ripr.) - bluebelton</p> 	<p>FRANCINI'S LUCA 1989-07-08 (M) LOI ST404483 (Ch. Ital. Lav., CH GQ, Ch. Int. Lav., Camp. Ripr.) - tricolore</p> 	<p>DEM 1980-08-30 (M) LOI ST222808 (CH INT L RIP) - BIANCO-MACCHIA NERA OCCHIO</p> <p>DX-PI</p>	
	<p>FRANCINI'S PERLA 1992-01-02 (F) LOI ST455532 - tricolore</p>	<p>FRANCINI'S SALLY 1986-01-19 (F) LOI ST325298 (Camp. Ripr.) - bluebelton</p>	<p>FRANCINI'S LORI 1980-07-21 (F) LOI ST219787 - BIANCO NERA PUNTEGGIATA</p>	<p>FRANCINI'S RAS 1982-10-26 (M) LOI ST254436 (Camp. Ripr.) - bluebelton</p>
		<p>FRANCINI'S DIEGO 1985-07-01 (M) LOI ST315265 (Ch. Int. Lav.) - tricolore</p> 	<p>RUDY DEL DIANELLA 1981-09-16 (F) LOI ST239145 - bluebelton</p>	<p>DEM 1980-08-30 (M) LOI ST222808 (CH INT L RIP) - BIANCO-MACCHIA NERA OCCHIO</p> <p>DX-PI</p>
		<p>FRANCINI'S SAIL 1985-08-13 (F) LOI ST316342 (Ch. Int. Lav., Ch. Ital. Lav., Camp. Ripr.) - tricolore</p> 	<p>NYPHPE DE CAUSSE ET BRUYERE 1977-11-18 (F) LOI ST139211 - lemon</p>	<p>DEM 1980-08-30 (M) LOI ST222808 (CH INT L RIP) - BIANCO-MACCHIA NERA OCCHIO</p> <p>DX-PI</p>
			<p>QUERCIA DEI BOIARDI 1980-11-06 (F) LOI ST222873 - bluebelton</p>	

Eleveur : ROCH BARRASSO
Cotation : 1
Tatouage : 2ARX996
Sang italien (estimation) : 100 %
Estimation des points au pédigrée : 30

Taux de consanguinité (estimation) : 11.1 %

FRANCINI'S SALLY (3 X 3) : 0.033447
FRANCINI'S LUCA (3 X 3) : 0.031250
DEM (4 X 4,4,4) : 0.015625
RUDY DEL DIANELLA (4,4 X 4) : 0.007812
FRANCINI'S RAS (4,4 X 4) : 0.007812
FRANCINI'S VANITY (5,5,5 X 5,5) : 0.005859
LEM DEL RESEGONE (5,5,6,6 X 5,6,6) : 0.004883
BRILL 2 DEL ROVERE (7,8,8,8,8 X 7,7,7,8,8) : 0.001160
TRUEBA DELLA FAGIANA (7,7,7 X 7,7,7,7) : 0.000854
ARTU (6,7,7,7 X 7,7) : 0.000488
ORSONE DELL ORSONE (8,8,8,8 X 8,8,8,8) : 0.000336
MISS 3 DELLE VALLATE (6,7,8,8,8 X 8,8) : 0.000244
NILO DI BELLOSGUARDO (7,8,8,8 X 8,8) : 0.000244
CORA DEL VOLO (7,7,8,8,8 X 7,8,8,8) : 0.000214
BONA DEL ROVERE (8,8,8 X 8,8,8,8) : 0.000214
VAVA DEL TIDONE (8,8,8,8,8 X 8,8,8,8) : 0.000153
ALMAR DELTA (7,7,8,8 X 7,8) : 0.000122
NILO 12 (8 X 7) : 0.000061
VIVO DI BELLOSGUARDO (8,8,8 X 8) : 0.000031
GONZAGHENSIS MUR (8 X 8) : 0.000031



Note : les données ne sont pas garanties. Elles ont été entrées par les membres sans garantie d'exactitude.

