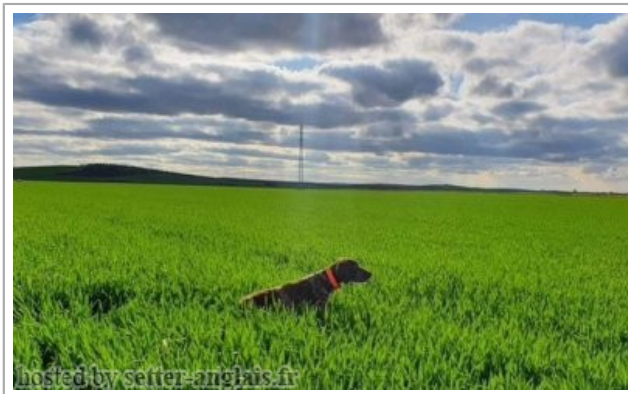



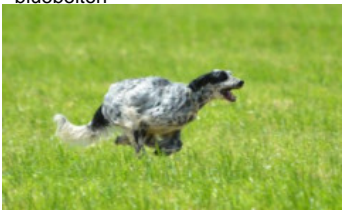
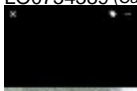







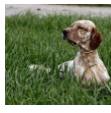





DES ARCANES DE SCOLOPAX PIZZI

2019-07-30 (F) LOF 263183/54403

Couleur : Mar.PBl.Env (liver) / Titres : TAN / Dyspl. : B
[fiche affixe](#)

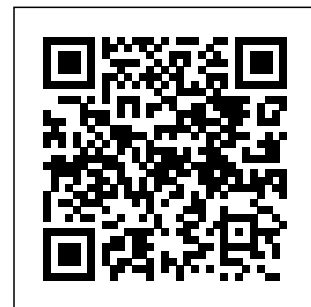
<p>Père CUCCA'S OKEO 2010-09-30 (M) LOI LO10171810 - bluebelton</p>	<p>ORIO 2002-05-14 (M) LOI LO02116390 (Camp. Tr. (Ch GQ)) - bluebelton</p> 	<p>TODAY 2001-05-07 (M) LOI LO01146212 (Camp. Tr. (Ch GQ)) - bluebelton</p> 	<p>PALAZIENSIS PEPE 1997-07-03 (M) LOI LO99203608 - liver</p>  <p>BEA DEL ZAGNIS 1999-07-01 (F) LOI LO0057831 - bluebelton</p>
	<p>CUCCA'S SAXA 2007-01-06 (F) LOI LO0754389 (Camp. Ripr.) - lemon</p>  	<p>TOSCA DELLE OROBICHE 1999-11-19 (F) LOI LO0035313 (Camp. Ripr.) - bluebelton</p>	<p>ILIO CAMP 1992-05-03 (M) LOI ST468051 (Ch. Ital. Lav., Camp. Ripr.) - bluebelton</p> <p>LEDA DELLE OROBICHE 1995-11-07 (F) LOI ST544313 - bluebelton</p>
		<p>RADENTIS NOMAR 1998-03-22 (M) LOI LO98133353 ((CHGQ CHITF / CHIT.B)) - liver</p> 	<p>RADENTIS SBRANCO 1991-07-01 (M) LOI ST448908 (CH IB, Ch. Int. Lav.) - lemon</p> <p>KELLI DELLA MARIKA 1995-08-06 (F) LOI ST530204 (Ch. Ital. Lav.) - bluebelton</p> 
		<p>GIBELTARIK BESSIE 2000-12-11 (F) LOI LO03116018 (Camp. Ripr.) - lemon</p>	<p>DODGE DEL TIRSO 1998-02-14 (M) LOI LO9942918 (Ch IT IT-T, CHIB, Camp. Tr. (Ch GQ)) - bluebelton</p> <p>RADENTIS ERICA 1995-05-25 (F) LOI ST531494 ((CH(I)B)) - lemon</p> 

<p>Mère <u>DES ARCANES DE SCOLOPAX MELLILA</u> 2016-03-08 (F) LOF 244206/49026 - bluebelton</p> 	<p><u>NOLO DEL ZAGNIS</u> 2012-07-05 (M) LOI LO12129055 (CH GQ, CH IT, Camp. Ital. Lav. (CH T), Camp. Ripr., CH(I)B) - bluebelton</p> 	<p><u>GIAR D'ALERIA</u> 2008-11-15 (M) LOI LO09120198 (Camp. Soc., Ch. Ita. Lav.) - lemon</p> 	<p><u>LORD DEL ZAGNIS</u> 2002-09-30 (M) LOI LO02167262 (Ch. Ital. Lav., CH GQ, Ch. Int. Lav.) - lemon</p> 
	<p><u>OLA DEL ZAGNIS</u> 2009-10-25 (F) LOF 243418/47790 - liver</p> 	<p><u>ALICE DEL ZAGNIS</u> 2009-10-27 (F) LOI LO1054031 - lemon</p>	<p><u>FATA DI BOSCOBANCO</u> 2005-08-04 (F) LOI LO0628070 (Ch. Ital. Lav.) - bluebelton</p>
		<p><u>BERRY</u> 2000-12-01 (M) LOI LO0188206 (CH T) - liver</p>	<p><u>LERRY</u> 1997-02-14 (M) LOI ST555862 (Ch GQ, Ch IT) - bluebelton</p>
		<p><u>KITA</u> 2005-03-25 (F) LOI LO06486 - liver</p>	<p><u>RADENTIS TANGA</u> 1998-09-15 (F) LOI LO9958147 - lemon</p> 
			<p><u>BUI DEL ZAGNIS</u> 1994-07-21 (M) LOI ST531735 (Ch. Ital. Lav.) - liver</p> 
			<p><u>EDI</u> 2002-05-15 (F) LOI LO02113354 - liver</p>

Eleveur : RIVERA DAVID
Puce : 250269608409573
Sang italien (estimation) : 100 %
Estimation des points au pédigrée : 30

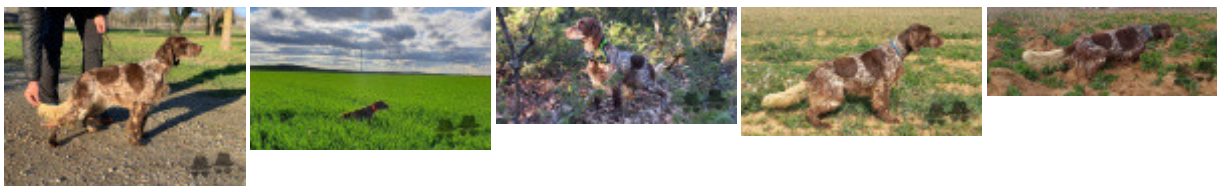
Taux de consanguinité (estimation) : 2.5 %

DECOR LOT (7,7,7,7,7,7,7,8,8,8,8,8,8,8,8 X 7,7,8,8,8,8,8,8,8) : 0.006287
RADENTIS SBRANCO (4,5 X 5) : 0.006226
RADENTIS GIAN (6,6,7,7,7 X 6,7,7,8) : 0.003235
PALAZIENSIS PEPE (4 X 6) : 0.001984
DUN DEL MESCHIO (7,8,8,8,8,8,8,8 X 7,8,8,8) : 0.001312
OLAF (5 X 6) : 0.000977
RADENTIS BORG (5,5,6 X 6) : 0.000977
ASOR (7 X 6,7,7,7,8,8,8,8) : 0.000854
ROYAL MOZART (6,7,7,8 X 7,8) : 0.000824
ROYAL VIENNA (7,7 X 6) : 0.000488
EMO DELLA TRAPPOLA (7,8 X 7,7,8,8,8) : 0.000488
NEGUS (5 X 7) : 0.000488
DEM (7,7 X 8,8,8) : 0.000244
FRANCINI'S LUCA (6 X 7) : 0.000244
ORFEO DELLA TRAPPOLA (7,8 X 8,8) : 0.000122
LEM DEL RESEGONE (8,8 X 8) : 0.000061
FLAY DEL DIANELLA (8 X 7,7,8,8,8) : 0.000061
AMBRA DEL DIANELLA (8 X 8,8) : 0.000061



Résultats concours

Lieu	Date	Type	Epreuve	N°	Juge	Conducteur	Qualif.	Pts
FR	<u>ESCATALENS</u>		TAN		ALARY J-M	VERNHET S	TAN	0
Total des points <u>Challenge Setter-anglais.fr 2021</u>								0
Total des points								0
Coefficients : solo x1, couple x2 / GT x1, GN x2, GS (bécasse, bécassine) x2, GS montagne x3, Printemps x2, Grande Quête x4								



Note : les données ne sont pas garanties. Elles ont été entrées par les membres sans garantie d'exactitude.