

PETRUS DE COMBE SAUNIÈRE

2019-09-08 (M) LOF 264277/45486

Couleur : Noï. PBl.Env.Mou. (bluebelton) / Titres : TAN
[fiche affixé](#)

Père

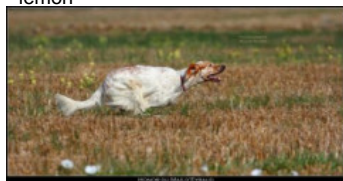
HONOR DU MAS D'EYRAUD

2012-10-31 (M)

LOF 225943/38795

(TR GQ)

- lemon

CONNOR DU MAS D'EYRAUD

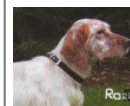
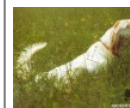
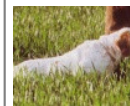
2007-05-10 (M) LOF 191973/35218








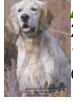





(CH T, Tr GQ) - lemon

DIAM'S DU MAS D'EYRAUD

2008-07-20 (F) LOF 199338/39801

(TR) - lemon

VAD DU MAS D'EYRAUD 2004-05-22
(M) LOF 176886/28894 (TR GQ) -
lemonRADENTIS ODESSA 2003-02-18 (F)
LOF 175115/32206 - lemonRADENTIS BILLO 2001-10-25 (M)
LOE 1376724 (Ch GQ) - lemonUM'LYN DU MAS D'EYRAUD
2003-10-21 (F) LOF 173469/32848 -
lemonRADENTIS BILLO
2001-10-25 (M) LOE
1376724 (Ch GQ) -
lemonROSENN DU MAS
D'EYRAUD
2000-05-29 (F) LOF
154091/28767 (Ch GQ)
- lemonGIBELTARIK BORIS
2000-12-14 (M)
GKC02014 (Ch T GQ) -
liverARIET ALESS SETTER 2000-02-15
(F) LOI LO0058153 - bluebeltonRADENTIS
SBRANCO
1991-07-01 (M) LOI
ST448908 (CH IB, Ch.
Int. Lav.) - lemonRADENTIS ALA 1994-03-15 (F) LOI
ST496649 (Ch T) - lemonFIERO 1996-08-10
(M) LOI ST551356
(CHGQ, Ch ITF, Ch IB, Ch
ITT) - lemonROMANCE DU VAL
DU RUTH
2000-05-10 (F) LOF
153660/28766 (Ch P)
- lemon

<p>Mère <u>JAKETTE DU MAS D'EYRAUD</u> 2014-05-02 (F) LOF 235019/48135 - bluebelton</p>	<p><u>FILOU DU MAS D'EYRAUD</u> 2010-05-29 (M) LOF 209931/37009 (TR, CH GT, CH GQ, CH IT) - bluebelton</p> 	<p><u>USSAN DU MAS D'EYRAUD</u> 2003-10-21 (M) LOF 173466/28517 (CHGQ TRGQ CHITF) - lemon</p> 	<p><u>FIERO</u> 1996-08-10 (M) LOI ST551356 (CHGQ, Ch ITF, Ch IB, Ch ITT) - lemon</p> 
	<p><u>ELVA DU MAS D'EYRAUD</u> 2009-08-13 (F) LOF 206077/41818 (TAN,TR) - bluebelton</p> 	<p><u>CALLIA DU MAS D'EYRAUD</u> 2007-04-16 (F) LOF 191553/38395 - bluebelton</p> 	<p><u>ROMANCE DU VAL DU RUTH</u> 2000-05-10 (F) LOF 153660/28766 (Ch P) - lemon</p> 
		<p><u>CAFOU DU MAS D'EYRAUD</u> 2007-05-29 (M) LOF 192943/32631 (TRGQ) - lemon</p> 	<p><u>ALMER DU MAS D'EYRAUD</u> 2005-05-23 (M) LOF 181352/29977 (CH A, CH P, CH T, CH IT) - lemon</p> 
		<p><u>CLOVER DU MAS D'EYRAUD</u> 2007-05-28 (F) LOF 192933/37694 (TAN) - lemon</p> 	<p><u>UM'LYN DU MAS D'EYRAUD</u> 2003-10-21 (F) LOF 173469/32848 - lemon</p> 
			<p><u>RADENTIS GRETA</u> 2003-05-22 (F) LOF 176226/32585 (TAN) - lemon</p> 
			<p><u>RADENTIS BILLO</u> 2001-10-25 (M) LOE 1376724 (Ch GQ) - lemon</p> 
			<p><u>ROMANCE DU VAL DU RUTH</u> 2000-05-10 (F) LOF 153660/28766 (Ch P) - lemon</p> 

Puce : 250268743070095
Sang italien (estimation) : 87 %
Estimation des points au pédigrée : 33

Taux de consanguinité (estimation) : 11.5 %

RADENTIS BILLO (3,4 X 4) : 0.027649
ROMANCE DU VAL DU RUTH (4 X 4,4,5) : 0.018066
UM'LYN DU MAS D'EYRAUD (3 X 4) : 0.015930
FIERO (4 X 4,5,5,6,6) : 0.015625
RADENTIS GIAN (6,6,6,7,7,7,8,8,8,8,8 X 6,7,7,7,7,8,8,8,8) : 0.008301
DECOR LOT (7,7,7,7,7,8,8,8,8,8,8,8,8,8,8 X 7,8,8,8,8,8,8,8,8,8,8) : 0.005371
GEX DU VAL DU RUTH (5,6,6 X 6,6,6,6,7,7) : 0.004883
RADENTIS SBRANCO (4,5,6 X 5,7,8,8) : 0.004410
ARNO (5,6 X 5,6,6,7,7,8,8) : 0.003174
GIBELTARIK BORIS (4 X 6) : 0.002029
ARIET ALESS SETTER (4 X 6) : 0.001953
AMBO DEL VARO (6,7,7,7 X 7,7,8,8,8) : 0.001465
ODE DEL SOLE (5,6 X 7,7,8,8) : 0.001465
LERRY (5 X 6,7) : 0.000977
RADENTIS BORG (5,5,6,6,7 X 6,6,8) : 0.000610
AOSTE DE KERFEUIL (6,7,7,7 X 7,7,7,7,7,8,8,8,8) : 0.000610
ROYAL MOZART (6,7,7,7 X 7,7,7,8,8) : 0.000610
RADENTIS ERICA (5 X 7,7) : 0.000504
DODGE DEL TIRSO (5 X 7,7) : 0.000488
UNE BELLE DE KERFEUIL (7,8,8,8,8 X 8,8,8,8,8,8) : 0.000183
ALMER (8,8 X 7) : 0.000122
ATOS DELLE TORRICELLE (7,8,8 X 8) : 0.000092
DUN DEL MESCHIO (8,8,8,8,8 X 8) : 0.000061
RAYA DE LA BASSE DOROGNE (8 X 7) : 0.000061
BERNA (8,8 X 8) : 0.000031
RADENTIS DIDO (6,7,7,8,8 X 7,8) : 0.000031



Résultats concours

Lieu	Date	Type	Epreuve	N°	Juge	Conducteur	Qualif.	Pts
FR <u>ROFFIAC</u>	2021-07-11	TAN			BRUGEILLE D	MONTEL CH	TAN	0

Total des points Challenge Setter-anglais.fr 2021	0
Total des points	0
<i>Coefficients : solo x1, couple x2 / GT x1, GN x2, GS (bécasse, bécassine) x2, GS montagne x3, Printemps x2, Grande Quête x4</i>	

Note : les données ne sont pas garanties. Elles ont été entrées par les membres sans garantie d'exactitude.