

FISCHER DELLO ZEOLO

2006-05-20 (M) LOI LO06111115

Couleur : TRICOLORE

[fiche affixe](#)

Père
BIG JIM
 2000-12-01 (M)
 LOI LO0188207
 (CH GQ, Ch. Int. Lav., Camp. Ripr., Ch. Ital. Lav.)
 - liver



LERRY 1997-02-14 (M) LOI
 ST555862 (Ch GQ, Ch IT) - bluebelton



RADENTIS TANGA 1998-09-15 (F)
 LOI LO9958147 - lemon



ARNO 1988-04-17 (M) LOI ST374735
 (Ch. Int. Lav., Camp. Ripr., Ch. Ital. Lav.) -
 lemon



PICENUM UNGA 1990-10-02 (F) LOI
 ST430406 (CH GQ) - liver



RADENTIS SBRANCO 1991-07-01
 (M) LOI ST448908 (CH IB, Ch. Int. Lav.) -
 lemon

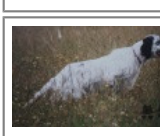


BESSY 1995-02-10 (F) LOI ST515746
 - lemon

CRISMANI ATOS
 1980-02-01 (M) LOI
 ST208763 (Ch IT) -
 liver



SWING DELLA VECCHIA IRLANDA
 1984-08-01 (F) LOI ST295020 (Ch L) -
 lemon



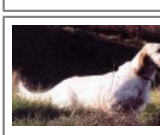
BIBO 1987-04-08
 (M) LOI ST356972
 (Ch. Int. Lav., Ch. Ital.
 Lav., CH GQ) -
 bluebelton

STAR 1987-01-16 (F) LOI ST346344 -
 bluebelton



RADENTIS BORG
 1987-04-30 (M) LOI
 ST350267 (Ch. Int.
 Lav., CH GQ, Ch. Ital.
 Lav., Camp. Ripr.) -
 lemon

RADENTIS OLA 1984-09-30 (F) LOI
 ST298174 - lemon



ARNO 1988-04-17
 (M) LOI ST374735
 (Ch. Int. Lav., Camp.
 Ripr., Ch. Ital. Lav.) -
 lemon

ROYAL VIENNA 1986-03-30 (F) LOI
 ST324982 - lemon

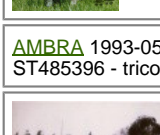


URS DEL DIANELLA
 1991-10-15 (M) LOI
 ST451794 (Ch. Ital.
 Lav., Ch. Int. Lav.) -
 bluebelton



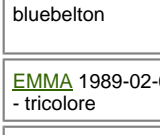
ILA DEL DIANELLA
 1992-07-01 (F) LOI
 ST463596 (Ch. Ital.
 Lav.) - lemon

EGON BUZAHAZI
 1988-12-20 (M) LOI
 ST412406 (Ch. Ital. Lav.) -
 tricolore



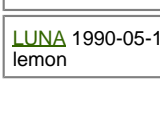
AMBRA 1993-05-21 (F) LOI
 ST485396 - tricolore

ROYAL MOZART
 1987-03-04 (M) LOI
 ST350880 (CH GQ,
 Ch. Int. Lav., Ch. Ital.
 Lav., Camp. Ripr.) -
 bluebelton



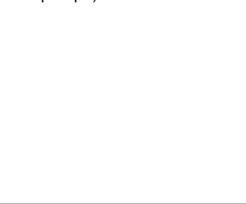
EMMA 1989-02-04 (F) LOI ST385629
 - tricolore

DASH DELLA BAITA 1992-03-03 (M)
 LOI ST460802 - bluebelton



LUNA 1990-05-16 (F) LOI ST426566 -
 lemon

OLAF 1999-02-10 (M) LOI
 LO99111884 (Ch. Int. Lav., Ch. Ital. Lav.,
 Camp. Ripr.) - tricolore



LOLA DELLA MONTEVECCHIA
 2000-09-08 (F) LOI LO0145491 -
 tricolore



GIAN DEL DIANELLA 1996-02-28 (M)
 LOI ST541319 (CH GQ, Camp. Ripr.) -
 bluebelton



ALISSA 1995-06-07 (F) LOI
 ST526027 -
 TRIC.-MASCH.SIMM.NERA
 C/FOCAT.AR



CLEMENT DEL PIZZO STELLA
 1993-06-18 (M) LOI ST483303 (Ch. Ital.
 Lav., CH GQ) - bluebelton



HUNGA DELLA MONTEVECCHIA
 1998-05-20 (F) LOI LO98142382 -
 tricolore

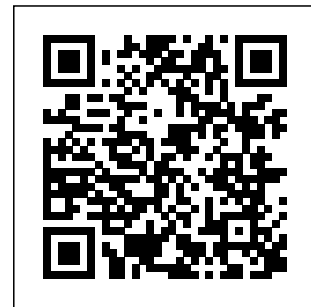
Eleveur : MONTI GIUSEPPE / Propriétaire : MONTI GIUSEPPE

Tatouage : 6MTU8

Estimation des points au pédigrée : 34

Taux de consanguinité (estimation) : 1.6 %

DECOR LOT (6,6,6,6 X 5,7) : 0.004883
DUN DEL MESCHIQ (6,7,7,7,8,8,8,8,8 X 7,7,7,7,8,8) : 0.004395
EMO DELLA TRAPPOLA (5 X 5,7) : 0.002518
MORGAN (6,7,7 X 6) : 0.000977
TANGA (6,7,7 X 6) : 0.000977
FLAY DEL DIANELLA (5 X 7) : 0.000488
ARTU (7,8 X 8,8,8,8) : 0.000366
BRUNA DELLA MARCIOLA (6,7,7,8,8 X 7) : 0.000366
CRISMANI OLAF (7,8,8,8,8 X 8,8,8,8,8) : 0.000305
LEM DEL RESEGONE (7 X 7,8,8) : 0.000244
FRANCINI'S LINDA (7 X 8,8) : 0.000122
VIMON REVEL (8,8 X 8) : 0.000061
DAGA (8 X 7) : 0.000061
DERK (7 X 8) : 0.000061
DICH DI VAL D'IDICE (8 X 8) : 0.000031
DAMA 17 (8 X 8) : 0.000031
LINDO 3 DICEREA (8 X 8) : 0.000031



Note : les données ne sont pas garanties. Elles ont été entrées par les membres sans garantie d'exactitude.