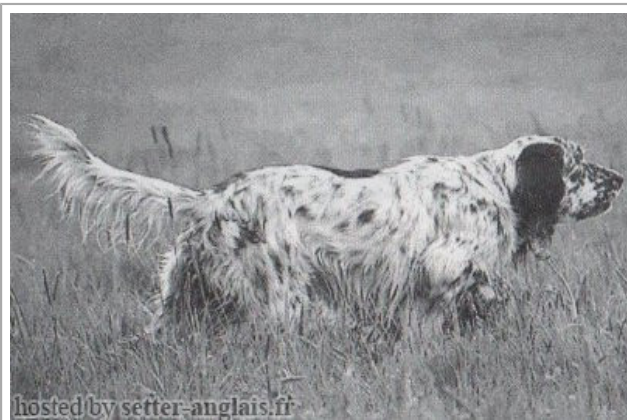









DERRYK

1991-05-10 (M) LOI ST443351

Color: BIANCO NERO (bluebelton) / Qualifications: Ch GQ



<p>Father</p> <p>ROVAL MOZART 1987-03-04 (M) LOI ST350880 (CH GQ, Ch. Int. Lav., Ch. Ital. Lav., Camp. Ripr.) - bluebelton</p> 	<p>DECOR LOT 1978-09-22 (M) LOI ST143178 (Ch IT, Ch T, CH GQ) - bluebelton</p> 	<p>IRGO 1976-01-24 (M) LOI ST102949 (Ch. Int. Lav.) - lemon</p> 	<p>CLEM 1971-03-06 (M) LOI ST35681 (CH L, CH INT)</p> 
	<p>ROVAL FLY 1982-01-27 (F) LOI ST241785 (Ch GQ) - tricolore</p>	<p>BONA DEL MESCHIO 1975-11-22 (F) LOI ST095120 - bluebelton</p>	<p>DUN DEL MESCHIO 1972-04-08 (M) LOI ST046247 (Ch GQ - Ch reproducteur)</p> <p>- bluebelton</p>
<p>Mother</p> <p>LILLA 1986-06-15 (F) LOI ST339376 (Ch GQ) - bluebelton</p>	<p>DECOR LOT 1978-09-22 (M) LOI ST143178 (Ch IT, Ch T, CH GQ) - bluebelton</p> 	<p>MUR 1976-01-15 (M) LOI ST097222 (CHIT INTCH) - tricolore</p>	<p>DUN DEL MESCHIO 1972-04-08 (M) LOI ST046247 (Ch GQ - Ch reproducteur)</p> <p>- bluebelton</p>
	<p>SINMA 1984-03-26 (F) LOI ST297620 - lemon</p>	<p>ORA DEL MESCHIO 1977-12-28 (F) LOI ST126058 (CHIT INTCH) - tricolore</p>	<p>DAGA (F) LOI ST32048</p>
<p>IRGO 1976-01-24 (M) LOI ST102949 (Ch. Int. Lav.) - lemon</p> 	<p>BONA DEL MESCHIO 1975-11-22 (F) LOI ST095120 - bluebelton</p>	<p>IRGO 1976-01-24 (M) LOI ST102949 (Ch. Int. Lav.) - lemon</p> 	<p>CLEM 1971-03-06 (M) LOI ST35681 (CH L, CH INT)</p>
	<p>FALCO 1981-05-27 (M) LOI ST234911 - lemon</p>	<p>GIPSI 1980-07-15 (F) LOI ST219851 - lemon</p>	<p>DUN DEL MESCHIO 1972-04-08 (M) LOI ST046247 (Ch GQ - Ch reproducteur)</p> <p>- bluebelton</p>
<p>BAIRO 1975-05-03 (M) LOI ST091722</p>	<p>ASSIA DELLA MARCIOLA 1976-04-24 (F) LOI ST100601 - lemon</p>	<p>BIRSA 1971-05-29 (F) LOI ST038617</p>	<p>DIVA 1973-06-07 (F) LOI ST060117</p>
<p>MACI 1974-03-01 (M) LOI ST071075</p>	<p>URSULA DEL SOLE 1978-03-26 (F) LOI ST131909 - lemon</p>		

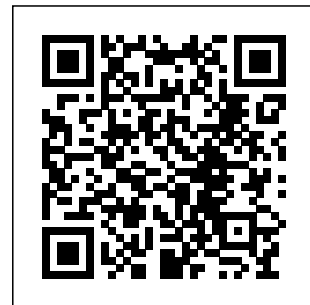
Breeder: Ragazzini Ambrogio / Owner: Allevamento Del Tirso

Tatoo: 1B0540

Points in pedigree: 70

Estimated coefficient of inbreeding: 14.6 %

DECOR LOT (2 X 2) : 0.125732
DUN DEL MESCIO (4,4 X 4) : 0.007935
TRUEBA DELLA FAGIANA (6,6 X 6,6,6,7) : 0.002441
GONZAGHENSIS MUR (7,8,8,8,8 X 8,8,8,8,8,8,8,8) : 0.001221
ZAR 11 (6 X 6,6,7,7,8) : 0.001099
FRANZ DEL CANSIGLIO (5,6 X 6) : 0.000977
VAVA DEL TIDONE (6,7,8,8,8 X 6,8,8,8) : 0.000916
BRILL 2 DEL ROVERE (6,6,7,7 X 6,7) : 0.000610
MILVA 5 (6,6 X 6) : 0.000488
SARA 6 (6 X 6,7,7) : 0.000488
ALMAR DARMA (6,6,6 X 6) : 0.000488
BRICK DEL ROVERE (6,7,8 X 7,8) : 0.000458
QUARIS DI BELLOSGUARDO (7,7,7 X 7,7,7,8) : 0.000427
CRISMANI BILL (7,7,7,8,8,8,8 X 7,8,8) : 0.000397
CRISMANI BLACK (7,7,8,8,8,8 X 7,8,8) : 0.000336
RAF2 (7,8,8,8,8,8,8 X 8,8,8) : 0.000244
SONIA DEL ROVERE (7,8,8,8,8,8,8 X 8,8,8) : 0.000244
SHARBERRY NICK (6,7 X 6) : 0.000244
ALA 10 (7,7,8 X 7,7,8,8,8) : 0.000183
ORSONE DELL ORSONE (7,7,7 X 7,8) : 0.000183
TELL68 (8,8,8,8,8,8,8 X 8,8) : 0.000153
TICINENSIS CAVALIER D'ARPINO (7,7,8 X 7,7) : 0.000122
TICINENSIS HAPPY (7,8,8 X 8,8) : 0.000122
QUES DELLE MORENE (8,8,8,8,8,8 X 8,8) : 0.000092
TICINENSIS GEA (7,8 X 8) : 0.000061
DUCH 3 (8,8 X 8,8) : 0.000061
DIANA DELLA VILLA (8,8 X 8,8,8,8) : 0.000061
SHARBERRY FERN (7,8 X 7) : 0.000061
CRISMANI CALI (7 X 7,8) : 0.000061
CRISMANI BUCK (7 X 8) : 0.000061
DIK 13 (7,8 X 7,8,8,8) : 0.000061
ASTRA 5 (8,8 X 8) : 0.000031



Note: data are entered by members. There is no guarantee about accuracy of data.