







**FRANCINI'S GOGA**

1995-05-29 (M) LOF 136151/20222

Color: Noi.PBl.Env (bluebelton) / Qualifications: TR CHA CHP CHITF CH.T. VOF/FTA VOF/FTP / Dyspl.: B  
Kennel

hosted by setter-anglais.fr

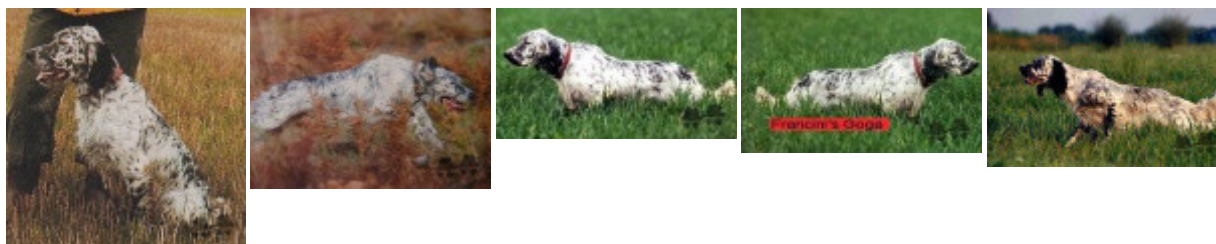
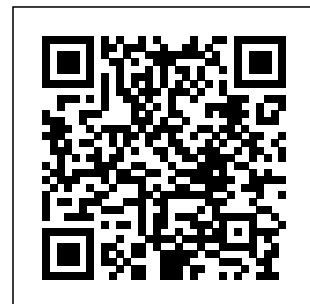
<p>Father <b>FRANCINI'S JEFF</b> 1993-04-03 (M) LOI ST479317 (Ch. Ital. Lav., Ch. Int. Lav., Camp. Ripr.) - bluebelton</p> 	<p><b>FRANCINI'S LUCA</b> 1989-07-08 (M) LOI ST404483 (Ch. Ital. Lav., CH GQ, Ch. Int. Lav., Camp. Ripr.) - tricolore</p> 	<p><b>DEM</b> 1980-08-30 (M) LOI ST222808 (CH INT L RIP) - BIANCO-MACCHIA NERA OCCHIO DX-PI</p> 	<p><b>DUN DEL MESCHIO</b> 1972-04-08 (M) LOI ST046247 (Ch GQ - Ch reproducteur) - bluebelton</p>
<p><b>FRANCINI'S SALLY</b> 1986-01-19 (F) LOI ST325298 (Camp. Ripr.) - bluebelton</p>	<p><b>FRANCINI'S LORI</b> 1980-07-21 (F) LOI ST219787 - BIANCO NERA PUNTEGGIATA</p>	<p><b>LEDA</b> 1976-04-13 (F) LOF 50709/05251 - tricolore</p>	<p><b>MAGIS GIM</b> 1973-07-20 (M) LOI ST063170 (Ch L Ch INT) - n.d.</p>
<p><b>FRANCINI'S RAS</b> 1982-10-26 (M) LOI ST254436 (Camp. Ripr.) - bluebelton</p> 	<p><b>FRANCINI'S VANITY</b> 1976-08-01 (F) LOI ST104417 - bluebelton</p>	<p><b>DIK DELLA MARCIOLA</b> 1978-07-05 (M) LOI ST141105 (Ch L Ch IT) - bluebelton</p>	<p><b>FRANCINI'S VANITY</b> 1976-08-01 (F) LOI ST104417 - bluebelton</p>
<p><b>RUDY DEL DIANELLA</b> 1981-09-16 (F) LOI ST239145 - bluebelton</p>	<p><b>LEM DEL RESEGONE</b> 1972-01-02 (M) LOI ST054069 (Camp. Ripr.) - bluebelton</p>	<p><b>MERA DELL ORSONE</b> 1974-08-31 (F) LOI ST076086 (Ch Int.) - bluebelton</p>	

<p>Mother <u>FRANCINI'S PEGGY</u> 1992-07-12 (F) LOI ST472715 (Ch. Ital. Lav.) - tricolore</p>	<p><u>FRANCINI'S LUCA</u> 1989-07-08 (M) LOI ST404483 (Ch. Ital. Lav., CH GQ, Ch. Int. Lav., Camp. Ripr.) - tricolore</p> 	<p><u>DEM</u> 1980-08-30 (M) LOI ST222808 (CH INT L RIP) - BIANCO-MACCHIA NERA OCCHIO DX-PI</p> 	<p><u>DUN DEL MESCCHIO</u> 1972-04-08 (M) LOI ST046247 (Ch GQ - Ch reproducteur)</p> <p>- bluebelton</p>	
	<p><u>FRANCINI'S LORI</u> 1980-07-21 (F) LOI ST219787 - BIANCO NERA PUNTEGGIATA</p>	<p><u>MAGIS GIM</u> 1973-07-20 (M) LOI ST063170 (Ch L Ch INT) - n.d.</p>	<p><u>LEDA</u> 1976-04-13 (F) LOF 50709/05251 - tricolore</p>	<p><u>FRANCINI'S VANITY</u> 1976-08-01 (F) LOI ST104417 - bluebelton</p>
	<p><u>FRANCINI'S SAIL</u> 1985-08-13 (F) LOI ST316342 (Ch. Int. Lav., Ch. Ital. Lav., Camp. Ripr.) - tricolore</p> 	<p><u>DEM</u> 1980-08-30 (M) LOI ST222808 (CH INT L RIP) - BIANCO-MACCHIA NERA OCCHIO DX-PI</p> 	<p><u>DUN DEL MESCCHIO</u> 1972-04-08 (M) LOI ST046247 (Ch GQ - Ch reproducteur)</p> <p>- bluebelton</p>	<p><u>LEDA</u> 1976-04-13 (F) LOF 50709/05251 - tricolore</p>
		<p><u>QUERCIA DEI BOIARDI</u> 1980-11-06 (F) LOI ST222873 - bluebelton</p>	<p><u>EDO DI CEREA</u> 1977-05-02 (M) LOI ST116713 - lemon</p>	<p><u>MIURA DEL BOIARDI</u> 1976-04-02 (F) LOI ST096215 - BIANCO NERA</p>

Owner: DERUSSEAU Jean Luc  
Champion du Monde Gibier Tiré 2000,  
Vice-Champion du Monde Gibier Tiré 1998  
LOI 527947, 136151/20222. Expo CACS, EXCCTNE.  
Vainqueur du PSS 1997.  
Vainqueur de l'Open de France Printemps,  
Vainqueur de l'Open de France de GT.  
Cotation (FR): 5  
Tatoo: UNJ890  
Points in pedigree: 60

## Estimated coefficient of inbreeding: 17.5 %

FRANCINI'S LUCA (2 X 2) : 0.125427  
DEM (3 X 3,3) : 0.031311  
FRANCINI'S VANITY (4,4 X 4) : 0.007935  
LEM DEL RESEGONE (4,5,5 X 5) : 0.004028  
BRILL 2 DEL ROVERE (6,7,7 X 6,6,8,8) : 0.001465  
TRUEBA DELLA FAGIANA (6,6 X 6,6) : 0.000977  
BRICK DEL ROVERE (8,8,8,8,8,8 X 8,8,8,8,8,8) : 0.000916  
VAVA DEL TIDONE (7,7,7,8,8,8,8 X 7,8,8,8) : 0.000610  
CORA DEL VOLO (6,7,7 X 7,8,8) : 0.000488  
ORSONE DELL ORSONE (7,7,8,8 X 7,7) : 0.000488  
BONA DEL ROVERE (7,7,8,8 X 7,7) : 0.000488  
SHARBERRY NICK (6 X 8,8) : 0.000244  
CRISMANI BLACK (7,8,8 X 7,7) : 0.000244  
GONZAGHENSIS MUR (8,8,8,8 X 8,8,8,8) : 0.000183  
NILO DI BELLOSGUARDO (7,8,8 X 8,8) : 0.000122  
ZAR 11 (7 X 8) : 0.000061  
KISS 18 (8,8 X 8,8) : 0.000061  
SARA 6 (7 X 8) : 0.000061  
SONIA DEL ROVERE (8,8,8 X 8,8,8,8) : 0.000061  
RAF2 (8,8,8 X 8,8,8,8) : 0.000061  
BRUSCO DI SAN FAUSTINO (8,8 X 8,8,8) : 0.000031  
ALTNAHARRA BROOM (8,8 X 8,8,8) : 0.000031



Note: data are entered by members. There is no guarantee about accuracy of data.