

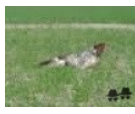



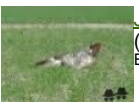


DARIO DE VILLAMEDINA llamada BART

2012-10-13 (M) LOE 2135577
 Couleur : Blanco y naranja (lemon)
[fiche affixe](#)



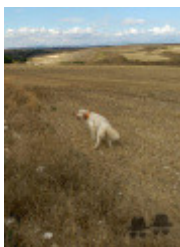
Père TER DE PENTE (M) LOE 1993309	ASTOR (M) LOE 1496197	RADENTIS BILLO 2001-10-25 (M) LOE 1376724 (Ch GQ) - lemon 	RADENTIS SBRANCO 1991-07-01 (M) LOI ST448908 (CH IB, Ch. Int. Lav.) - lemon
		SETA DE CUMBRAOS dit ZETA 2004-10-26 (F) LOE 1428687 (Tr GB E.05) - lemon	RADENTIS ALA 1994-03-15 (F) LOI ST496649 (Ch T) - lemon
		RADENTIS D'ESPANA 1995-05-22 (M) LOE 990823 (Ch IT B, Ch GQ) - lemon 	RADENTIS D'ESPANA 1995-05-22 (M) LOE 990823 (Ch IT B, Ch GQ) - lemon
	YINA DE BOSENDE (F) LOE 1436572	NACA DE LOS DESMONTES 1997-08-28 (F) LOE 869145 (Tr CP, Tr PR, CHCp, CHIT) 	RADENTIS SBRANCO 1991-07-01 (M) LOI ST448908 (CH IB, Ch. Int. Lav.) - lemon
			RADENTIS ALA 1994-03-15 (F) LOI ST496649 (Ch T) - lemon
			IHOR DE PLAYABARRI (M) LOE 601128
			LAIKA DE GOURIELLE 1995-01-03 (F) LOE 820116 - bluebelton

<p>Mère <u>LAI</u> (F) LOE 1576234</p>	<p><u>NASH DU POULIT SAN DANIS</u> 1997-01-01 (M) LOF 136341/25088 (TR CHP CH.T. CHITF CHP CHT. CHIT. CH.T. CHITF / CHBE.B CHES.B) - bluebelton</p> 	<p><u>JORDY DE CODORNIS</u> 1994-01-05 (M) LOF 121290/18225 (TR) - bluebelton</p>	 <p><u>COOL DE CODORNIS</u> 1987-08-02 (M) LOF 92622/12503 (CH IT, CH GQ) - bluebelton</p>	
	<p><u>VACA DE PLAYABARRI</u> (F) LOE 1464881</p>	<p><u>GLORIA DE KERFEUIL</u> 1991-07-14 (F) LOF 110051/19079 (TR) - lemon</p>	 <p><u>FLEUR DE L'ECHO DE LA FORET</u> 1990-06-09 (F) LOF 104597/17690 - lemon</p>	 <p><u>ARNO</u> 1988-04-17 (M) LOI ST374735 (Ch. Int. Lav., Camp. Ripr., Ch. Ital. Lav.) - lemon</p>
	<p><u>LIDER DE PLAYABARRI dit LEADER</u> 1996-11-01 (M) LOE 856545 (Ch A, Ch T, Tr GQ) - lemon</p> 	<p><u>ALTESSE DE KERFEUIL</u> 1985-06-07 (F) LOF 83307/12781 (Ch CS) - lemon</p>	 <p><u>PALU</u> 1993-09-04 (M) LOE 662202 (Tr GQ) - lemon</p>	<p><u>TESSA DELLA BASSANA</u> 1995-02-08 (F) LOI ST515986 - tricolore</p>
	<p><u>DUNA</u> (F) LOE 0990207</p>	<p><u>JEN DE PLAYABARRI</u> (M) LOE 681139 (Tr Cp E 01. Ch Pr F 01. Tr Pr F 0)</p> 	<p><u>HYDRA llamada PINTA</u> (F) LOE 0668175</p>	

Sang italien (estimation) : 82 %
Estimation des points au pédigrée : 18

Taux de consanguinité (estimation) : 1.4 %

RADENTIS GIAN (6,6,6,6,7,7,8,8,8,8 X 5) : 0.005859
DECOR LOT (7,7,7,7,7,7,7,8,8,8,8,8 X 6,8,8) : 0.002808
MARK DELLA BASSANA (6,6,8 X 6) : 0.001236
DUN DEL MESCHIQ (8,8,8,8,8 X 6,7,8,8,8,8) : 0.001190
LOPEZ DELLA BASSANA (8,8,8,8,8 X 8,8,8,8,8) : 0.000580
DEM (7 X 5) : 0.000488
FALCO (7,7 X 6) : 0.000488
CORA DEL VALLE DE MENA (6 X 6) : 0.000488
CIBA DELLA BASSANA (7,7 X 7,7) : 0.000244
BASSINO (7 X 6) : 0.000244
VINA PAGASARRI (7,7 X 7) : 0.000122
CURA DELLA BASSANA (8 X 6) : 0.000122
ARO (8 X 6) : 0.000122
GIP DELLA BASSANA (7 X 7) : 0.000122
DIC DELLA BASSANA (7 X 7) : 0.000122
REDO DELLA BASSANA (8 X 8,8,8) : 0.000061



Note : les données ne sont pas garanties. Elles ont été entrées par les membres sans garantie d'exactitude.

