

RULLO DELLA VECCHIA IRLANDA

2005-06-10 (M) LOI LO05108741
Couleur : BIANCO ARANCIO (lemon)
[fiche affixe](#)



Père
RADENTIS ZUM
2002-07-08 (M)
LOI LO02161851
(Camp. Tr. (Ch GQ), Camp. Int. Lav., Camp.
Ital. Lav.)
- lemon



FIERO 1996-08-10 (M) LOI ST551356
(CHGQ, Ch ITF, Ch IB, Ch ITT) - lemon



GIBELTARIK BLONDIE 2000-12-11
(F) LOI LO02122551 (CHIT.T) - lemon



ARNO 1988-04-17 (M) LOI ST374735
(Ch. Int. Lav., Camp. Ripr., Ch. Ital. Lav.) -
lemon



INDIRA 1990-06-01 (F) LOI ST423625
(Ch IT) - lemon



DODGE DEL TIRSO 1998-02-14 (M)
LOI LO9942918 (Ch IT IT-T, CHIB, Camp.
Tr. (Ch GQ)) - bluebelton



RADENTIS ERICA 1995-05-25 (F)
LOI ST531494 ((CH(I)B)) - lemon



CRISMANI ATOS
1980-02-01 (M) LOI
ST208763 (Ch IT) -
liver



SWING DELLA VECCHIA IRLANDA
1984-08-01 (F) LOI ST295020 (Ch L) -
lemon



RADENTIS GIAN
1983-01-02 (M) LOI
ST258470 (Ch. Ital.
Lav., Ch. Int. Lav., Camp.
Ripr.) - lemon

BETTY 1988-03-03 (F) LOI ST364831
(Ch T Ital) - lemon








DERRYK
1991-05-10 (M) LOI
ST443351 (Ch GQ) -
bluebelton

ASTRA DEL TIRSO 1992-10-01 (F)
LOI ST454300 - lemon



**RADENTIS
SBRANCO**
1991-07-01 (M) LOI
ST448908 (Ch IB, Ch.
Int. Lav.) - lemon

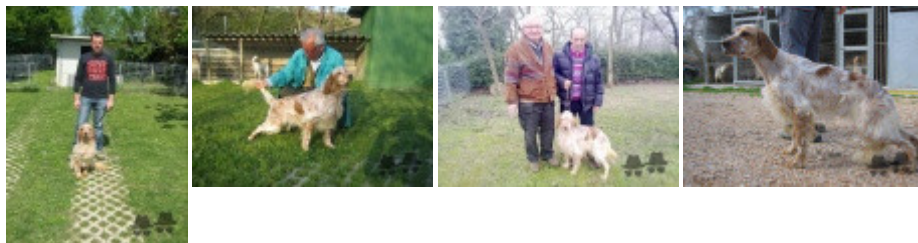
ODE DEL SOLE 1993-09-10 (F) LOI
ST490145 - liver

<p>Mère GIBELTARIK BLONDIE 2000-12-11 (F) LOI LO02122551 (CHIT.T) - lemon</p> 	<p>DODGE DEL TIRSO 1998-02-14 (M) LOI LO9942918 (Ch IT IT-T, CHIB, Camp. Tr. (Ch GQ)) - bluebelton</p> 	<p>DERRYK 1991-05-10 (M) LOI ST443351 (Ch GQ) - bluebelton</p> 	<p>ROVAL MOZART 1987-03-04 (M) LOI ST350880 (Ch GQ, Ch. Int. Lav., Ch. Ital. Lav., Camp. Ripr.) - bluebelton</p>
<p>RADENTIS ERICA 1995-05-25 (F) LOI ST531494 ((CH(I)B)) - lemon</p> 	<p>ASTRA DEL TIRSO 1992-10-01 (F) LOI ST454300 - lemon</p>	<p>LILLA 1986-06-15 (F) LOI ST339376 (Ch GQ) - bluebelton</p> <p>AMBO DEL VARO 1987-10-04 (M) LOI ST360725 (Ch. Int. Lav.) - lemon</p>	<p>URSULA DEL PRATESI 1986-03-16 (F) LOI ST331214 - lemon</p>
<p>RADENTIS SBRANCO 1991-07-01 (M) LOI ST448908 (CH IB, Ch. Int. Lav.) - lemon</p> 	<p>RADENTIS BORG 1987-04-30 (M) LOI ST350267 (Ch. Int. Lav., CH GQ, Ch. Ital. Lav., Camp. Ripr.) - lemon</p>	<p>RADENTIS OLA 1984-09-30 (F) LOI ST298174 - lemon</p>	<p>AMBO DEL VARO 1987-10-04 (M) LOI ST360725 (Ch. Int. Lav.) - lemon</p>
<p>ODE DEL SOLE 1993-09-10 (F) LOI ST490145 - liver</p>	<p>UANA DEL SOLE 1987-01-05 (F) LOI ST342352 - liver</p>		

Propriétaire : Fabbri Orlando
Tatouage : 5VIR17
Puce : 380098100412116
Estimation des points au pédigrée : 53

Taux de consanguinité (estimation) : 30.5 %

GIBELTARIK BLONDIE (2 X 1) : 0.271851
RADENTIS GIAN (4,6,6,6 X 5,5,5) : 0.012451
DECOR LOT (5,6,6,6,7,7,7,7 X 5,5,6,6,6,6,6) : 0.010254
DUN DEL MESCHIO (6,7,7,7,7,7,8,8,8,8,8,8,8 X 6,7,7,7,7,7,7,8,8,8,8,8,8) : 0.007538
ATOS DELLE TORRICELLE (6,6 X 5) : 0.000977
BERNA (6,7,7 X 6,6) : 0.000977
CRISMANI OLAF (7,8,8,8,8 X 7,8,8,8,8,8,8,8,8,8,8) : 0.000549
ALMAR LEDA (7,8,8,8,8 X 7,8,8,8,8,8,8,8,8,8) : 0.000183
DAGA (7,8 X 7,8,8,8,8) : 0.000183
VIMON REVEL (8 X 8,8,8) : 0.000031
BRILL 2 DEL ROVERE (8,8 X 8) : 0.000031
TRUEBA DELLA FAGIANA (8 X 8,8) : 0.000031
DICH DI VAL D'IDICE (8 X 8,8,8) : 0.000031
DAMA 17 (8 X 8,8,8) : 0.000031



Note : les données ne sont pas garanties. Elles ont été entrées par les membres sans garantie d'exactitude.