

DECOR EVANS

2017-03-15 (M) LOI LO1761220
Couleur : BIANCO NERO (bluebelton)
[fiche affixe](#)



Père
RADENTIS PARIGI
2010-05-12 (M)
LOI LO10129500
(Camp. Riproduttore.)
- bluebelton



RADENTIS CRISS 2000-06-30 (M)
LOI LO0128798 - lemon



Radentis CRISS - 5 Valais

LERRY 1997-02-14 (M) LOI
ST555862 (Ch GQ, Ch IT) - bluebelton



RADENTIS BELLA 1997-01-13 (F)
LOI ST559827 (IT Ch GQ) - lemon



ARNO 1988-04-17
(M) LOI ST374735
(Ch. Int. Lav., Camp.
Ripr., Ch. Ital. Lav.) -
lemon



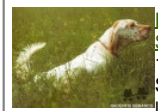
PICENUM UNGA
1990-10-02 (F) LOI
ST430406 (CH GQ) -
liver



**RADENTIS
SBRANCO**
1991-07-01 (M) LOI
ST448908 (CH IB, Ch.
Int. Lav.) - lemon



ODE DEL SOLE 1993-09-10 (F) LOI
ST490145 - liver



**RADENTIS
SBRANCO**
1991-07-01 (M) LOI
ST448908 (CH IB, Ch.
Int. Lav.) - lemon

RADENTIS BIANCA 2004-02-10 (F)
LOI LO0477926 - lemon

RADENTIS NOMAR 1998-03-22 (M)
LOI LO98133353 ((CHGQ CHITF /
CHIT.B)) - liver



**KELLI DELLA
MARIKA** 1995-08-06
(F) LOI ST530204 (Ch.
Ital. Lav.) - bluebelton

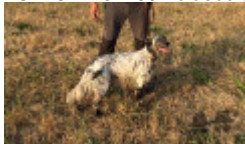









RADENTIS DIVA 1999-01-11 (F) LOI
LO99121035 - bluebelton

**RADENTIS
SBRANCO**
1991-07-01 (M) LOI
ST448908 (CH IB, Ch.
Int. Lav.) - lemon



BIRBA 1997-05-29 (F) LOI
LO9836576 - tricolore

Mère DECOR CASIA 2013-08-25 (F) LOI LO13151383 - bluebelton	DERO DEL ZAGNIS 2011-09-26 (M) LOI LO11154460 - bluebelton 	BECKHAM 2002-06-16 (M) LOI LO02143991 (Camp. Tr. (Ch GQ) Camp. Ital. Lav. Camp. Int. Lav.) - tricolore 	ASTON DEL ZAGNIS 1998-05-10 (M) LOI LO9938501 - bluebelton 
	DELTA 2007-01-05 (F) LOI LO0771533 - bluebelton	EDER 2006-01-15 (F) LOI LO06106800 - bluebelton	ISABELLA 1998-02-08 (F) LOI LO98121266 - tricolore
	MIRO 2003-01-15 (M) LOI LO0345158 (Camp. Tr. (Ch GQ)) - bluebelton 	ALAZIENSIS RAMBO 1999-11-01 (M) LOI LO0060896 (Ch W0F/CH, IT T, ITF, Camp. Tr. (Ch GQ), CH(ES)T, CH(GB)T) - lemon 	UMBLANA DEL CAVALDROSSA 2000-06-01 (F) LOI LO0336882 - bluebelton 
	ASIA DI VAL PANARO 2002-06-12 (F) LOI LO02133534 (Ch T, Camp. Tr. (Ch GQ)) - bluebelton 	ALAZIENSIS RAMBO 1999-11-01 (M) LOI LO0060896 (Ch W0F/CH, IT T, ITF, Camp. Tr. (Ch GQ), CH(ES)T, CH(GB)T) - lemon 	GILDA DELLA TORRE ANTICA 1997-07-01 (F) LOI LO99144678 - bluebelton

Eleveur : NOBILE OLIVIANO / Propriétaire : ZEKANOVIC JOSKO
Puce : 380260043039760
Estimation des points au pédigrée : 26

Taux de consanguinité (estimation) : 1.5 %

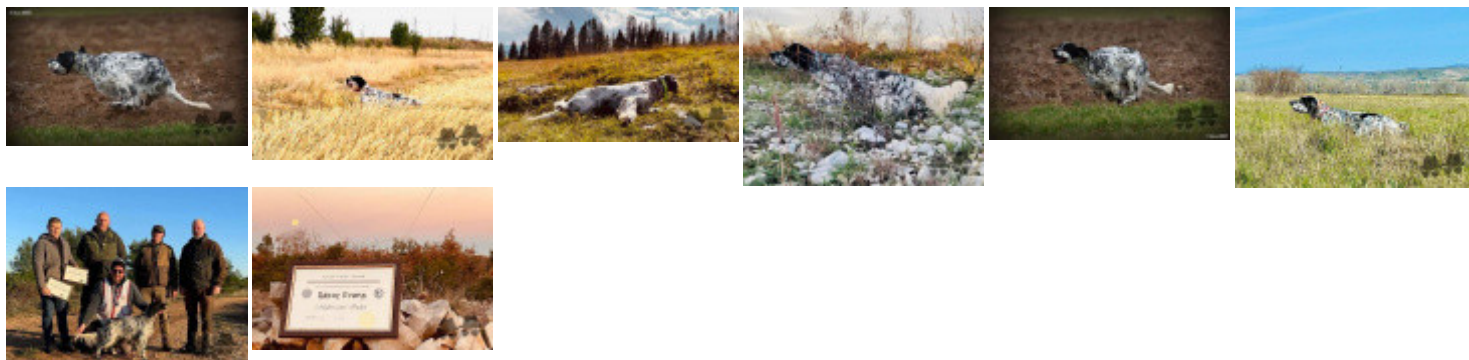
DECOR LOT (7,7,7,7,7,7,7,7,7,7,8,8,8 X 7,7,7,7,8,8,8) : 0.008698
ROVAL MOZART (7,7,7 X 6,7,7,8,8,8) : 0.002014
EMO DELLA TRAPPOLA (6 X 7,7,8,8,8) : 0.000854
DUN DEL MESCHIO (7,8,8,8,8,8,8,8,8 X 8,8) : 0.000610
RADENTIS GIAN (6,6,6,6,6 X 8) : 0.000610
FLAY DEL DIANELLA (6 X 7,7,8) : 0.000610
FRANCINI'S LUCA (6,6,8 X 7) : 0.000549
DEM (7,7 X 7,7,8) : 0.000488
DERK (8 X 8,8) : 0.000061
GIP DELLA BASSANA (8 X 8,8) : 0.000061
MUR (8 X 8) : 0.000031
LEM DEL RESEGONE (8 X 8) : 0.000031



Résultats concours

Lieu	Date	Type	Epreuve	N° Juge	Conducteur	Qualif.	Pts
RS NIS	2020-12-04	Grande Quête	couple	3	MISLJENOVIC SORMAZ TOSOVIC	BARAGHINI	CACT 96
Total des points Challenge Setter-anglais.fr 2020							96
RS NIS Ouvert	2021-03-19	Printemps	couple	1	Marini / Milikovic	Nicoletti	CACT 48
Total des points Challenge Setter-anglais.fr 2021							48
Total des points							144

Coefficients : solo x1, couple x2 / GT x1, GN x2, GS (bécasse, bécassine) x2, GS montagne x3, Printemps x2, Grande Quête x4



Note : les données ne sont pas garanties. Elles ont été entrées par les membres sans garantie d'exactitude.