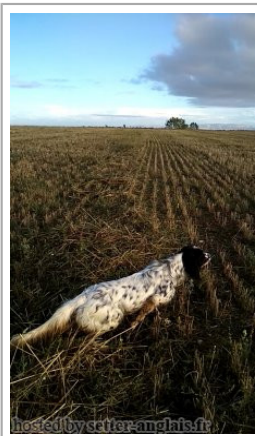


OSPA

2018-05-06 (M) LOE 2471788



Père
VLAD DI VAL DI CHIANA
 2015-07-01 (M)
 LOI LO15138170
 - bluebelton



PICASSO 2007-07-02 (M) LOI
 LO0864657 (Camp. Soc., CH GQ, Camp.
 Ripr., Ch. Int. Lav.) - bluebelton



KAPO' 2003-11-10 (M) LOI
 LO0439835 (Ch IT GQ) - bluebelton



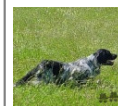
ASIA 2003-07-08 (F) LOI
 LO03125315 - bluebelton



VEGA 2005-11-14 (M) LOI
 LO0669697 (Ch GQ) - lemon



ZAIRA DI VAL DI CHIANA 2008-03-20
 (F) LOI LO0926101 - bluebelton



NERO 1997-03-29 (M)
 LOI LO9817889 (Ch T, Ch
 GQ) - bluebelton

KYBA 1998-01-01 (F) LOI
 LO98118951 - lemon



RADENTIS NOMAR
 1998-03-22 (M) LOI
 LO98133353 ((CHGQ CHITF /
 CHIT.B)) - liver

ALA 2001-04-30 (F) LOI LO01153556
 - bluebelton




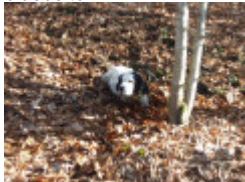



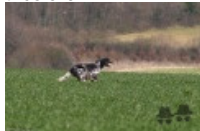




MARTIANISIUM LUTER
 2001-05-05 (M) LOI
 LO01138037 (CH GQ (Camp.
 Tr.)) - bluebelton

MARTIANISIUM FRINA 2002-01-22
 (F) LOI LO0247253 (Camp. Ripr.) -
 bluebelton

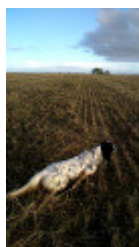


KAPO' 2003-11-10
 (M) LOI LO0439835
 (Ch IT GQ) - bluebelton

SARA 2001-06-03 (F) LOI
 LO01155872 - tricolore

<p>Mère</p> <p><u>EDUNXE DE TRASLOSMONTES dit LAR</u></p> <p>2016-03-08 (F)</p> <p>LOE 2317622</p> <p>- bluebelton</p> 	<p><u>GALIANO DE GANEKOGORTA</u></p> <p>2013-06-18 (M) LOE 00005 - bluebelton</p> 	<p><u>CALAR DEL SOLE</u> 2004-09-22 (M)</p> <p>LOF 196226/31557 (CHITF) - liver</p> 	<p><u>RAIANO DARK</u></p> <p>2001-01-19 (M) LOI LO0187665 (Camp. Tr. (Ch GQ)) - liver</p> 
	<p><u>ZONA llamada TRASLOSMONTES</u></p> <p>2013-09-15 (F) LOE 2161213 - bluebelton</p> 	<p><u>ARENA DEL SOLE</u> 2011-07-17 (F)</p> <p>LOI LO11133093 - bluebelton</p>	<p><u>MIRO</u> 2006-03-03 (M) LOI LO0678097 (CH P, CH IT, TR GQ) - tricolore</p> 
		<p><u>DENDABERRI KINKA</u> (F) LOE 1859487</p> 	<p><u>ORIO</u> 2002-05-14 (M) LOI LO02116390 (Camp. Tr. (Ch GQ)) - bluebelton</p> 
			<p><u>LILLA</u> 2003-05-20 (F) LOI LO0430935 - lemon</p>
			<p><u>TODAY</u> 2001-05-07 (M) LOI LO01146212 (Camp. Tr. (Ch GQ)) - bluebelton</p> 
			<p><u>ERNA</u> 2002-04-05 (F) LOI LO0286307 - bluebelton</p>
			<p><u>PALAZIENSIS RAMBO</u></p> <p>1999-11-01 (M) LOI LO0060896 (Ch WOF/CH, IT T, ITF, Camp. Tr. (Ch GQ), CH(ES)T, CH(GB)T) - lemon</p> 
			<p><u>GISTREDO FINCA</u> (F) LOE 1732327</p>

Sang italien (estimation) : 98 %
 Estimation des points au pédigrée : 17



Note : les données ne sont pas garanties. Elles ont été entrées par les membres sans garantie d'exactitude.